

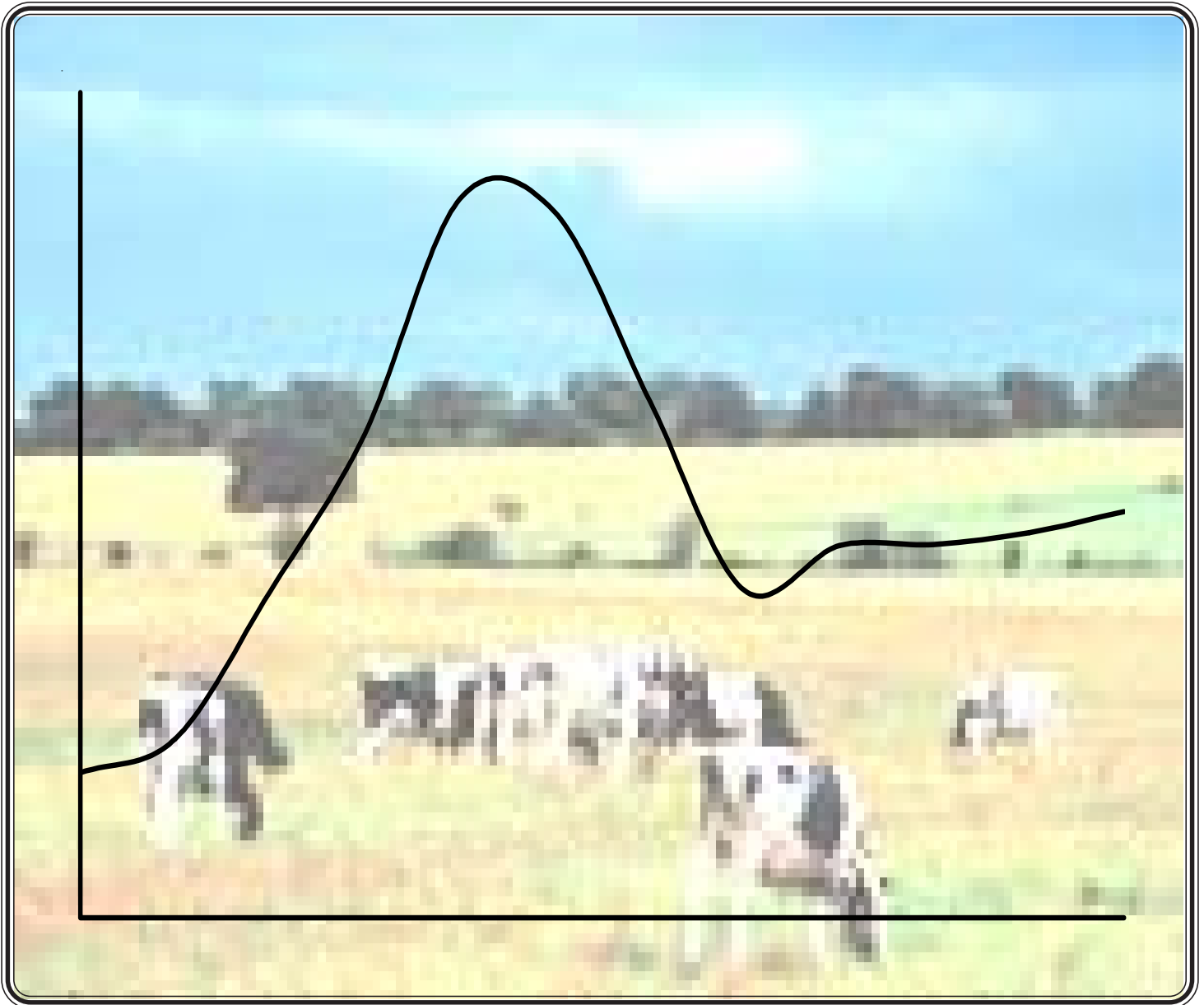
The Market Administrator's Annual Statistical Bulletin

Northeast Milk Marketing Area
Federal Order No. 1

2004

Erik F. Rasmussen, Market Administrator

VOLUME 5



Albany:
One Columbia Circle
Albany, NY 12203-6379
Tel.: (518) 452-4410
Fax: (518) 464-6468
e-mail: MAAlbany@fedmilk1.com

Boston:
89 South Street, Boston, MA 02211-2671
Mailing Address:
P.O. Box 51478
Boston, MA 02205-1478
Tel.: (617) 737-7199 — Fax: (617) 737-8002
e-mail: MABoston@fedmilk1.com
website: www.fmmone.com

Alexandria:
P.O. Box 25828
Alexandria, VA 22313-5828
Tel.: (703) 549-7000
Fax: (703) 549-7003
e-mail: MAAlexandria@fedmilk1.com

Contents

	Page
Summary	1
Plant Classification Information, 2004	29
Northeast Marketing Area Pool Handler Locations	34
Northeast Marketing Area Pool Handler Locations Index	35
Cooperatives Marketing in the Northeast as of December 31, 2003	39
<i>Bulletin</i> Highlights	52
Administrative Fund	54

Tables

1. Class I Prices and Advanced Pricing Factors at <i>Suffolk County, MA (Boston)</i>	2
2. Class II Prices	3
3. Class III Prices	4
4. Class IV Prices	5
5. Producer Prices at <i>Suffolk County, MA (Boston)</i>	6
6. Average Component Tests of Producer Receipts	8
7. Annual Weighted Average Price for Pooled Producer Milk	9
8. Weighted Monthly Average NASS Prices	10
9. Receipts of Milk from Producers by State	11
10. Number of Producers by State	12
11. Daily Average Output of Producer Milk per Farm by State	13
12. Average Butterfat Tests of Milk Received from Producers by State	14
13. Average Protein Tests of Milk Received from Producers by State	15
14. Average Other Solids Tests of Milk Received from Producers by State	16
15. Number of Farms by Size Categories, May and December 2004	17
16. Receipts of Fluid Milk Products and Cream at Pool Plants	18
17. Receipts from Producers by Class and Plant Location Differential	19
18. Receipts from Producers by Class	21
19. Percent of Receipts from Producers by Class	21
20. Utilization of Fluid Milk Products and Cream at Pool Plants	22
21. Class I Route Sales Inside the Northeast Order by Nonpool Handlers	23
22. Fluid Milk Products Utilized as Class I Milk in the Marketing Area at Pool Plants	24
23. Class II Use of Fluid Milk Products and Cream at Pool Plants	25
24. Class III Use of Fluid Milk Products and Cream at Pool Plants	26
25. Class IV Use of Fluid Milk Products and Cream at Pool Plants	27
26. Minimum Price Class Use and Total Utilization at Pool Plants	27
27. Number of Handlers	28
28. Number of Pool Plants	28
29. Producer Receipts by State and County	40

(Continued on following page)

Contents *(continued)*

Figures

	Page
1. Class I Prices	2
2. Class II Prices	3
3. Class III Prices	4
4. Class IV Prices	5
5. Statistical Uniform Prices	6
6. Prices for Components	7
7. Average Component Tests	8
8. Weighted Monthly Average NASS Prices	10
9. Receipts of Milk from Producers by State	11
10. Average Proportion of Producers by State	12
11. Daily Average Output per Farm, Top Five Milk Contributing States	13
12. Percentage of Farms by Size Categories, May and December 2004	17
13. Receipts of Milk from Producers	18
14. Plant Location Differentials Map	20

Photo Courtesy of the USDA.

Summary

This bulletin provides information about the operation of the Northeast Order during 2004 through a series of tables and charts. The *Bulletin* Highlights section summarizes important events that impacted the dairy industry in 2004. Also included are lists of handlers and cooperatives operating under the Order.

Producer Milk Receipts Lower

During 2004, the volume of milk received from producers shipping to handlers regulated under the Northeast Order totaled 22.7 billion pounds, a decrease of 5.7 percent from last year and the lowest volume pooled since the Order's inception in 2000. Production during 2004 in the Northeast Order's main contributing states (New York, Pennsylvania, and Vermont) was down nearly every month when compared to the previous year. Overall, these states reported a combined 5.8 percent decline in milk production in 2004, compared to the previous year. In addition, nearly 700 million pounds of milk normally associated with the Northeast Order were depooled during the months of April, May, and June due to disadvantageous price relationships. This was the first time depooling of producers has ever occurred under the Northeast Order due to the Class III price exceeding the uniform price.

The average number of producers pooled by handlers regulated under the Order equaled 15,039 in 2004, a decline of 6.7 percent. The average was somewhat skewed by the depooling mentioned above. The year finished with 735 fewer producers than at the end of 2003, which was down 743 from the previous year. Daily deliveries per producer (DDP) averaged 4,121 pounds, an increase of 0.8 percent from 2003.

Class Utilization Changes

Class I utilization averaged 47.2 percent in 2004, an increase of 2.6 percentage points from the previous year. The total volume of milk used in Class I actually decreased a slight 0.1 percent, but the utilization percentage increased because of a smaller volume of producer milk receipts.

Class II usage decreased 0.5 percent, but due to a smaller pooled volume, resulted in a utilization increase of 1.0 percentage point. Class III volume declined 22.0 percent, with a corresponding utilization drop of 4.9 percentage points. This decrease was largely the result of depooling. Milk used in Class IV grew 7.5 percent on a volume basis and 1.2 percentage points in utilization.

Prices Higher

National milk production lagged behind the previous year during the first half of 2004. This tightness in milk was reflected in higher commodity prices for cheese and butter, which resulted in higher federal order prices. All class prices averaged considerably higher than in 2003.

The Class I price averaged \$18.23 per hundredweight for 2004, \$3.59 above 2003 and the highest average price since the Order's inception. The Class I price set a record

high in June with \$24.38 per hundredweight. In addition, the Class I prices in May and July were also above \$20.00 per hundredweight. The Class II price averaged \$13.86 per hundredweight, \$3.10 higher than in 2003. Class III prices followed a similar pattern as Class I with the increase coming a month sooner due to the method of calculation that allows for a more timely change. The Class III price averaged \$15.39 per hundredweight for 2004, \$3.97 above 2003 and the highest price since the Order began. In addition, the Class III price hit a record-setting \$20.58 per hundredweight in May. The Class IV price averaged \$13.20 per hundredweight, \$3.20 higher than in 2003. For all the months except February, the Class III price was the dominant mover of Class I prices.

Overall, the statistical uniform price (SUP) reported at Suffolk County, Massachusetts (Boston), averaged \$16.49 per hundredweight in 2004. This was up \$3.50 per hundredweight (27.0 percent) from the previous year. The SUP peaked at \$19.84 per hundredweight in May; the lowest price was \$13.58 in January. The producer price differential (PPD) averaged \$1.10 per hundredweight, 47 cents less than in 2003. During the months of April and May, the PPD was negative at all zones due to the significant rapid increases in dairy commodity values that caused inverted price relationships.

Milk Income Loss Contract (MILC) payments were paid from January through April, as these were the only months during 2004 when the Class I price was below the \$16.94 per hundredweight trigger price. Payments in fiscal year (FY) 2004 averaged 65 cents per hundredweight, compared to \$1.59 per hundredweight in FY 2003. The MILC program is scheduled to expire September 30, 2005.

Component Pricing

With commodity values for cheese and butter hitting new all-time highs, component prices used in paying producers also set record high levels during 2004. The average price paid per pound to producers for butterfat hit a record high \$2.5013 per pound in April and averaged an overall 69.5 percent higher in 2004. The per-pound annual average protein price rose 9.5 percent from the previous year and hit a record-setting \$3.7639 per pound in May. The annual average other solids price jumped 482.2 percent from 2003 and set a record in May at \$0.1444 per pound.

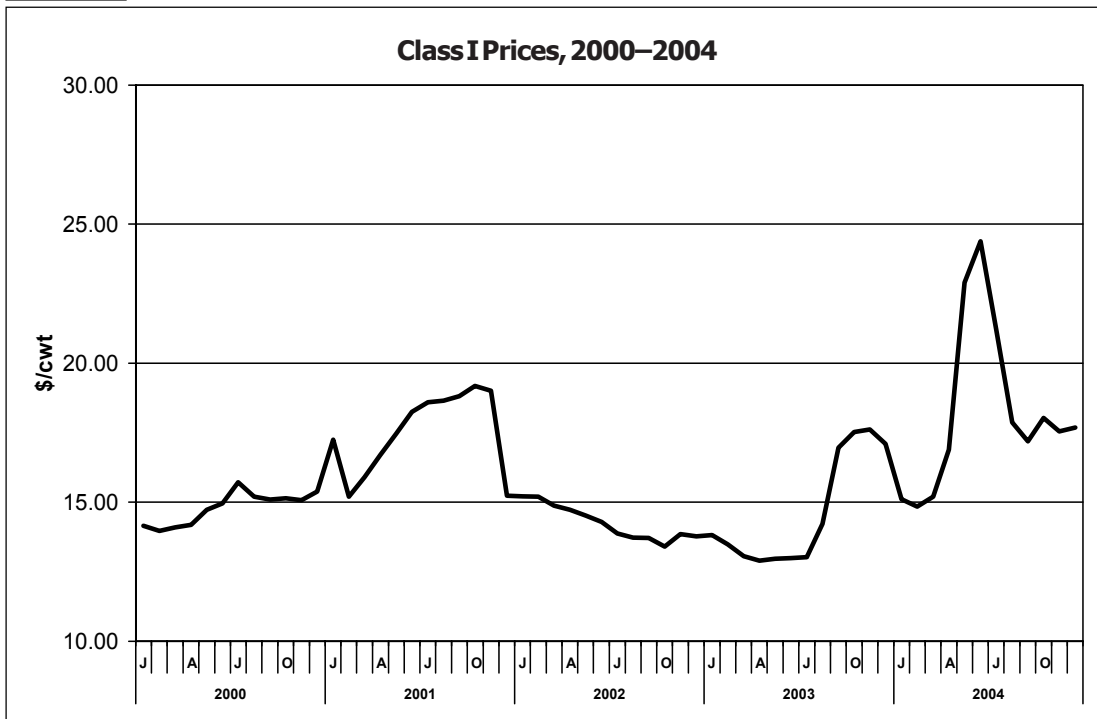
The annual average producer butterfat test averaged 3.67 percent in 2004, a decline of 4 percentage points. Tests were considerably lower during the first half of the year when compared to the same months in 2003. The average producer protein test averaged 3.04 percent, an increase of 3 percentage points, and set an Order No. 1 record high in November at 3.13 percent. The other solids test averaged 5.67 percent, 2 percentage points lower than in 2003.

1 Class I Prices and Advanced Pricing Factors at Suffolk County, MA (Boston), 2000-04

	Class I Price Mover				Class I Price		
	Advanced Pricing Factors						
	Butterfat \$/lb	Class III Skim	Class IV Skim \$/cwt	Base Skim Price	Skim \$/cwt	Butterfat \$/lb	3.5% Butterfat* \$/cwt
2000 Average	1.1730	5.96	7.72	7.72	10.97	1.2055	14.80
2001 Average	1.8892	6.59	7.63	7.93	11.18	1.9217	17.52
2002 Average	1.2123	6.57	6.92	7.01	10.26	1.2448	14.26
2003 Average	1.1937	7.26	6.04	7.47	10.72	1.2262	14.64
January	1.3283	7.46	5.94	7.46	10.71	1.3608	15.10
February	1.5044	6.55	5.93	6.55	9.80	1.5369	14.84
March	1.7675	5.68	5.96	5.96	9.21	1.8000	15.19
April	2.2525	5.64	5.96	5.96	9.21	2.2850	16.89
May	2.4437	11.50	6.04	11.50	14.75	2.4762	22.90
June	2.4580	12.98	6.21	12.98	16.23	2.4905	24.38
July	2.1088	10.95	6.33	10.95	14.20	2.1413	21.20
August	2.0952	7.55	6.37	7.55	10.80	2.1277	17.87
September	1.7890	7.96	6.41	7.96	11.21	1.8215	17.19
October	1.8715	8.53	6.44	8.53	11.78	1.9040	18.03
November	1.9288	7.81	6.44	7.81	11.06	1.9613	17.54
December	1.8834	8.12	6.37	8.12	11.37	1.9159	17.68
2004 Average	1.9526	8.39	6.20	8.44	11.69	1.9851	18.23

* Price does not include Processor Assessment or the Administrative Assessment.

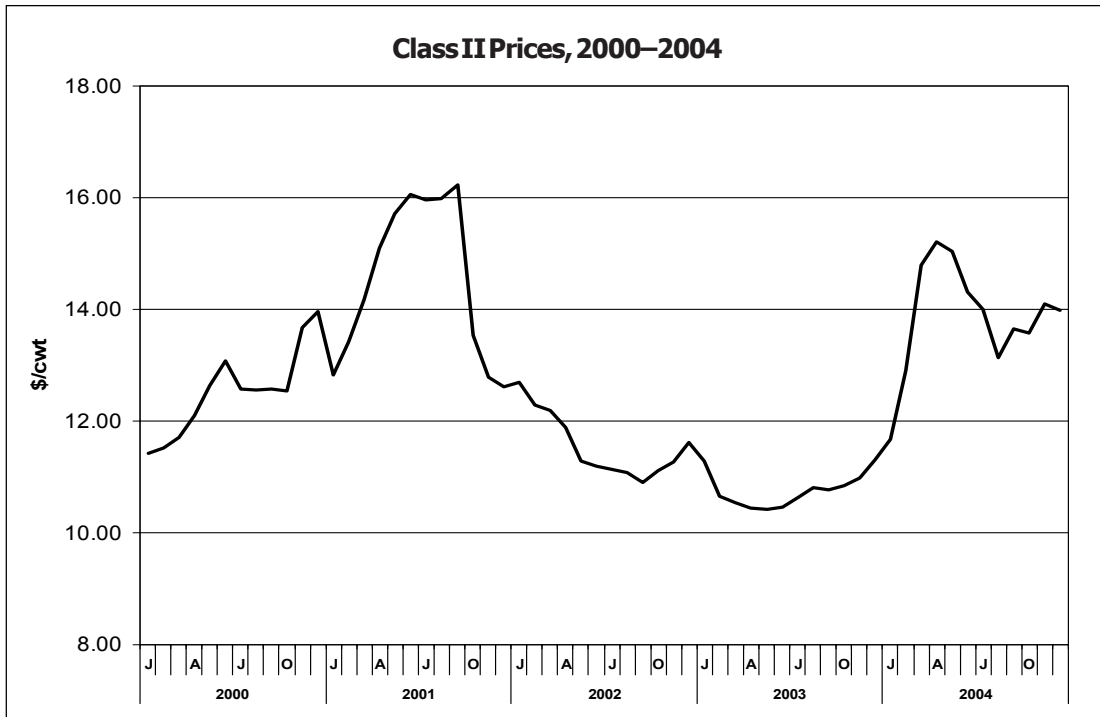
Figure 1



2 Class II Prices, 2000–2004

	Butterfat	Nonfat Solids	Skim	3.5% Butterfat
	\$/lb	\$/lb	\$/cwt	
2000 Average	1.2592	0.9353	8.42	12.53
2001 Average	1.8550	0.9259	8.33	14.53
2002 Average	1.1998	0.8467	7.62	11.55
2003 Average	1.2169	0.7489	6.74	10.76
January	1.5048	0.7378	6.64	11.67
February	1.8588	0.7367	6.63	12.90
March	2.3883	0.7400	6.66	14.79
April	2.5083	0.7400	6.66	15.21
May	2.4352	0.7489	6.74	15.03
June	2.1838	0.7678	6.91	14.31
July	2.0613	0.7811	7.03	14.00
August	1.8011	0.7856	7.07	13.13
September	1.9424	0.7900	7.11	13.66
October	1.9090	0.7933	7.14	13.57
November	2.0559	0.7933	7.14	14.09
December	2.0436	0.7856	7.07	13.98
2004 Average	2.0577	0.7667	6.90	13.86

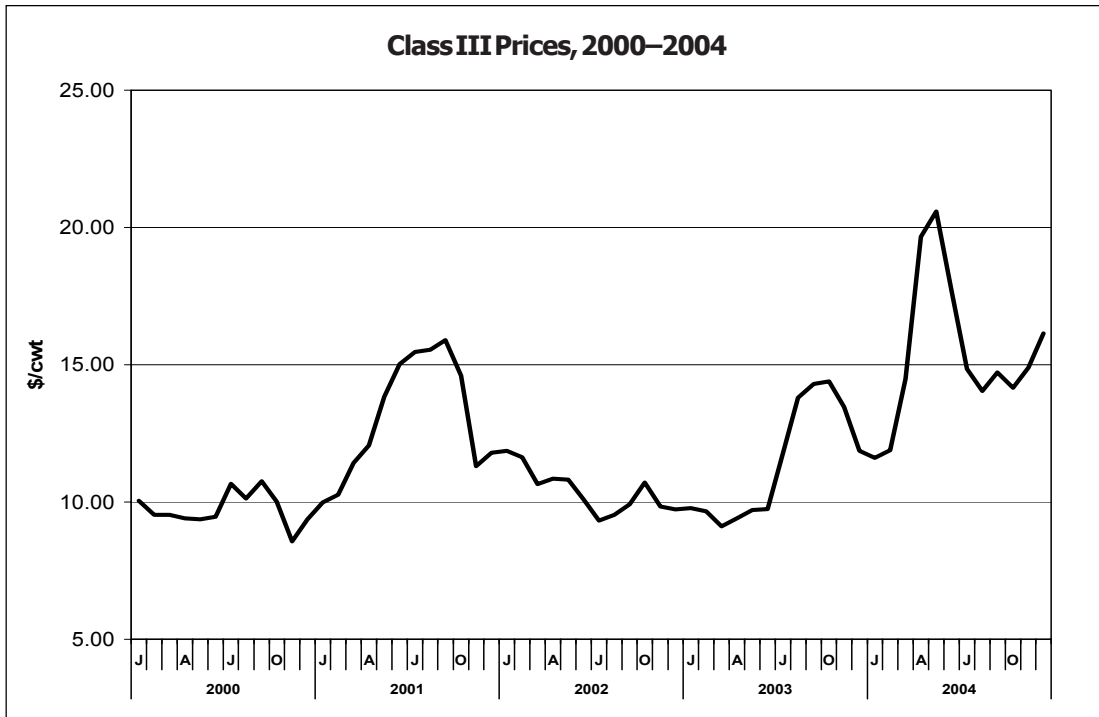
Figure 2



3 Class III Prices, 2000–2004

	Butterfat	Protein \$/lb	Other Solids	Skim	3.5% Butterfat \$/cwt
2000 Average	1.2522	1.6938	0.0509	5.55	9.74
2001 Average	1.8480	1.9613	0.1343	6.87	13.10
2002 Average	1.1928	1.9735	0.1754	6.47	10.42
2003 Average	1.2099	2.3770	0.0129	7.45	11.42
January	1.4978	2.0875	0.0217	6.60	11.61
February	1.8518	1.7911	0.0090	5.61	11.89
March	2.3813	2.0133	0.0234	6.38	14.49
April	2.5013	3.4465	0.1042	11.30	19.66
May	2.4282	3.7639	0.1444	12.52	20.58
June	2.1768	3.1086	0.1339	10.43	17.68
July	2.0543	2.3625	0.1048	7.94	14.85
August	1.7941	2.4663	0.0676	8.04	14.04
September	1.9354	2.5431	0.0589	8.23	14.72
October	1.9020	2.3814	0.0677	7.78	14.16
November	2.0489	2.4297	0.0800	8.00	14.89
December	2.0366	2.8486	0.0858	9.34	16.14
2004 Average	2.0507	2.6035	0.0751	8.51	15.39

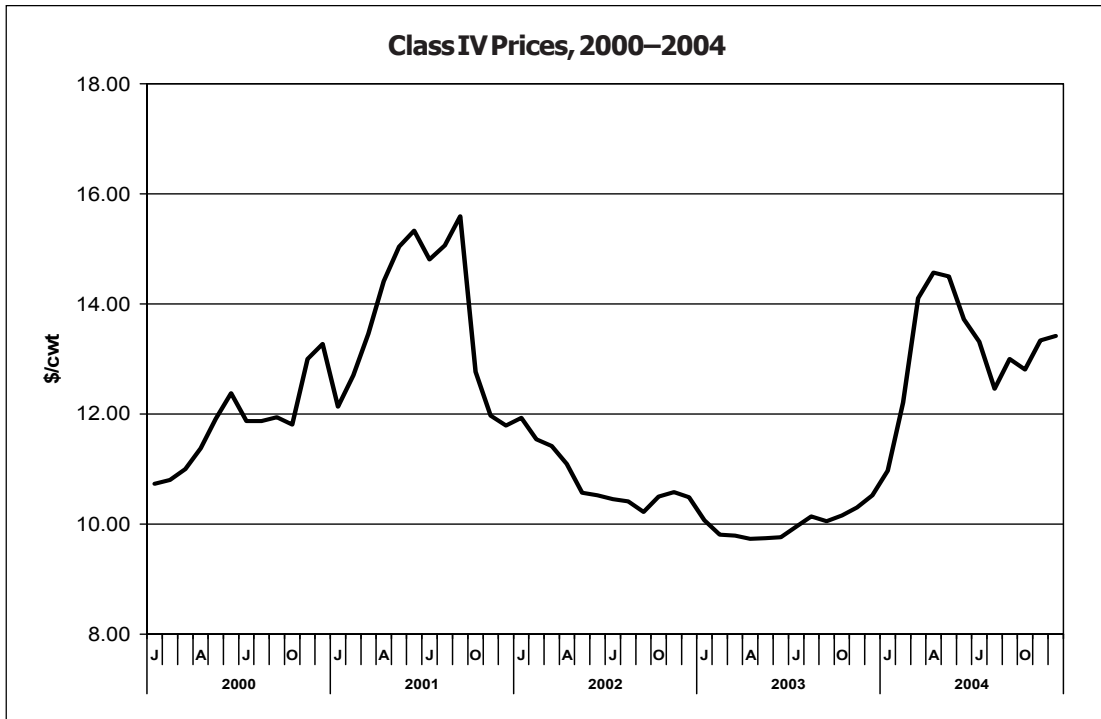
Figure 3



4 Class IV Prices, 2000–2004

	Butterfat	Nonfat Solids	Skim	3.5% Butterfat
	\$/lb		\$/cwt	
2000 Average	1.2522	0.8574	7.72	11.83
2001 Average	1.8480	0.8391	7.55	13.76
2002 Average	1.1928	0.7643	6.88	10.81
2003 Average	1.2099	0.6640	5.98	10.00
January	1.4978	0.6595	5.94	10.97
February	1.8518	0.6597	5.94	12.21
March	2.3813	0.6634	5.97	14.10
April	2.5013	0.6703	6.03	14.57
May	2.4282	0.6913	6.22	14.50
June	2.1768	0.7026	6.32	13.72
July	2.0543	0.7042	6.34	13.31
August	1.7941	0.7112	6.40	12.46
September	1.9354	0.7167	6.45	13.00
October	1.9020	0.7093	6.38	12.81
November	2.0489	0.7098	6.39	13.34
December	2.0366	0.7240	6.52	13.42
2004 Average	2.0507	0.6935	6.24	13.20

Figure 4



5 **Producer Prices at Suffolk County, MA (Boston), 2000–2004**

	Producer Price	Statistical	Butterfat	Protein	Other Solids
	Differential	Uniform Price*			
	\$/cwt			\$/lb	
2000 Average	3.30	13.04	1.2522	1.6938	0.0509
2001 Average	2.57	15.67	1.8480	1.9613	0.1343
2002 Average	2.22	12.64	1.1928	1.9735	0.0593
2003 Average	1.57	12.99	1.2099	2.3770	0.0129
January	1.97	13.58	1.4978	2.0875	0.0217
February	2.06	13.95	1.8518	1.7911	0.0090
March	1.07	15.56	2.3813	2.0133	0.0234
April	(2.38)	17.28	2.5013	3.4465	0.1042
May	(0.74)	19.84	2.4282	3.7639	0.1444
June	2.02	19.70	2.1768	3.1086	0.1339
July	2.79	17.64	2.0543	2.3625	0.1048
August	1.53	15.57	1.7941	2.4663	0.0676
September	1.34	16.06	1.9354	2.5431	0.0589
October	1.91	16.07	1.9020	2.3814	0.0677
November	1.31	16.20	2.0489	2.4297	0.0800
December	0.29	16.43	2.0366	2.8486	0.0858
2004 Average	1.10	16.49	2.0507	2.6035	0.0751

* Reported at 3.5 percent butterfat, 2.99 percent protein, and 5.69 percent other solids.

Figure 5

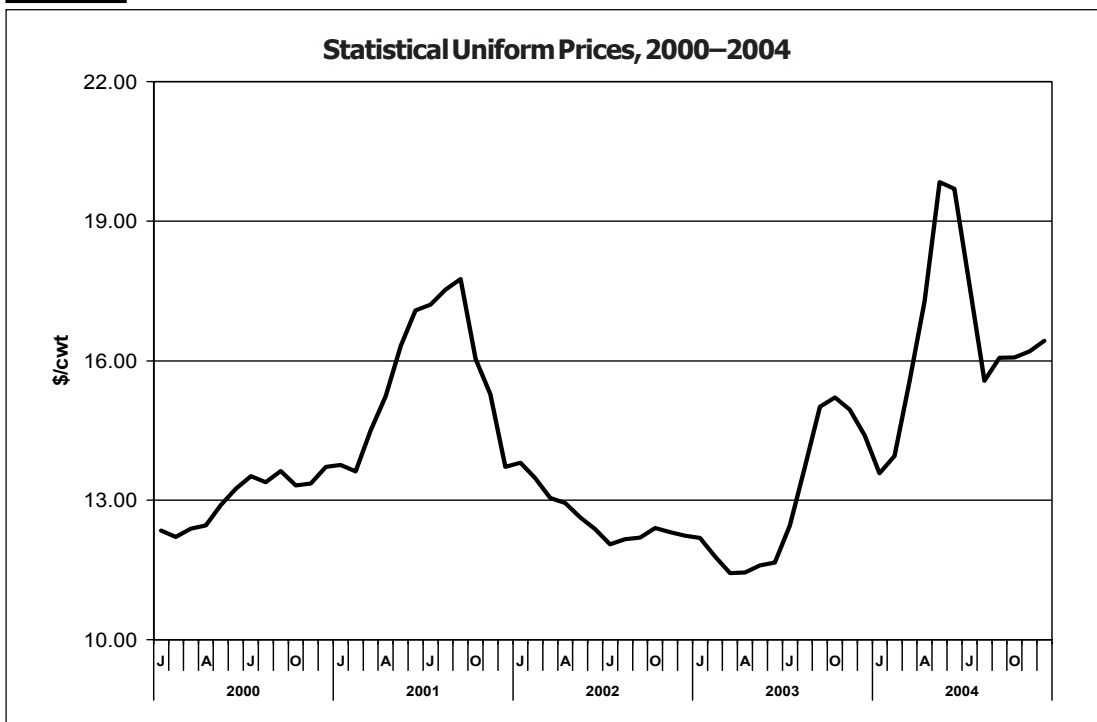
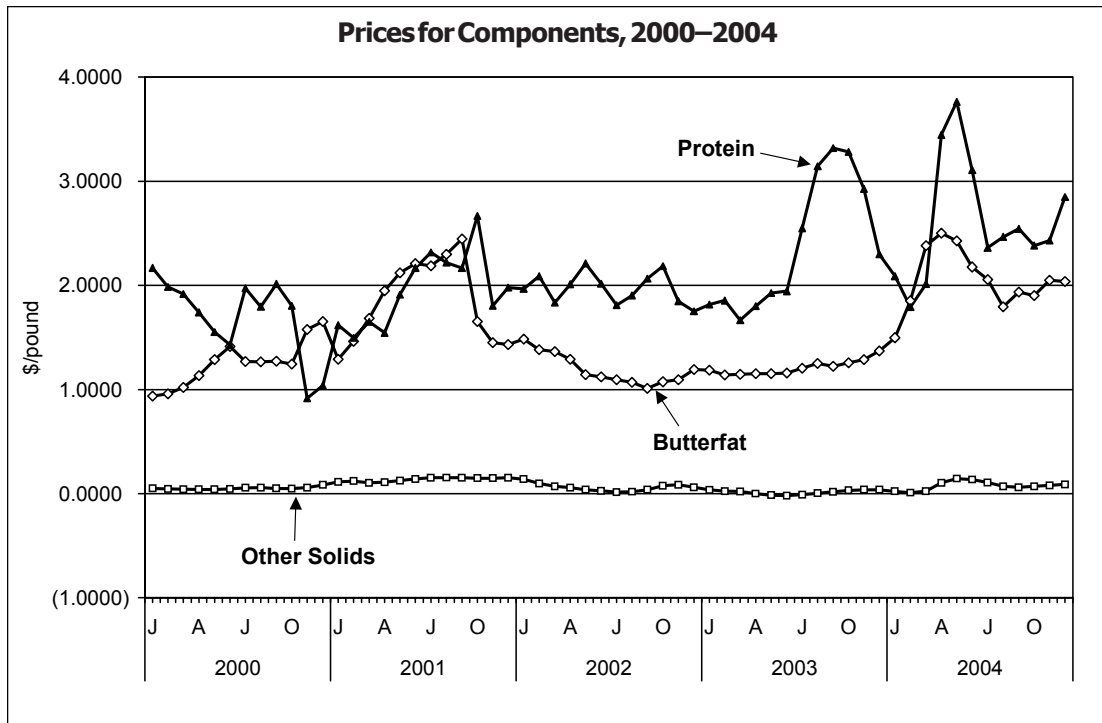


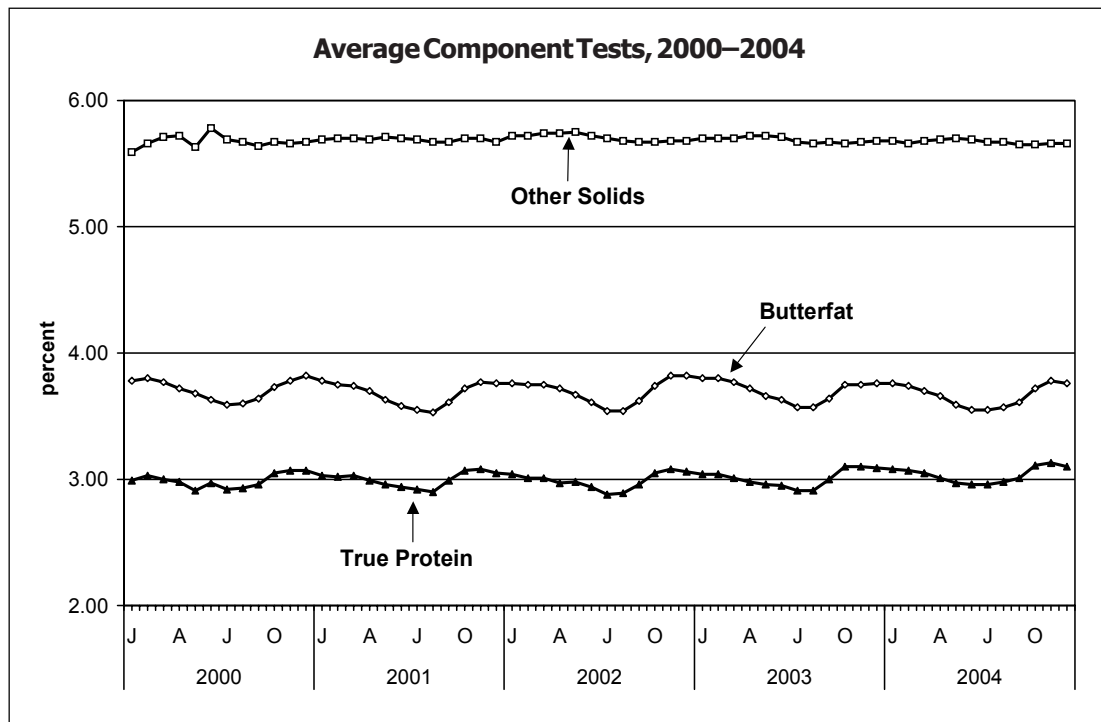
Figure 6



6 Average Component Tests of Producer Receipts, 2000–04

	Butterfat	True Protein percent	Other Solids
2000 Average	3.71	2.99	5.67
2001 Average	3.68	3.00	5.69
2002 Average	3.70	2.99	5.71
2003 Average	3.70	3.01	5.69
January	3.76	3.08	5.68
February	3.74	3.07	5.66
March	3.70	3.05	5.68
April	3.66	3.01	5.69
May	3.59	2.97	5.70
June	3.55	2.96	5.69
July	3.55	2.96	5.67
August	3.57	2.98	5.67
September	3.61	3.01	5.65
October	3.72	3.11	5.65
November	3.78	3.13	5.66
December	3.76	3.10	5.66
2004 Average	3.67	3.04	5.67

Figure 7



7

Annual Weighted Average Price for Pooled Producer Milk*, 2004

Computation of Annual Weighted Average Price of \$16.50

<u>Producer Milk</u>	<u>Percent</u>	<u>Pounds</u>	<u>Minimum Class Price per cwt**</u>
Class I	47.1	10,691,759,744	\$ 18.23
Class II	19.6	4,441,221,652	13.86
Class III	23.4	5,297,273,133	15.39
Class IV	9.9	2,239,696,020	13.20
Total Producer Milk	100.0	22,669,950,549	

Producer Price Differential	\$1.11 /cwt @ Suffolk County, MA (Boston)
Statistical Uniform Price	\$16.50 /cwt @ Suffolk County, MA (Boston)

Producer Pay Prices per pound**

Protein Price	\$2.6035
Butterfat Price	2.0507
Other Solids Price	0.0751
Nonfat Solids Price	0.6935

COMPUTATION OF PRODUCER PRICE DIFFERENTIAL

	<u>Product Pounds</u>	<u>Component Value</u>	<u>Total Value</u>
Class I— Skim	10,472,328,932	\$1,219,008,953.34	
Butterfat	219,430,812	433,476,332.03	
Less: Location Adjustment to Handlers		(33,566,704.32)	\$1,618,918,581.70
Class II— Butterfat	319,716,861	659,384,324.15	
Nonfat Solids	372,293,874	285,267,740.91	944,652,065.06
Class III— Butterfat	202,858,772	411,879,931.47	
Protein	160,949,804	403,409,197.57	
Other Solids	299,564,568	20,545,140.65	835,834,269.69
Class IV— Butterfat	88,827,249	183,991,877.00	
Nonfat Solids	194,143,767	134,489,506.07	318,481,383.07
Total Classified Value			\$3,717,886,299.52
Add: Overage—All Classes			1,362,505.66
Inventory Reclassification—All Classes			2,892,916.39
Other Source Receipts	917,183		27,637.00
Less: Producer Component Valuations			<u>(3,578,621,747.77)</u>
Subtotal			\$143,547,610.80
Add: Location Adjustment to Producers			107,025,346.15
One-half Unobligated Balance—Producer Settlement Fund			<u>10,581,263.92</u>
Total Pool Milk & Aggregate Value	22,670,867,732		261,154,220.87
Less: Producer Settlement Fund—Reserve			<u>(9,964,820.00)</u>
Producer Price Differential per cwt		\$1.11	\$251,189,400.87
Statistical Uniform Price per cwt		\$16.50	

* As reported at pool time at 3.5 percent butterfat, 2.99 percent protein, and 5.69 percent other solids.

** Simple average.

8 Weighted Monthly Average NASS Prices*, 2000–2004

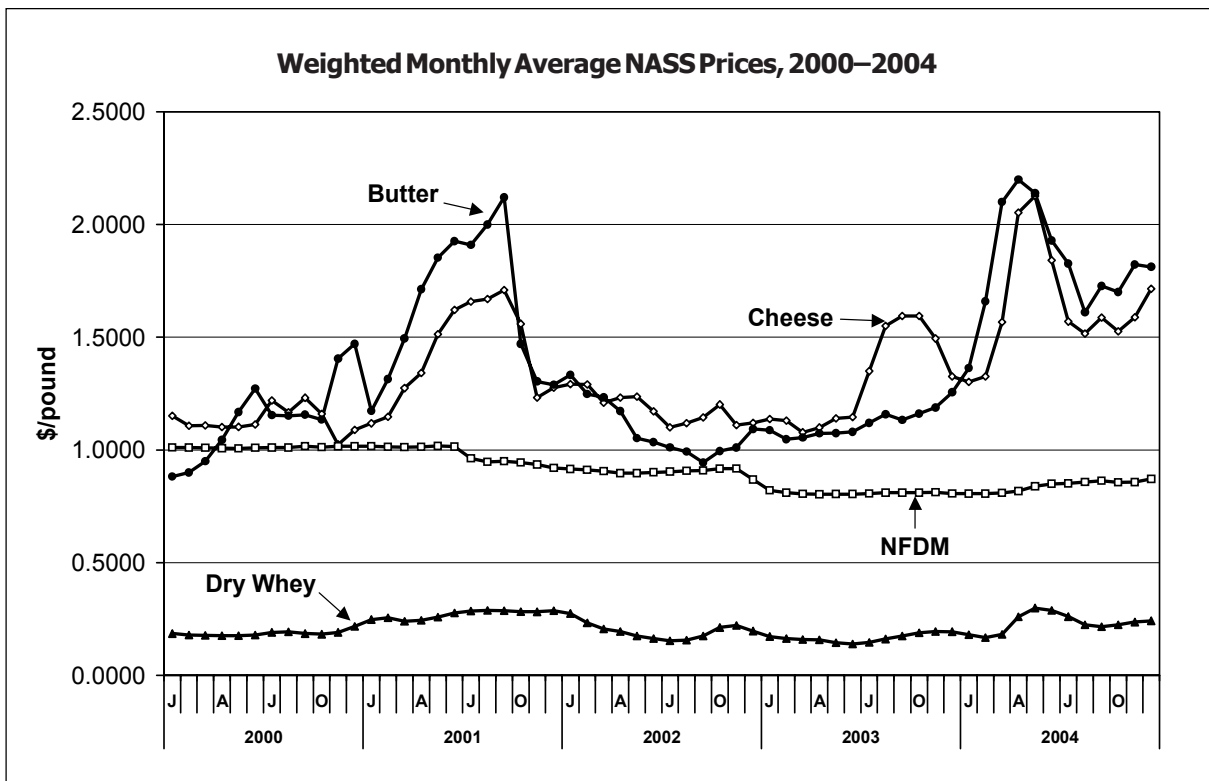
	Cheese					
	40-pound Blocks	Barrels**	Average***	Butter	NFDM	Dry Whey
	\$/lb					
2000 Average	1.1332	1.0985	1.1313	1.1408	1.0115	0.1863
2001 Average	1.4165	1.4039	1.4264	1.6304	0.9791	0.2700
2002 Average	1.1808	1.1575	1.1855	1.0931	0.9043	0.1974
2003 Average	1.2970	1.2771	1.3031	1.1194	0.8090	0.1667
January	1.3079	1.2683	1.3023	1.3632	0.8062	0.1801
February	1.3165	1.3042	1.3260	1.6582	0.8064	0.1677
March	1.5212	1.5768	1.5680	2.0994	0.8101	0.1817
April	2.0001	2.0596	2.0520	2.1994	0.8171	0.2602
May	2.1289	2.0948	2.1266	2.1385	0.8383	0.2992
June	1.8509	1.8031	1.8411	1.9290	0.8497	0.2890
July	1.5661	1.5424	1.5695	1.8269	0.8513	0.2607
August	1.4927	1.5085	1.5167	1.6101	0.8584	0.2246
September	1.5694	1.5690	1.5867	1.7278	0.8639	0.2162
October	1.5270	1.4944	1.5256	1.7000	0.8565	0.2247
November	1.5685	1.5750	1.5886	1.8224	0.8570	0.2367
December	1.7404	1.6629	1.7146	1.8122	0.8713	0.2423
2004 Average	1.6325	1.6216	1.6431	1.8239	0.8405	0.2319

* Reported by National Agricultural Statistics Service (NASS).

** Reported at 38% moisture.

*** Includes the \$0.03 adjustment to the barrel price per pricing provisions.

Figure 8



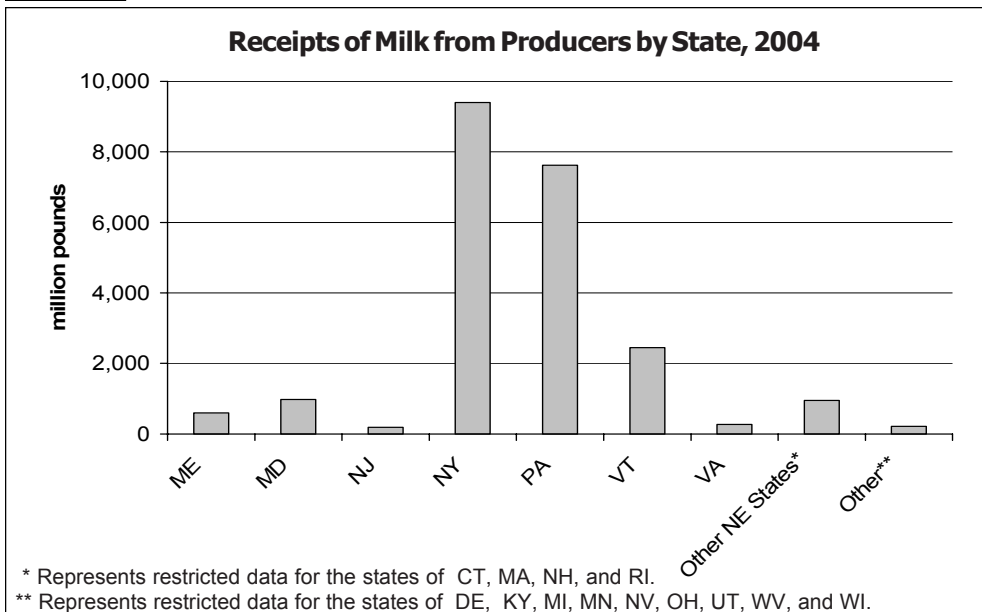
9 Receipts of Milk from Producers by State*, 2004

	<u>Maine</u>	<u>Maryland</u>	<u>New Jersey</u>	<u>New York</u>	<u>Pennsylvania</u>
	thousand pounds				
January	49,873	83,678	16,357	845,638	650,741
February	46,870	83,315	15,541	794,018	633,519
March	50,969	91,418	17,042	866,119	701,198
April	49,904	92,604	16,576	708,447	662,750
May	52,374	93,742	17,020	746,062	677,380
June	51,573	78,841	15,748	723,705	620,986
July	52,860	79,166	15,805	871,072	640,233
August	51,484	73,285	15,049	807,339	615,696
September	48,735	70,551	14,491	753,702	587,210
October	49,228	73,996	14,757	769,637	601,528
November	46,908	74,378	14,077	732,071	593,183
December	49,079	80,359	14,905	779,862	636,603
Total	599,857	975,333	187,368	9,397,672	7,621,027
% of Total	2.6	4.3	0.8	41.5	33.6

	<u>Vermont</u>	<u>Virginia</u>	<u>Other New England States**</u>	<u>Other States***</u>	<u>All States</u>
	thousand pounds				
January	219,287	21,539	81,878	23,279	1,992,270
February	206,040	21,832	77,500	22,704	1,901,339
March	219,984	27,505	83,690	28,843	2,086,768
April	174,803	27,393	80,758	26,944	1,840,179
May	183,333	24,342	83,665	17,149	1,895,067
June	178,638	21,161	79,821	14,000	1,784,473
July	219,107	23,211	80,585	13,723	1,995,762
August	214,472	20,884	78,431	14,028	1,890,668
September	204,043	21,414	74,369	12,971	1,787,486
October	208,706	21,159	76,392	13,355	1,828,758
November	201,341	20,727	74,365	13,442	1,770,492
December	214,544	21,525	81,522	15,353	1,893,752
Total	2,444,298	272,692	952,976	215,791	22,667,014
% of Total	10.8	1.2	4.2	1.0	100.0

* As reported by handlers at time of calculation of monthly uniform price. Totals may not add due to rounding.
 ** Represents restricted data for the states of Connecticut, Massachusetts, New Hampshire, and Rhode Island.
 *** Represents restricted data for the states of Delaware, Kentucky, Michigan, Minnesota, Nevada, Ohio, Utah, West Virginia, and Wisconsin.

Figure 9



10 Number of Producers by State*, 2004

	<u>Maine</u>	<u>Maryland</u>	<u>New Jersey</u>	<u>New York</u>	<u>Pennsylvania</u>
January	394	602	130	5,964	6,466
February	389	597	126	5,918	6,437
March	388	598	125	5,892	6,393
April	394	597	123	4,843	6,123
May	390	594	122	4,845	6,207
June	388	586	122	4,827	6,236
July	386	583	120	5,806	6,338
August	386	585	119	5,839	6,352
September	383	583	119	5,816	6,280
October	383	575	121	5,778	6,279
November	380	573	119	5,714	6,296
December	377	574	119	5,661	6,257
Average	387	587	122	5,575	6,305

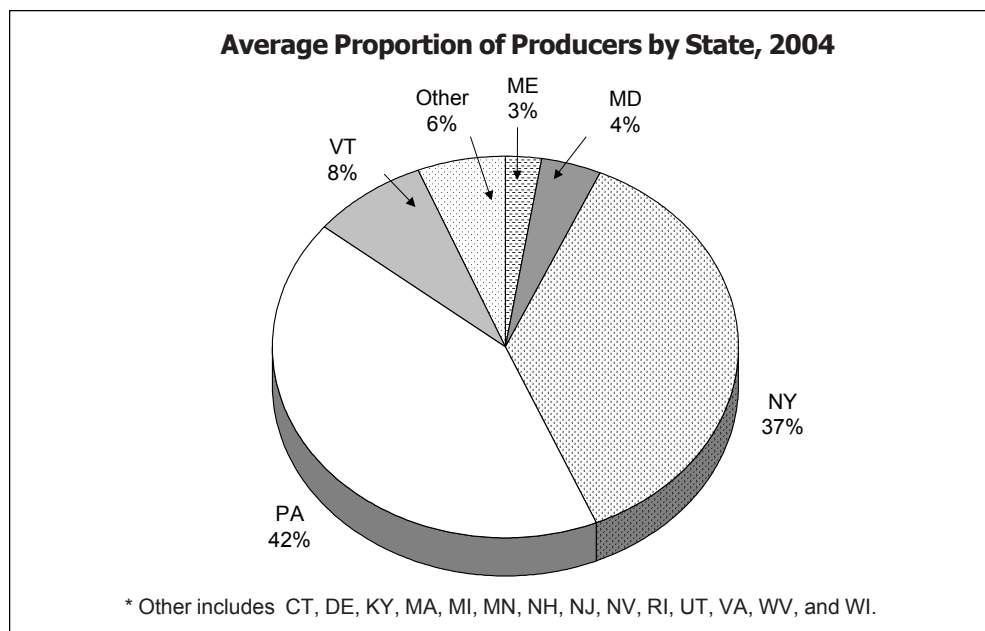
	<u>Vermont</u>	<u>Virginia</u>	<u>Other New England States**</u>	<u>Other States***</u>	<u>All States</u>
January	1,305	179	543	177	15,760
February	1,284	177	530	176	15,634
March	1,262	174	525	190	15,547
April	1,059	196	522	192	14,049
May	1,056	191	525	127	14,057
June	1,073	167	526	124	14,049
July	1,256	201	528	122	15,340
August	1,255	165	524	134	15,359
September	1,255	175	524	125	15,260
October	1,250	168	515	125	15,194
November	1,250	158	514	124	15,128
December	1,242	165	538	154	15,087
Average	1,212	176	526	148	15,039

* As reported by handlers at time of calculation of monthly uniform price.

** Represents restricted data for the states of Connecticut, Massachusetts, New Hampshire, and Rhode Island.

*** Represents restricted data for the states of Delaware, Kentucky, Michigan, Minnesota, Nevada, Ohio, Utah, West Virginia, and Wisconsin.

Figure 10



11 Daily Average Output of Producer Milk per Farm by State*, 2004

	Maine	Maryland	New Jersey	New York	Pennsylvania
January	4,083	4,484	4,059	4,574	3,246
February	4,155	4,812	4,253	4,627	3,394
March	4,238	4,931	4,398	4,742	3,538
April	4,222	5,170	4,492	4,876	3,608
May	4,332	5,091	4,500	4,967	3,520
June	4,431	4,485	4,303	4,998	3,319
July	4,417	4,380	4,249	4,840	3,259
August	4,303	4,041	4,079	4,460	3,127
September	4,241	4,034	4,059	4,320	3,117
October	4,146	4,151	3,934	4,297	3,090
November	4,115	4,327	3,943	4,271	3,141
December	4,199	4,516	4,040	4,444	3,282
Average	4,240	4,535	4,192	4,618	3,303

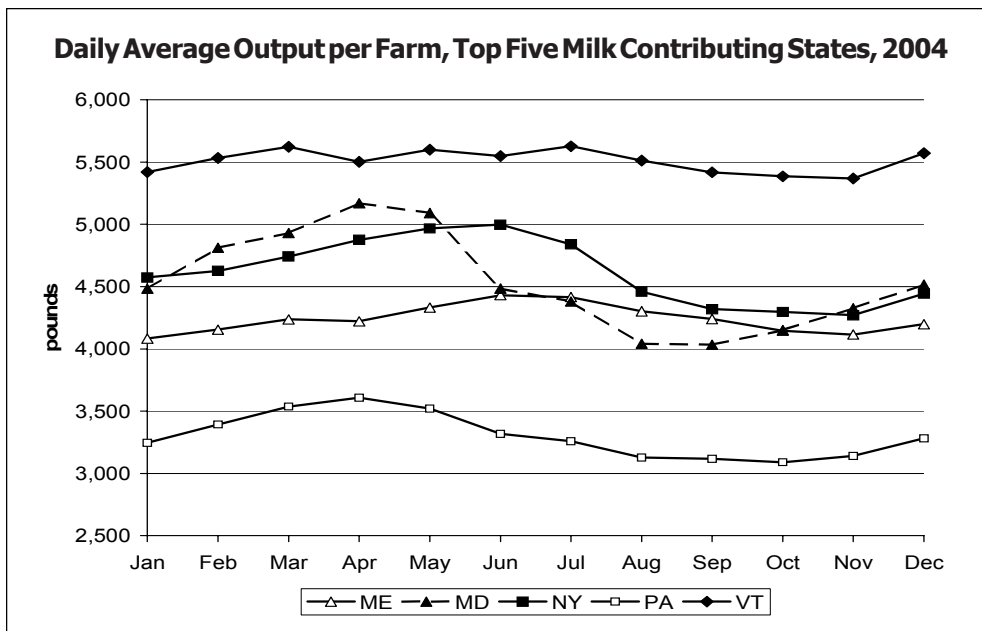
	Vermont	Virginia	Other New England States**	Other States***	All States
January	5,421	3,882	4,864	4,243	4,078
February	5,533	4,253	5,042	4,448	4,194
March	5,623	5,099	5,142	4,897	4,330
April	5,502	4,659	5,157	4,678	4,366
May	5,600	4,111	5,141	4,356	4,349
June	5,549	4,224	5,058	3,763	4,234
July	5,627	3,725	4,923	3,629	4,197
August	5,513	4,083	4,828	3,377	3,971
September	5,419	4,079	4,731	3,459	3,905
October	5,386	4,063	4,785	3,446	3,883
November	5,369	4,373	4,823	3,613	3,901
December	5,572	4,208	4,888	3,216	4,049
Average	5,510	4,230	4,949	3,927	4,121

* As reported by handlers at time of calculation of monthly uniform price.

** Represents restricted data for the states of Connecticut, Massachusetts, New Hampshire, and Rhode Island.

*** Represents restricted data for the states of Delaware, Kentucky, Michigan, Minnesota, Nevada, Ohio, Utah, West Virginia, and Wisconsin.

Figure 11



12 Average Butterfat Tests of Milk Received from Producers*, by State, 2004

	<u>Maine</u>	<u>Maryland</u>	<u>New Jersey</u> percent	<u>New York</u>	<u>Pennsylvania</u>
January	3.78	3.84	3.74	3.73	3.76
February	3.73	3.81	3.70	3.72	3.74
March	3.72	3.75	3.66	3.69	3.69
April	3.69	3.68	3.62	3.65	3.63
May	3.65	3.57	3.51	3.58	3.56
June	3.60	3.56	3.48	3.53	3.54
July	3.59	3.55	3.49	3.54	3.53
August	3.61	3.59	3.50	3.56	3.56
September	3.68	3.65	3.55	3.59	3.61
October	3.76	3.76	3.69	3.69	3.71
November	3.83	3.82	3.71	3.76	3.74
December	3.78	3.81	3.66	3.73	3.72
Average	3.70	3.70	3.61	3.65	3.65

	<u>Vermont</u>	<u>Virginia</u>	<u>Other New</u> <u>England States**</u> percent	<u>Other States***</u>	<u>All States</u>
January	3.81	3.67	3.86	3.89	3.79
February	3.80	3.64	3.81	3.90	3.76
March	3.77	3.55	3.76	3.71	3.70
April	3.74	3.49	3.73	3.65	3.65
May	3.68	3.43	3.64	3.62	3.58
June	3.64	3.42	3.62	3.58	3.55
July	3.61	3.42	3.61	3.58	3.55
August	3.63	3.47	3.64	3.60	3.57
September	3.67	3.52	3.68	3.66	3.62
October	3.77	3.60	3.77	3.75	3.72
November	3.84	3.63	3.86	3.80	3.78
December	3.81	3.65	3.85	4.02	3.78
Average	3.73	3.54	3.73	3.73	3.67

* Tests based on audited producer payroll reports.

** Represents restricted data for the states of Connecticut, Massachusetts, New Hampshire, and Rhode Island.

*** Represents restricted data for the states of Delaware, Kentucky, Michigan, Minnesota, Nevada, Ohio, Utah, West Virginia, and Wisconsin.

13 Average Protein Tests of Milk Received from Producers*, by State, 2004

	<u>Maine</u>	<u>Maryland</u>	<u>New Jersey</u> percent	<u>New York</u>	<u>Pennsylvania</u>
January	3.15	3.00	3.12	3.06	3.07
February	3.10	3.09	3.09	3.05	3.02
March	3.09	2.96	3.06	3.03	2.95
April	3.04	2.90	3.02	3.00	2.89
May	3.02	2.85	2.96	2.96	2.90
June	3.02	2.89	2.94	2.95	2.93
July	2.98	2.89	2.99	2.93	2.94
August	3.01	2.95	3.01	2.97	2.96
September	3.08	2.98	3.05	3.00	3.00
October	3.12	3.09	3.13	3.08	3.09
November	3.14	3.11	3.13	3.10	3.10
December	3.09	3.06	3.12	3.07	3.07
Average	3.07	2.98	3.05	3.02	2.99

	<u>Vermont</u>	<u>Virginia</u>	<u>Other New</u> <u>England States**</u> percent	<u>Other States***</u>	<u>All States</u>
January	3.12	3.11	3.14	3.14	3.10
February	3.10	3.09	3.11	3.09	3.08
March	3.09	3.07	3.09	3.02	3.04
April	3.05	3.04	3.06	3.02	3.00
May	3.00	2.92	3.02	2.96	2.96
June	3.02	2.97	3.02	2.98	2.97
July	3.01	2.98	2.99	2.97	2.96
August	3.00	3.01	3.02	3.00	2.99
September	3.06	3.06	3.08	3.06	3.04
October	3.12	3.14	3.17	3.15	3.12
November	3.15	3.14	3.21	3.16	3.14
December	3.11	3.14	3.16	3.18	3.11
Average	3.07	3.06	3.09	3.06	3.04

* Tests based on audited producer payroll reports.

** Represents restricted data for the states of Connecticut, Massachusetts, New Hampshire, and Rhode Island.

*** Represents restricted data for the states of Delaware, Kentucky, Michigan, Minnesota, Nevada, Ohio, Utah, West Virginia, and Wisconsin.

14 Average Other Solids Tests of Milk Received from Producers*, by State, 2004

	<u>Maine</u>	<u>Maryland</u>	<u>New Jersey</u> percent	<u>New York</u>	<u>Pennsylvania</u>
January	5.69	5.43	5.66	5.66	5.66
February	5.67	5.60	5.65	5.67	5.59
March	5.68	5.46	5.66	5.66	5.52
April	5.66	5.45	5.67	5.66	5.49
May	5.70	5.44	5.70	5.69	5.57
June	5.70	5.56	5.71	5.69	5.65
July	5.70	5.55	5.66	5.66	5.64
August	5.68	5.57	5.68	5.66	5.63
September	5.68	5.53	5.70	5.64	5.63
October	5.59	5.52	5.67	5.63	5.62
November	5.58	5.54	5.64	5.63	5.62
December	5.55	5.52	5.68	5.64	5.63
Average	5.66	5.51	5.67	5.66	5.60

	<u>Vermont</u>	<u>Virginia</u>	<u>Other New</u> <u>England States**</u> percent	<u>Other States***</u>	<u>All States</u>
January	5.67	5.80	5.68	5.69	5.66
February	5.66	5.79	5.67	5.62	5.66
March	5.66	5.78	5.66	5.50	5.62
April	5.70	5.79	5.69	5.63	5.64
May	5.70	5.67	5.70	5.64	5.65
June	5.71	5.75	5.69	5.73	5.69
July	5.69	5.73	5.67	5.69	5.67
August	5.68	5.79	5.66	5.69	5.67
September	5.66	5.79	5.64	5.66	5.66
October	5.64	5.77	5.65	5.65	5.64
November	5.66	5.77	5.66	5.65	5.64
December	5.66	5.81	5.67	5.64	5.64
Average	5.67	5.77	5.67	5.65	5.65

* Tests based on audited producer payroll reports.

** Represents restricted data for the states of Connecticut, Massachusetts, New Hampshire, and Rhode Island.

*** Represents restricted data for the states of Delaware, Kentucky, Michigan, Minnesota, Nevada, Ohio, Utah, West Virginia, and Wisconsin.

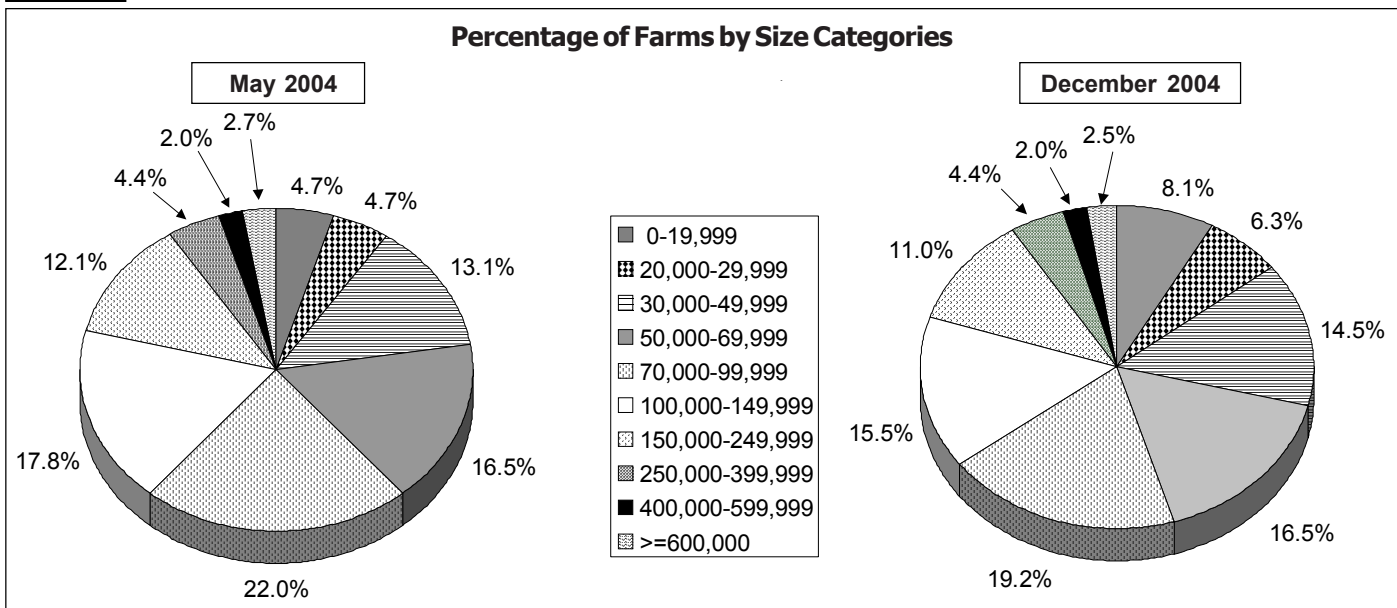
15 Number of Farms by Size Categories, May and December 2004*

Production Range Pounds	May 2004			
	Farms		Milk	
	Number	Percentage	Total Pounds	Percentage
0-19,999	659	4.7	8,138,312	0.4
20,000-29,999	656	4.7	16,658,171	0.9
30,000-49,999	1,844	13.1	75,016,585	4.0
50,000-69,999	2,313	16.5	140,114,046	7.4
70,000-99,999	3,079	22.0	258,231,517	13.6
100,000-149,999	2,496	17.8	303,673,922	16.0
150,000-249,999	1,699	12.1	319,567,892	16.9
250,000-399,999	617	4.4	190,125,421	10.0
400,000-599,999	277	2.0	134,527,568	7.1
>=600,000	383	2.7	447,704,306	23.7
Total	14,023	100.0	1,893,757,740	100.0

Production Range Pounds	December 2004			
	Farms		Milk	
	Number	Percentage	Total Pounds	Percentage
0-19,999	1,224	8.1	13,907,581	0.7
20,000-29,999	944	6.3	23,851,381	1.3
30,000-49,999	2,181	14.5	87,833,201	4.6
50,000-69,999	2,493	16.5	149,313,030	7.9
70,000-99,999	2,888	19.2	241,323,908	12.7
100,000-149,999	2,335	15.5	285,130,772	15.0
150,000-249,999	1,660	11.0	312,339,348	16.5
250,000-399,999	665	4.4	205,897,970	10.9
400,000-599,999	304	2.0	148,888,852	7.9
>=600,000	378	2.5	425,342,077	22.5
Total	15,072	100.0	1,893,828,120	100.0

* Data compiled from payroll records; number of producers and total pounds varies from data reported at pool time shown in other tables.

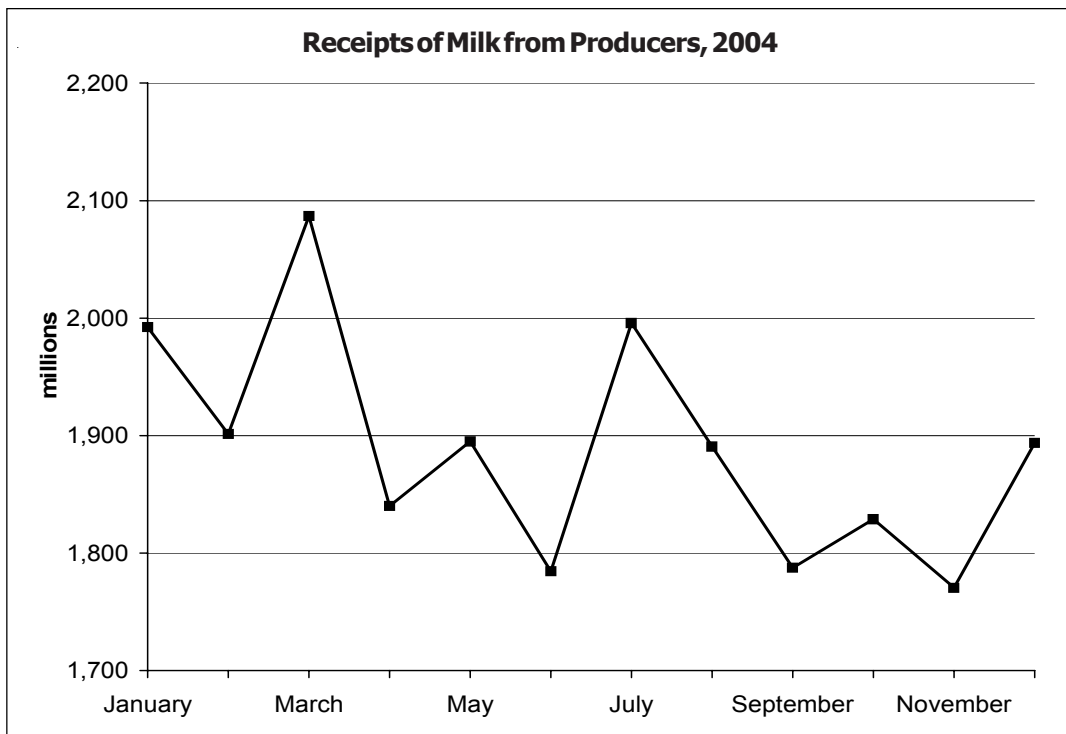
Figure 12



16 Receipts of Fluid Milk Products and Cream at Pool Plants, 2004

	Milk from Producers	Other Sources	Fortification and Reconstitution (skim equiv.)	Overages	Opening Inventory	Total to be Accounted for
	pounds					
January	1,992,269,634	43,340,556	17,729,618	1,252,312	150,200,998	2,204,793,118
February	1,901,338,534	37,450,713	13,728,779	1,378,436	146,352,412	2,100,248,874
March	2,086,767,644	48,425,179	12,462,143	793,129	166,258,973	2,314,707,068
April	1,840,178,735	105,708,064	14,189,112	194,935	160,457,132	2,120,727,978
May	1,895,066,821	125,479,152	16,092,671	911,350	157,919,203	2,195,469,197
June	1,784,472,591	127,408,468	20,438,749	196,791	166,019,817	2,098,536,416
July	1,995,762,022	46,546,248	18,862,576	128,920	160,249,921	2,221,549,687
August	1,890,667,571	49,873,982	18,270,027	111,914	150,869,449	2,109,792,943
September	1,787,485,712	43,171,908	17,493,179	421,365	157,173,394	2,005,745,558
October	1,828,757,810	52,979,145	17,627,912	1,171,571	154,922,600	2,055,459,038
November	1,770,491,563	52,305,219	18,586,622	314,712	174,565,615	2,016,263,731
December	1,893,751,991	64,647,112	15,375,509	230,321	159,192,067	2,133,197,000
Total	22,667,010,628	797,335,746	200,856,897	7,105,756	1,904,181,581	25,576,490,608

Figure 13



17 Receipts from Producers by Class and Plant Location Differential, 2004

	Class I						Market Total
	Location Differential*						
	3.15 and above	3.00 - 3.10	2.80 - 2.95	2.60 - 2.70	2.40 - 2.55	2.35 and below	
	pounds						
January	290,891,806	310,741,310	128,414,920	93,511,943	84,530,542	36,293,686	944,384,207
February	250,372,902	264,736,636	116,548,944	84,884,193	78,264,070	33,415,852	828,222,597
March	283,623,473	300,122,984	133,248,027	94,202,143	85,849,394	33,615,294	930,661,315
April	272,371,621	284,942,785	129,776,039	91,315,500	80,221,921	33,674,532	892,302,398
May	256,988,742	272,503,916	117,942,266	92,792,799	80,779,613	27,147,568	848,154,904
June	246,199,345	262,921,827	117,226,577	93,111,006	73,340,028	25,255,651	818,054,434
July	253,935,762	288,824,276	125,274,376	97,869,388	73,024,415	26,438,091	865,366,308
August	248,148,640	278,684,282	139,843,875	96,568,902	74,765,066	24,250,382	862,261,147
September	262,293,608	289,741,453	154,480,125	98,491,999	83,419,243	26,153,080	914,579,508
October	267,488,719	290,927,598	159,427,234	103,159,833	82,282,788	26,360,655	929,646,827
November	261,732,209	296,416,084	142,760,456	108,972,238	85,498,556	24,829,866	920,209,409
December	260,885,126	316,516,269	140,838,381	113,568,990	80,514,474	25,593,450	937,916,690
Total	3,154,931,953	3,457,079,420	1,605,781,220	1,168,448,934	962,490,110	343,028,107	10,691,759,744
% of Total	29.5	32.4	15.0	10.9	9.0	3.2	100.0

	Class II						Market Total
	Location Differential*						
	3.15 and above	3.00 - 3.10	2.80 - 2.95	2.60 - 2.70	2.40 - 2.55	2.35 and below	
	pounds						
January	53,766,485	67,426,779	67,065,474	39,152,473	52,885,028	73,097,664	353,393,903
February	52,963,060	67,378,322	70,379,476	35,652,153	50,229,353	75,973,154	352,575,518
March	64,515,214	84,631,266	81,092,269	41,960,480	55,033,388	91,565,865	418,798,482
April	55,796,162	74,811,002	67,527,333	35,276,799	63,319,449	66,638,175	363,368,920
May	62,127,990	83,733,349	66,722,157	39,517,720	63,562,364	71,618,825	387,282,405
June	61,296,747	85,101,152	77,815,201	39,775,738	63,063,614	69,084,718	396,137,170
July	59,030,568	81,737,730	76,735,003	40,401,254	61,578,087	63,542,862	383,025,504
August	58,239,733	83,046,149	72,165,406	42,044,951	53,389,616	72,285,022	381,170,877
September	57,443,807	84,322,901	65,892,548	40,632,363	46,684,745	62,092,991	357,069,355
October	57,644,237	81,883,563	71,274,328	39,614,433	49,648,638	67,451,731	367,516,930
November	59,392,264	79,353,250	67,578,104	38,773,892	45,207,893	61,214,461	351,519,864
December	55,704,936	72,446,686	64,294,733	39,665,216	38,866,264	56,477,732	327,455,567
Total	697,921,203	945,872,149	848,542,032	472,467,472	643,468,439	831,043,200	4,439,314,495
% of Total	15.7	21.3	19.1	10.7	14.5	18.7	100.0

	Class III						Market Total
	Location Differential*						
	3.15 and above	3.00 - 3.10	2.80 - 2.95	2.60 - 2.70	2.40 - 2.55	2.35 and below	
	pounds						
January	15,283,243	35,955,953	51,904,236	63,139,519	121,502,626	240,197,338	527,982,915
February	22,272,198	43,629,390	57,634,686	65,523,608	130,452,708	228,667,203	548,179,793
March	18,884,272	39,653,173	63,375,459	69,705,268	133,813,470	259,099,562	584,531,204
April	16,314,426	33,114,267	53,257,268	37,427,280	94,036,260	129,056,031	363,205,532
May	15,047,895	32,731,487	46,860,312	31,870,370	83,027,609	114,563,128	324,100,801
June	19,221,547	9,742,702	53,546,787	37,665,680	87,978,336	114,275,324	322,430,376
July	17,184,571	10,486,671	52,058,259	70,349,425	102,593,631	246,416,383	499,088,940
August	21,880,566	13,192,038	57,724,742	67,089,861	100,968,568	195,895,471	456,751,246
September	20,845,672	10,519,450	48,618,710	64,502,483	85,678,241	176,384,983	406,549,539
October	20,661,729	13,242,590	55,253,067	67,922,779	87,472,649	186,043,404	430,596,218
November	19,424,728	13,106,818	53,363,068	61,535,604	93,293,939	174,437,578	415,161,735
December	19,818,653	11,615,770	50,259,347	67,210,968	91,752,050	179,929,551	420,586,339
Total	226,839,500	266,990,309	643,855,941	703,942,845	1,212,570,087	2,244,965,956	5,299,164,638
% of Total	4.3	5.0	12.1	13.3	22.9	42.4	100.0

	Class IV						Market Total
	Location Differential*						
	3.15 and above	3.00 - 3.10	2.80 - 2.95	2.60 - 2.70	2.40 - 2.55	2.35 and below	
	pounds						
January	5,101,679	42,462,109	83,292,642	3,779,368	13,080,198	18,792,613	166,508,609
February	6,634,447	36,894,493	80,159,497	2,708,046	24,307,392	21,656,751	172,360,626
March	5,309,937	22,151,795	83,346,804	3,397,767	27,784,096	10,786,244	152,776,643
April	1,558,013	46,550,112	115,643,103	668,681	30,792,080	26,089,896	221,301,885
May	10,921,329	98,281,261	137,906,231	4,948,699	43,266,985	40,204,206	335,528,711
June	5,052,480	65,547,915	99,898,689	1,635,529	33,842,368	41,873,630	247,850,611
July	3,372,835	62,219,523	96,668,096	1,319,268	44,769,275	39,932,273	248,281,270
August	10,614,519	59,989,512	61,388,878	4,362,877	28,211,085	25,917,430	190,484,301
September	5,265,836	29,554,853	30,825,112	1,751,302	20,091,171	21,799,036	109,287,310
October	10,785,872	19,583,722	21,486,641	3,286,886	20,632,636	25,222,078	100,997,835
November	3,276,621	15,657,831	30,115,633	1,307,340	11,456,333	21,786,797	83,600,555
December	2,203,998	51,634,369	77,822,379	1,160,770	41,484,866	33,487,013	207,793,395
Total	70,097,566	550,527,495	918,553,705	30,326,533	339,718,485	327,547,967	2,236,771,751
% of Total	3.1	24.6	41.1	1.4	15.2	14.6	100.0

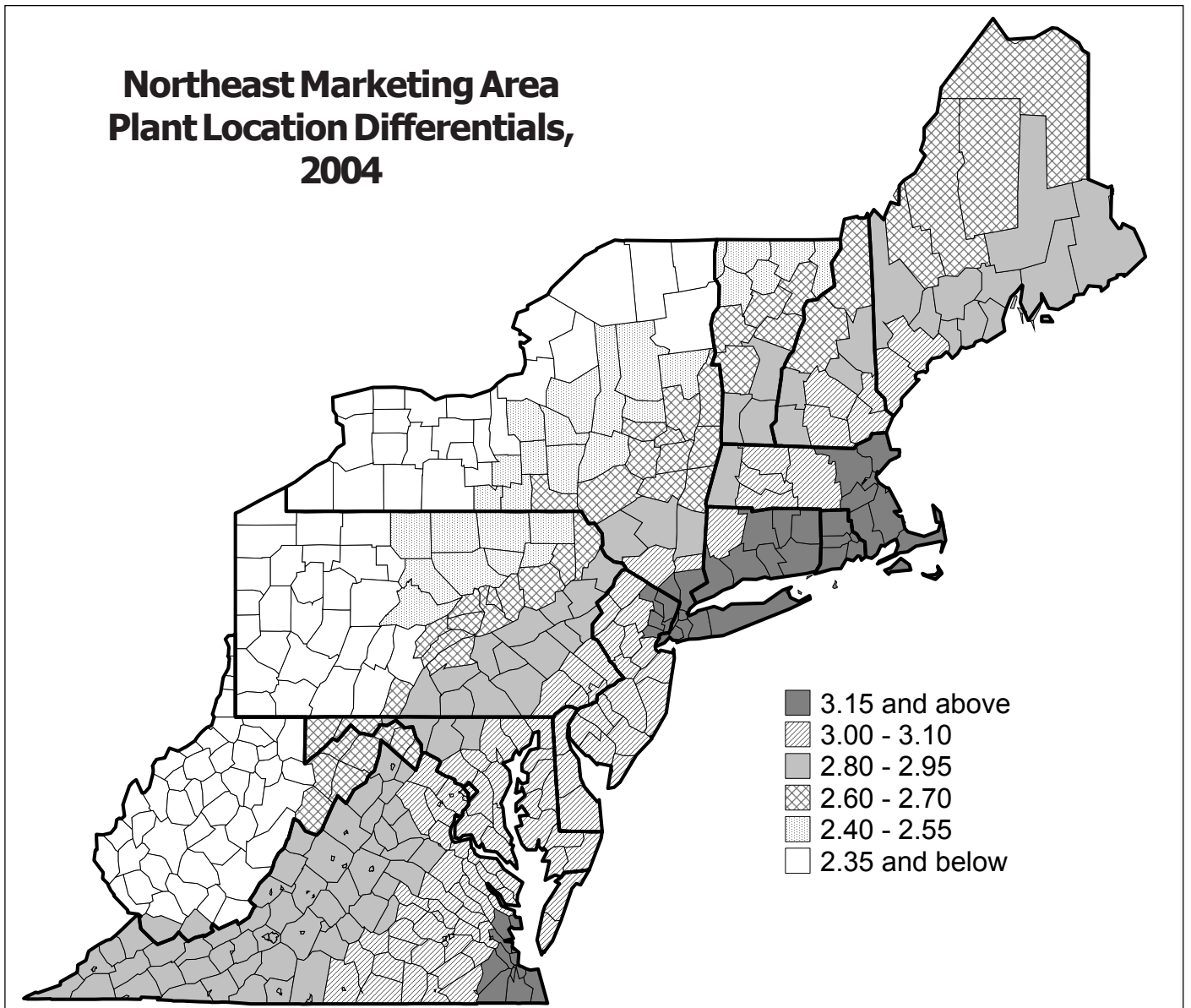
(Continued on following page)

17 Receipts from Producers by Class and Plant Location Differential, 2004 (Continued)

	Total Receipts						Market Total
	Location Differential*						
	3.15 and above	3.00 - 3.10	2.80 - 2.95	2.60 - 2.70	2.40 - 2.55	2.35 and below	
	pounds						
January	365,043,213	456,586,151	330,677,272	199,583,303	271,998,394	368,381,301	1,992,269,634
February	332,242,607	412,638,841	324,722,603	188,768,000	283,253,523	359,712,960	1,901,338,534
March	372,332,896	446,559,218	361,062,559	209,265,658	302,480,348	395,066,965	2,086,767,644
April	346,040,222	439,418,166	366,203,743	164,688,260	268,369,710	255,458,634	1,840,178,735
May	345,085,956	487,250,013	369,430,966	169,129,588	270,636,571	253,533,727	1,895,066,821
June	331,770,119	423,313,596	348,487,254	172,187,953	258,224,346	250,489,323	1,784,472,591
July	333,523,736	443,268,200	350,735,734	209,939,335	281,965,408	376,329,609	1,995,762,022
August	338,883,458	434,911,981	331,122,901	210,066,591	257,334,335	318,348,305	1,890,667,571
September	345,848,923	414,138,657	299,816,495	205,378,147	235,873,400	286,430,090	1,787,485,712
October	356,580,557	405,637,473	307,441,270	213,983,931	240,036,711	305,077,868	1,828,757,810
November	343,825,822	404,533,983	293,817,261	210,589,074	235,456,721	282,268,702	1,770,491,563
December	338,612,713	452,213,094	333,214,840	221,605,944	252,617,654	295,487,746	1,893,751,991
Total	4,149,790,222	5,220,469,373	4,016,732,898	2,375,185,784	3,158,247,121	3,746,585,230	22,667,010,628
% of Total	18.3	23.0	17.7	10.5	14.0	16.5	100.0

* Differentials have been combined in ranges to assure confidentiality of data.

Figure 14



18 Receipts from Producers by Class, 2000–2004

	Class I	Class II	Class III	Class IV	Total Producer Receipts
	pounds				
2000 Total/Average	10,513,080,398	4,146,856,906	6,963,402,212	2,333,530,481	23,956,869,997
2001 Total/Average	10,642,087,857	4,101,530,653	7,675,019,663	2,131,191,424	24,549,829,597
2002 Total/Average	10,694,757,200	4,408,099,782	7,789,391,765	2,464,784,010	25,357,032,757
2003 Total/Average	10,701,230,822	4,450,192,748	6,817,137,251	2,068,252,647	24,036,813,468
January	944,384,207	353,393,903	527,982,915	166,508,609	1,992,269,634
February	828,222,597	352,575,518	548,179,793	172,360,626	1,901,338,534
March	930,661,315	418,798,482	584,531,204	152,776,643	2,086,767,644
April	892,302,398	363,368,920	363,205,532	221,301,885	1,840,178,735
May	848,154,904	387,282,405	324,100,801	335,528,711	1,895,066,821
June	818,054,434	396,137,170	322,430,376	247,850,611	1,784,472,591
July	865,366,308	383,025,504	499,088,940	248,281,270	1,995,762,022
August	862,261,147	381,170,877	456,751,246	190,484,301	1,890,667,571
September	914,579,508	357,069,355	406,549,539	109,287,310	1,787,485,712
October	929,646,827	367,516,930	430,596,218	100,997,835	1,828,757,810
November	920,209,409	351,519,864	415,161,735	83,600,555	1,770,491,563
December	937,916,690	327,455,567	420,586,339	207,793,395	1,893,751,991
2004 Total/Average	10,691,759,744	4,439,314,495	5,299,164,638	2,236,771,751	22,667,010,628

19 Percent of Receipts from Producers by Class, 2000–2004

	Class I	Class II	Class III	Class IV
	percent			
2000 Average	43.9	17.3	29.1	9.7
2001 Average	43.3	16.7	31.3	8.7
2002 Average	42.3	17.4	30.7	9.6
2003 Average	44.6	18.5	28.4	8.5
January	47.4	17.7	26.5	8.4
February	43.6	18.5	28.8	9.1
March	44.6	20.1	28.0	7.3
April	48.5	19.7	19.7	12.1
May	44.8	20.4	17.1	17.7
June	45.8	22.2	18.1	13.9
July	43.4	19.2	25.0	12.4
August	45.6	20.2	24.2	10.0
September	51.2	20.0	22.7	6.1
October	50.8	20.1	23.5	5.6
November	52.0	19.9	23.4	4.7
December	49.5	17.3	22.2	11.0
2004 Average	47.1	19.6	23.4	9.9

20 Utilization of Fluid Milk Products and Cream at Pool Plants*, 2000–2004

	Class I Milk			
	Marketing Area Product	Outside Markets		Total Class I Product
		Other Federal	Non-Federal	
	pounds			
2000 Total	10,187,142,372	162,117,224	984,126,533	11,333,386,129
2001 Total	10,264,052,007	176,177,552	1,072,597,053	11,512,826,612
2002 Total	10,244,525,929	331,126,928	1,095,191,625	11,670,844,482
2003 Total	10,219,946,595	402,117,149	1,136,099,922	11,758,163,666
January	895,614,769	33,631,904	101,679,886	1,030,926,559
February	802,109,773	34,579,946	83,220,525	919,910,244
March	893,047,543	41,305,262	92,349,008	1,026,701,813
April	855,245,160	36,110,974	91,805,611	983,161,745
May	836,456,229	34,501,546	87,420,623	958,378,398
June	794,310,966	36,739,787	83,114,999	914,165,752
July	838,462,648	38,404,427	75,857,825	952,724,900
August	807,576,957	55,937,615	89,291,318	952,805,890
September	851,667,479	59,936,945	91,891,580	1,003,496,004
October	874,945,219	57,871,771	94,512,873	1,027,329,863
November	873,127,404	47,060,058	97,941,171	1,018,128,633
December	905,970,571	35,624,528	94,918,229	1,036,513,328
2004 Total	10,228,534,718	511,704,763	1,084,003,648	11,824,243,129
	Class II Product	Class III Product**	Class IV Product	Total Utilization Product
	pounds			
2000 Total	4,465,756,066	7,349,835,077	3,244,864,376	26,393,841,648
2001 Total	4,475,297,360	7,816,816,903	3,200,227,043	27,005,167,918
2002 Total	4,723,223,874	7,959,334,365	3,641,726,270	27,995,128,991
2003 Total	4,773,261,693	6,949,898,050	3,200,811,167	26,682,134,576
January	380,465,250	539,564,871	253,836,438	2,204,793,118
February	379,622,077	557,845,001	242,871,552	2,100,248,874
March	450,492,152	598,686,878	238,826,225	2,314,707,068
April	394,528,273	426,114,252	316,923,708	2,120,727,978
May	414,537,715	391,298,236	431,254,848	2,195,469,197
June	430,291,542	384,965,417	369,113,705	2,098,536,416
July	414,703,027	512,709,312	341,412,448	2,221,549,687
August	412,754,775	468,338,658	275,893,620	2,109,792,943
September	389,854,182	417,880,868	194,514,504	2,005,745,558
October	395,618,512	441,888,299	190,622,364	2,055,459,038
November	386,082,370	428,326,533	183,726,195	2,016,263,731
December	361,855,952	432,187,230	302,640,490	2,133,197,000
Total	4,810,805,827	5,599,805,555	3,341,636,097	25,576,490,608

* Excludes receipts from pool handlers.

** Includes Minimum Price Class utilization (animal feed and dumpage).

21 Class I Route Sales Inside the Northeast Order by Nonpool Handlers, 2000-04

Month	Order No. 5		Order No. 30		Order No. 33		All Other Federal Orders*		Partially Regulated	Producer-Handlers	Exempt Plants	Total In-Area Sales by Nonpool Handlers	
	Appalachian	Upper Midwest	Upper Midwest	Mideast	Mideast	Federal Orders*	Pounds	Pounds					
2000 Total	935,002	1,083,307	44,761,238	2,669,562	192,100,000	63,515,000	30,497,000	335,561,109					
2001 Total	1,777,441	4,367,272	62,198,597	2,037,177	136,594,000	67,906,000	39,736,000	314,616,487					
2002 Total	1,858,345	6,297,326	78,218,649	5,017,132	157,961,017	69,087,267	40,120,995	358,560,731					
2003 Total	2,796,844	4,704,595	88,652,930	7,449,143	144,370,435	69,183,362	40,902,597	358,059,906					
January	751,884	569,611	7,187,029	489,092	12,333,845	6,518,252	3,422,966	31,272,679					
February	590,923	2,137,666	6,488,009	311,762	10,299,017	5,913,329	2,938,798	28,679,504					
March	616,928	1,060,748	7,559,625	785,459	11,658,508	6,778,619	3,249,408	31,709,295					
April	693,080	608,029	6,676,163	66,653	11,714,757	6,554,105	3,073,258	29,386,045					
May	551,661	602,470	7,110,947	54,324	11,980,041	6,540,698	3,309,412	30,149,553					
June	577,612	708,486	6,953,249	49,730	11,695,019	6,022,278	3,287,105	29,293,479					
July	693,645	333,881	5,754,373	87,136	10,911,644	5,946,306	3,146,815	26,873,800					
August	559,768	341,827	6,551,683	412,373	11,385,433	5,591,855	3,370,819	28,213,758					
September	713,145	689,040	6,894,397	400,638	11,969,476	5,550,823	3,289,076	29,506,595					
October	690,979	443,681	6,970,652	113,918	11,949,483	6,306,429	3,580,720	30,055,862					
November	689,732	431,796	6,248,476	60,964	11,685,501	6,064,635	3,436,620	28,617,724					
December	601,112	352,650	6,683,615	95,167	12,365,541	6,813,213	3,064,692	29,975,990					
2004 Total	7,730,469	8,279,885	81,078,218	2,927,216	139,948,265	74,600,542	39,169,689	353,734,284					

* Includes Order Nos. 6-Florida, 7-Southeast, 32-Central, 124-Pacific Northwest, 126-Southwest, 131-Arizona-Las Vegas, 135-Western.

22 Fluid Milk Products Utilized as Class I Milk in the Marketing Area at Pool Plants, 2004

	Whole Milk			Reduced Fat Milk			Lowfat Milk		
	Product pounds	Butterfat percent	Fortified	Product pounds	Butterfat percent	Fortified	Product pounds	Butterfat percent	Fortified
January	322,079,759	3.26		170,708,244	1.98		126,485,341	1.00	
February	282,675,788	3.26		157,810,648	1.98		115,989,399	0.99	
March	312,859,502	3.27		174,639,902	1.98		133,476,405	1.00	
April	298,042,814	3.26		163,230,474	1.98	2,282,671	124,944,307	1.00	1,963,647
May	287,116,862	3.26		160,641,065	1.98	618,285	125,882,483	0.99	1,873,293
June	280,357,824	3.25		156,043,489	1.98	757,644	121,953,026	0.99	1,684,664
July	299,760,847	3.26		169,265,484	1.98	3,395,781	127,531,464	0.99	1,873,563
August	287,877,263	3.27		163,099,804	1.99	883,542	124,171,955	1.00	3,087,524
September	290,541,058	3.27		165,409,602	1.99	719,254	130,187,001	1.01	1,290,941
October	298,014,931	3.27		167,184,517	2.00	770,913	132,281,657	1.01	1,802,192
November	298,144,687	3.27		165,820,244	1.99	740,074	131,252,915	1.01	2,923,714
December	315,080,927	3.27		174,822,452	1.98	807,373	137,690,070	0.99	1,839,685
Total/Average	3,572,552,262	3.26		1,988,675,925	1.98	20,275,942	1,531,846,023	1.00	30,632,716

	Fat Free Milk			Flavored Milk & Drinks			Eggnog		
	Product pounds	Butterfat percent	Fortified	Product pounds	Butterfat percent	Fortified	Product pounds	Butterfat percent	Fortified
January	106,389,183	0.09		54,281,891	1.64		1,810,187	1.10	
February	98,810,299	0.09		9,949,788	0.13		1,796,562	1.09	
March	111,371,615	0.09		10,064,826	0.12		2,408,414	1.14	
April	105,292,551	0.09		10,068,319	0.11		1,909,231	1.09	
May	106,276,328	0.08		9,481,499	0.13		1,935,598	1.11	
June	102,021,787	0.09		9,121,459	0.12		1,981,238	1.10	
July	109,281,872	0.09		9,659,772	0.13		2,137,683	1.07	
August	104,712,184	0.09		9,354,356	0.12		2,032,952	1.11	
September	108,181,475	0.10		9,661,980	0.12		1,956,964	1.09	
October	110,046,921	0.10		9,707,138	0.12		1,965,197	1.08	
November	107,779,924	0.09		9,462,485	0.12		2,167,911	1.07	
December	111,386,938	0.10		9,355,615	0.13		2,531,385	1.83	
Total/Average	1,281,551,077	0.09		120,813,556	0.12		24,633,322	1.16	

	Shrinkage & Interhandler			Total Class I Milk in the Marketing Area			Class I Out of Area			Total		
	Product pounds	Butterfat percent	Difference	Product pounds	Butterfat percent	Ending Inventory	Product pounds	Butterfat percent	Product pounds	Product pounds	Butterfat percent	Product pounds
January	(100,262)	N/A		81,855,570	2.04		895,614,769	2.07	135,311,790	2.00	1,030,926,559	2.06
February	(1,539,788)	N/A		84,655,123	1.90		802,109,773	2.05	117,800,471	1.91	919,910,244	2.04
March	(1,508,508)	N/A		82,436,378	1.93		893,047,543	2.04	133,654,270	1.90	1,026,701,813	2.02
April	(1,459,062)	N/A		100,188,663	1.87		855,245,160	2.05	127,916,585	1.89	983,161,745	2.03
May	1,445,917	32.66		85,121,417	1.88		836,456,229	2.01	121,922,169	1.87	958,378,398	1.99
June	(1,000,817)	N/A		78,450,900	1.85		794,310,966	2.04	119,854,786	1.85	914,165,752	2.02
July	(3,530,509)	N/A		83,438,590	1.83		838,462,648	2.05	114,262,252	1.90	952,724,900	2.03
August	908,968	59.91		80,326,749	1.84		807,576,957	2.06	145,228,933	1.88	952,805,890	2.04
September	(512,379)	N/A		88,167,226	1.85		851,667,479	2.01	151,828,525	1.92	1,003,496,004	2.00
October	(506,124)	N/A		89,819,055	1.99		874,945,219	2.04	152,384,644	1.99	1,027,329,863	2.03
November	305,506	N/A		88,740,461	2.01		873,127,404	2.12	145,001,229	2.07	1,018,128,633	2.12
December	(1,710,999)	N/A		86,497,620	1.79		905,970,571	2.11	130,542,757	2.02	1,036,513,328	2.10
Total/Average	(9,208,057)	46.29		1,029,697,752	1.90		10,228,534,718	2.05	1,595,708,411	1.93	11,824,243,129	2.04

* Included with plain due to restricted data.
 ** Restricted data, included in buttermilk.
 N/A = Not applicable.

23 Class II Use of Fluid Milk Products and Cream at Pool Plants*, 2004

	Packaged Cream		Nonpool Bulk**		Bakery, Candy, and Soup Products		Cottage Cheese and Related Products	
	Product	Butterfat	Product	Butterfat	Product	Butterfat	Product	Butterfat
	pounds	percent	pounds	percent	pounds	percent	pounds	percent
January	64,834,661	16.96	31,252,403	6.35	51,080,845	4.38	53,991,293	0.70
February	74,604,719	17.14	22,199,539	5.73	51,515,724	4.07	53,278,983	0.70
March	83,042,603	17.69	28,534,101	6.06	58,730,448	3.69	61,763,520	0.66
April	80,832,531	17.43	29,862,451	5.33	44,019,298	3.46	54,848,391	0.58
May	74,961,147	18.19	27,846,783	5.38	47,391,073	3.35	61,183,010	0.61
June	74,032,540	17.90	29,032,573	5.22	52,465,330	3.45	58,867,985	0.57
July	77,958,814	18.65	21,430,354	8.77	58,287,194	3.68	62,564,557	0.60
August	77,654,051	17.81	27,034,604	5.71	50,607,699	3.59	52,732,516	0.56
September	80,035,452	17.90	29,205,235	4.61	45,776,221	3.56	60,510,284	0.58
October	83,261,417	18.02	26,587,588	4.86	46,539,779	3.74	56,589,748	0.58
November	90,731,596	18.17	27,127,843	5.15	44,434,526	3.58	49,664,129	1.48
December	86,584,151	18.76	28,177,526	5.10	48,005,225	3.56	48,841,655	0.61
Total/Average	948,533,682	17.89	328,291,000	5.69	598,853,362	3.68	674,836,071	0.69

	Ricotta Cheese		Sour Cream and Aerated Cream		Yogurt and Eggnog		Ice Cream, Desserts, Condensed, and Mixes	
	Product	Butterfat	Product	Butterfat	Product	Butterfat	Product	Butterfat
	pounds	percent	pounds	percent	pounds	percent	pounds	percent
January	24,383,220	4.80	18,776,509	12.94	43,402,398	1.49	93,026,444	7.97
February	23,418,457	4.66	19,050,781	13.51	41,607,888	1.46	93,742,354	7.82
March	32,997,473	4.65	22,754,147	13.56	46,016,237	1.58	115,070,540	7.42
April	11,394,699	3.65	17,385,695	13.72	36,331,909	1.61	119,811,415	7.48
May	18,974,052	4.83	20,515,606	13.19	36,303,470	1.67	126,329,527	7.31
June	17,092,641	4.91	21,842,470	12.01	36,975,246	1.49	140,076,929	7.49
July	20,245,749	4.45	19,320,239	13.79	30,156,925	1.90	125,168,708	7.69
August	34,624,832	3.03	22,350,311	12.59	30,146,541	1.89	118,048,094	7.76
September	18,925,446	4.69	21,237,372	12.37	29,603,089	1.93	104,807,432	7.62
October	22,780,750	4.44	22,504,319	12.51	32,117,212	1.79	105,478,884	7.60
November	23,784,783	4.70	27,223,884	10.52	30,228,876	1.73	92,697,897	7.76
December	17,593,141	4.52	24,035,752	12.53	32,037,513	1.68	76,826,752	7.53
Total/Average	266,215,243	4.44	256,997,085	12.77	424,927,304	1.69	1,311,084,976	7.62

	Shrinkage & Interhandler Difference		Total Class II	
	Product	Butterfat	Product	Butterfat
	pounds	percent	pounds	percent
January	(282,523)	N/A	380,465,250	7.17
February	203,632	N/A	379,622,077	7.41
March	1,583,083	5.25	450,492,152	7.32
April	41,884	N/A	394,528,273	7.60
May	1,033,047	8.62	414,537,715	7.39
June	(94,172)	N/A	430,291,542	7.27
July	(429,513)	19.95	414,703,027	7.87
August	(443,873)	5.86	412,754,775	7.52
September	(246,349)	1.37	389,854,182	7.63
October	(241,185)	4.07	395,618,512	7.78
November	188,836	62.93	386,082,370	8.29
December	(245,763)	N/A	361,855,952	8.25
Total/Average	1,067,104	15.44	4,810,805,827	7.63

* Includes sales to nonpool manufacturing plants.

** Includes sales to other order plants, partially regulated plants, exempt plants, producer-handlers, and nonpool receipts at pool plants.
N/A = Not applicable.

24 Class III Use of Fluid Milk Products and Cream at Pool Plants*, 2004

	Nonpool Bulk and Condensed Products**		American-Type Cheeses		Cream Cheese		Italian-Type Cheeses	
	Product	Butterfat	Product	Butterfat	Product	Butterfat	Product	Butterfat
	pounds	percent	pounds	percent	pounds	percent	pounds	percent
January	26,592,170	2.85	170,402,411	3.66	41,971,183	11.63	273,881,918	3.17
February	24,284,967	2.48	162,007,608	3.60	47,095,922	11.35	278,827,542	3.16
March	38,800,095	2.64	167,225,339	3.62	60,311,390	10.95	300,860,995	3.18
April	15,309,644	4.09	139,882,810	3.57	26,583,838	16.03	221,006,110	3.24
May	1,846,816	5.67	141,556,411	3.46	22,379,479	17.59	198,065,096	3.26
June	2,251,418	2.85	136,845,326	3.48	22,976,180	16.36	199,133,906	3.16
July	12,857,472	1.31	168,900,955	3.43	45,151,475	9.75	257,568,033	3.13
August	246,539	29.65	145,140,699	3.38	56,037,390	10.11	239,571,089	3.19
September	2,424,156	8.06	135,495,953	3.52	56,404,037	9.12	197,401,266	3.09
October	1,215,458	7.57	149,813,831	3.56	61,814,958	8.67	201,851,129	3.33
November	2,189,158	5.21	136,873,247	3.59	57,695,427	8.89	204,372,140	3.39
December	2,052,971	2.71	145,550,439	3.61	48,518,151	10.12	210,042,493	3.36
Total/Average	130,070,864	6.26	1,799,695,029	3.54	546,939,430	11.71	2,782,581,717	3.22

	Swiss and Other-Type Cheeses		Shrinkage & Interhandler Difference		Total Class III	
	Product	Butterfat	Product	Butterfat	Product	Butterfat
	pounds	percent	pounds	percent	pounds	percent
January	19,537,698	3.82	(95,365)	41.73	532,290,015	3.99
February	20,610,431	3.89	14,940,733	4.12	547,767,203	4.02
March	24,280,793	3.67	6,865	38.27	591,485,477	4.08
April	16,649,832	3.97	7,327	75.26	419,439,561	4.23
May	19,395,587	5.56	(10,953)	29.48	383,232,436	4.30
June	16,856,291	5.87	(166,668)	3.55	377,896,453	4.20
July	20,231,248	3.37	154,704	13.19	504,863,887	3.79
August	20,012,726	3.41	(98,302)	12.32	460,910,141	4.12
September	18,960,823	3.41	(113,650)	41.34	410,572,585	4.10
October	19,680,088	3.39	0	0.00	434,375,464	4.19
November	20,486,952	3.51	53,343	46.89	421,670,267	4.23
December	18,386,743	3.63	61,091	0.83	424,611,888	4.23
Total/Average	235,089,212	3.96	14,739,125	25.58	5,509,115,377	4.12

* Includes sales to nonpool manufacturing plants.

** Includes sales to other order plants, partially regulated plants, exempt plants, producer-handlers, and nonpool receipts at pool plants.

25 Class IV Use of Fluid Milk Products and Cream at Pool Plants*, 2004

	Nonpool Bulk**		Condensed Products		Butter		Dried Milk Products	
	Product	Butterfat	Product	Butterfat	Product	Butterfat	Product	Butterfat
	pounds	percent	pounds	percent	pounds	percent	pounds	percent
January	3,737,761	16.30	***	***	19,678,569	48.49	142,754,699	0.55
February	4,618,532	9.76	***	***	17,369,803	44.80	136,848,383	0.57
March	5,133,847	6.08	***	***	15,754,575	52.93	120,880,564	0.48
April	5,690,630	13.18	***	***	18,168,976	52.85	211,991,866	0.60
May	6,685,339	12.44	33,968,224	2.86	17,320,624	55.32	265,035,117	0.31
June	2,795,762	12.70	33,179,009	2.93	16,008,893	50.15	213,580,946	0.21
July	3,433,262	8.82	29,657,586	2.83	10,908,161	55.20	202,971,861	0.21
August	5,408,912	11.27	19,664,462	2.42	10,050,267	47.99	138,107,623	0.24
September	5,363,175	13.87	16,437,140	2.80	9,941,403	44.80	74,199,558	0.65
October	4,876,801	12.91	18,915,533	2.48	8,168,887	50.28	49,634,218	0.77
November	2,010,034	16.67	20,091,348	2.77	8,416,232	48.57	58,313,038	1.02
December	4,705,774	18.76	25,546,826	2.66	16,613,616	50.67	162,579,012	0.30
Total/Average	54,459,829	12.73	197,460,128	2.72	168,400,006	50.17	1,776,896,885	0.49

	Shrinkage and Interhandler Difference		Ending Inventory		Skim Equivalent of NFMS to Fortify Class I		Total Class IV	
	Product	Butterfat	Product	Butterfat	Product	Butterfat	Product	Butterfat
	pounds	percent	pounds	percent	pounds	percent	pounds	percent
January	17,466,255	4.37	62,963,459	6.46	7,235,695	0.07	253,836,438	6.21
February	22,881	N/A	79,012,935	5.56	4,999,018	0.09	242,871,552	5.51
March	16,596,396	4.16	74,168,923	5.69	6,291,920	0.11	238,826,225	5.92
April	17,159,628	3.84	57,730,540	7.29	6,182,068	0.04	316,923,708	5.21
May	20,238,380	3.44	81,813,067	5.78	6,194,097	0.04	431,254,848	4.09
June	16,312,741	4.09	80,148,214	4.85	7,088,140	0.11	369,113,705	3.89
July	20,344,760	3.46	66,982,416	6.32	7,114,402	0.05	341,412,448	3.67
August	18,834,217	3.57	74,775,128	5.81	9,053,011	0.51	275,893,620	4.10
September	15,939,771	3.93	64,621,906	5.71	8,011,551	0.29	194,514,504	5.39
October	15,427,958	4.12	84,695,815	5.71	8,903,152	0.06	190,622,364	5.80
November	15,652,669	4.71	70,433,773	5.98	8,809,101	0.04	183,726,195	5.73
December	16,619,149	3.52	68,341,294	6.84	8,234,819	0.04	302,640,490	5.20
Total/Average	190,614,805	3.93	865,687,470	6.00	88,116,974	0.12	3,341,636,097	5.06

* Includes sales to nonpool manufacturing plants.

** Includes sales to other order plants, partially regulated plants, exempt plants, producer-handlers, and nonpool receipts at pool plants.

*** Previously classified as Class III.

N/A = Not applicable.

26 Minimum Price Class Use and Total Utilization at Pool Plants, 2004

	Total Minimum* Price Class Utilization		Total Utilization by Pool Plants	
	Product	Butterfat	Product	Butterfat
	pounds	percent	pounds	percent
January	7,274,856	2.77	2,204,793,118	3.89
February	10,077,798	3.06	2,100,248,874	3.93
March	7,201,401	2.80	2,314,707,068	3.98
April	6,674,691	2.68	2,120,727,978	3.97
May	8,065,800	3.49	2,195,469,197	3.83
June	7,068,964	2.69	2,098,536,416	3.82
July	7,845,425	3.37	2,221,549,687	3.78
August	7,428,517	2.76	2,109,792,943	3.84
September	7,308,283	2.97	2,005,745,558	3.85
October	7,512,835	2.91	2,055,459,038	3.95
November	6,656,266	3.16	2,016,263,731	4.07
December	7,575,342	2.87	2,133,197,000	4.01
Total/Average	90,690,178	2.96	25,576,490,608	3.91

* Used in animal feed and dumpage.

27 Number of Handlers*, 2004

	<u>Pool Handlers</u>	<u>Producer- Handlers</u>	<u>Partially Regulated Handlers**</u>	<u>Less handlers having plants in more than one category</u>	<u>Total</u>
January	64	15	68	(7)	140
February	67	14	65	(7)	139
March	66	15	65	(7)	139
April	66	15	65	(7)	139
May	67	15	66	(7)	141
June	67	16	64	(6)	141
July	67	11	68	(7)	139
August	68	12	67	(7)	140
September	67	11	68	(7)	139
October	67	14	64	(7)	138
November	65	14	64	(7)	136
December	66	13	65	(8)	136
Average	66	14	66	(7)	139

* Does not include milk route operators, subdealers, vendors, or peddlers who do not operate plants.

** Includes exempt distributing plants pursuant to Section 1000.8(e) and other federal order plants with route disposition in marketing area.

28 Number of Pool Plants*, 2004

	<u>Distributing Plants</u>	<u>Supply Plants</u>	<u>Total</u>
January	64	11	75
February	66	11	77
March	65	11	76
April	64	13	77
May	64	13	77
June	64	13	77
July	65	13	78
August	66	13	79
September	65	13	78
October	65	13	78
November	64	13	77
December	64	13	77
Average	65	13	77

* Includes cooperative associations' plants in the marketing area.

Plant Classification Information, 2004

Plant Name	City	State	Class I Differential	Jan	Feb	Mar	Apr	May	Jun	Jul	Aug	Sep	Oct	Nov	Dec
Pool Distributing Plants:															
A.B. Munroe Dairy, Inc.	E. Providence	RI	3.25	X	X	X	X	X	X	X	X	X	X	X	X
Boice Brothers Dairy, Inc.	Kingston	NY	2.80	X	X	X	X	X	X	X	X	X	X	X	X
Byrne Dairy Inc.	Syracuse	NY	2.50	X	X	X	X	X	X	X	X	X	X	X	X
California Natural Products - Georgia	Savannah	GA	3.45								X				
Clover Farms Dairy Company	Reading	PA	2.80	X	X	X	X	X	X	X	X	X	X	X	X
Cloverland/Green Spring Dairy	Baltimore	MD	3.00	X	X	X	X	X	X	X	X	X	X	X	X
Crescent Ridge Dairy, Inc.	Sharon	MA	3.25												
Crowley Foods, LLC	Albany	NY	2.70	X	X	X	X	X	X	X	X	X	X	X	X
Crowley Foods, LLC	Arkport	NY	2.30	X	X	X	X	X	X	X	X	X	X	X	X
Crowley Foods, LLC	Binghamton	NY	2.70	X	X	X	X	X	X	X	X	X	X	X	X
Crowley Foods, LLC	Philadelphia	PA	3.05	X	X	X	X	X	X	X	X	X	X	X	X
Cumberland Dairy, Inc.	Bridgeton	NJ	3.05	X	X	X	X	X	X	X	X	X	X	X	X
Dairy Maid Dairy, Inc.	Frederick	MD	2.90	X	X	X	X	X	X	X	X	X	X	X	X
Dannon Company, Inc., The	West Jordan	UT	1.90	X	X	X	X	X	X	X	X	X	X	X	X
Dutch Valley Food Company, Inc.	Sunbury	PA	2.70	X	X	X	X	X	X	X	X	X	X	X	X
Elmhurst Dairy, Inc.	Jamaica	NY	3.15	X	X	X	X	X	X	X	X	X	X	X	X
Emerald Farms	New Bedford	MA	3.25	X	X	X	X	X	X	X	X	X	X	X	X
Fresh Made, Inc.	Philadelphia	PA	3.05	X	X	X	X	X	X	X	X	X	X	X	X
Garelick Farms, Inc.	Bangor	ME	2.80	X	X	X	X	X	X	X	X	X	X	X	X
Garelick Farms, Inc.	E. Greenbush	NY	2.70	X	X	X	X	X	X	X	X	X	X	X	X
Garelick Farms, Inc.	Florence	NJ	3.05	X	X	X	X	X	X	X	X	X	X	X	X
Garelick Farms, Inc.	Franklin	MA	3.25	X	X	X	X	X	X	X	X	X	X	X	X
Garelick Farms, Inc.	Lynn	MA	3.25	X	X	X	X	X	X	X	X	X	X	X	X
Giant Food, Inc.	Landover	MD	3.00	X	X	X	X	X	X	X	X	X	X	X	X
Guida-Seibert Dairy Co.	New Britain	CT	3.15	X	X	X	X	X	X	X	X	X	X	X	X
Halo Farm, Inc.	Trenton	NJ	3.10	X	X	X	X	X	X	X	X	X	X	X	X
Harrisburg Dairies Inc	Harrisburg	PA	2.80	X	X	X	X	X	X	X	X	X	X	X	X
Hermany Farms, Inc.	Bronx	NY	3.15	X	X	X	X	X	X	X	X	X	X	X	X
HP Hood LLC	Agawam	MA	3.00	X	X	X	X	X	X	X	X	X	X	X	X
HP Hood LLC	Barre	VT	2.60	X	X	X	X	X	X	X	X	X	X	X	X
HP Hood LLC	Concord	NH	3.00	X	X	X	X	X	X	X	X	X	X	X	X
HP Hood LLC	Oneida	NY	2.50	X	X	X	X	X	X	X	X	X	X	X	X
HP Hood LLC	Portland	ME	3.00	X	X	X	X	X	X	X	X	X	X	X	X
HP Hood LLC	Suffield	CT	3.15	X	X	X	X	X	X	X	X	X	X	X	X
HP Hood LLC	Vernon	NY	2.50	X	X	X	X	X	X	X	X	X	X	X	X
HP Hood LLC	Winchester	VA	2.80	X	X	X	X	X	X	X	X	X	X	X	X
Hy-Point Dairy Farms, Inc.	Wilmington	DE	3.05	X	X	X	X	X	X	X	X	X	X	X	X
Kemps Foods, Inc.	Lancaster	PA	2.90	X	X	X	X	X	X	X	X	X	X	X	X
Leonards, Stewart J Dairy	Norwalk	CT	3.15	X	X	X	X	X	X	X	X	X	X	X	X
Lewes Dairy, Inc.	Lewes	DE	3.05	X	X	X	X	X	X	X	X	X	X	X	X
Lewis County Dairy Corp.	Lowville	NY	2.30	X	X	X	X	X	X	X	X	X	X	X	X

(Continued on following page)

Plant Classification Information, 2004 (Continued)

Plant Name	City	State	Class I Differential	Jan	Feb	Mar	Apr	May	Jun	Jul	Aug	Sep	Oct	Nov	Dec
Pool Distributing Plants (continued):															
Longacre's Modern Dairy, Inc.	Barto	PA	2.80	X	X	X	X	X	X	X	X	X	X	X	X
Marcus Dairy, Incorporated	Danbury	CT	3.15	X	X	X	X	X	X	X	X	X	X	X	X
Midland Farms, Inc.	Menands	NY	2.70	X	X	X	X	X	X	X	X	X	X	X	X
Morningstar Foods Inc.	Fraser	NY	2.70	X	X	X	X	X	X	X	X	X	X	X	X
Morningstar Foods Inc.	Mt. Crawford	VA	2.80	X	X	X	X	X	X	X	X	X	X	X	X
Oak Tree Farm Dairy, Inc.	E. Northport	NY	3.15	X	X	X	X	X	X	X	X	X	X	X	X
Oakhurst Dairy	Portland	ME	3.00	X	X	X	X	X	X	X	X	X	X	X	X
Old Home Foods, Inc.	St. Paul	MN	1.70	X	X	X	X	X	X	X	X	X	X	X	X
Orin Thomas and Sons Incorporated dba Thomas Dairy	Rutland	VT	2.60	X	X	X	X	X	X	X	X	X	X	X	X
Parmalat/Farmland (DIP)	Wallington	NJ	3.15	X	X	X	X	X	X	X	X	X	X	X	X
Parmalat/Sunnydale (DIP)	Brooklyn	NY	3.15	X	X	X	X	X	X	X	X	X	X	X	X
Pioneer Dairy, Inc.	Southwick	MA	3.00	X	X	X	X	X	X	X	X	X	X	X	X
Readington Farms, Inc.	Whitehouse	NJ	3.10	X	X	X	X	X	X	X	X	X	X	X	X
Ready Food Products, Inc.	Philadelphia	PA	3.05	X	X	X	X	X	X	X	X	X	X	X	X
Richfood, Inc.	Richmond	VA	3.10	X	X	X	X	X	X	X	X	X	X	X	X
Rosenberger's Dairies, LLC	Hatfield	PA	3.05	X	X	X	X	X	X	X	X	X	X	X	X
Rutter Bros. Dairy, Inc.	York	PA	2.90	X	X	X	X	X	X	X	X	X	X	X	X
Schneider - Valley Farms, Inc.	Williamsport	PA	2.50	X	X	X	X	X	X	X	X	X	X	X	X
Shenandoah's Pride, LLC	Springfield	VA	3.00	X	X	X	X	X	X	X	X	X	X	X	X
Steuben Foods, Incorporated	Elma	NY	2.20	X	X	X	X	X	X	X	X	X	X	X	X
Stewart's Processing Corp.	Greenfield Center	NY	2.70	X	X	X	X	X	X	X	X	X	X	X	X
Swiss Premium Dairy Div. of Dean Foods, Inc.	Lebanon	PA	2.80	X	X	X	X	X	X	X	X	X	X	X	X
Turkey Hill Dairy	Conestoga	PA	2.90	X	X	X	X	X	X	X	X	X	X	X	X
Tuscan/Lehigh Dairies, Inc.	Lansdale	PA	3.05	X	X	X	X	X	X	X	X	X	X	X	X
Tuscan/Lehigh Dairies, Inc.	Union	NJ	3.15	X	X	X	X	X	X	X	X	X	X	X	X
Upstate Farms Cooperative, Inc.	Rochester	NY	2.30	X	X	X	X	X	X	X	X	X	X	X	X
Wawa Dairy Farms	Wawa	PA	3.05	X	X	X	X	X	X	X	X	X	X	X	X
Wengert's Dairy, Inc.	Lebanon	PA	2.80	X	X	X	X	X	X	X	X	X	X	X	X
Worcester Creameries Corp.	Roxbury	NY	2.70	X	X	X	X	X	X	X	X	X	X	X	X
Z&R Corp. dba Mohawk Dairy	Amsterdam	NY	2.70	X	X	X	X	X	X	X	X	X	X	X	X
Pool Supply Plants:															
Agri-Mark, Inc.	Cabot	VT	2.60	X	X	X	X	X	X	X	X	X	X	X	X
Agri-Mark, Inc.	Chateaugay	NY	2.30	X	X	X	X	X	X	X	X	X	X	X	X
Agri-Mark, Inc.	Middlebury	VT	2.60	X	X	X	X	X	X	X	X	X	X	X	X
Agri-Mark, Inc.	W. Springfield	MA	3.00	X	X	X	X	X	X	X	X	X	X	X	X
Dairy Marketing Services, LLC	Reading	PA	2.80	X	X	X	X	X	X	X	X	X	X	X	X
Dietrich's Milk Products LLC	Middlebury Center	PA	2.50	X	X	X	X	X	X	X	X	X	X	X	X
Emkay Trading Corporation	Arcade	NY	2.20	X	X	X	X	X	X	X	X	X	X	X	X
Fleur De Lait Foods Ltd.	New Holland	PA	2.90	X	X	X	X	X	X	X	X	X	X	X	X
Land O'Lakes, Inc.	Mt. Holly Springs	PA	2.80	X	X	X	X	X	X	X	X	X	X	X	X
Maryland and Virginia Milk Producers Cooperative, Inc.	Laurel	MD	3.00	X	X	X	X	X	X	X	X	X	X	X	X

(Continued on following page)

Plant Classification Information, 2004 (Continued)

Plant Name	City	State	Class I Differential	Jan	Feb	Mar	Apr	May	Jun	Jul	Aug	Sep	Oct	Nov	Dec
Pool Supply Plants (continued):															
Queensboro Farm Products, Inc.	Canastota	NY	2.50	X	X	X	X	X	X	X	X	X	X	X	X
St. Albans Cooperative Creamery, Inc.	St. Albans	VT	2.40	X	X	X	X	X	X	X	X	X	X	X	X
Ultra Dairy, LLC	E. Syracuse	NY	2.50												
Producer-Handlers:															
Aurora Organic Dairy	Platteville	CO	2.45										X	X	X
Bodwell Processing LLC	Salem Depot	NH	3.00	X	X	X	X	X	X	X	X	X	X	X	X
Crescent Ridge Dairy, Inc.	Sharon	MA	3.25	X	X	X	X	X	X	X	X	X	X	X	X
Dunajski Dairy, Inc.	Peabody	MA	3.25	X	X	X	X	X	X	X	X	X	X	X	X
Dutchway Farm Market, Inc.	Myerstown	PA	2.80	X	X	X	X	X	X	X	X	X	X	X	X
Hatchland Dairy	N. Haverhill	NH	2.60	X	X	X	X	X	X	X	X	X	X	X	X
High Lawn Farm, LLC	Lee	MA	2.80	X	X	X	X	X	X	X	X	X	X	X	X
Kreider Dairy Farms, Inc.	Manheim	PA	2.90	X	X	X	X	X	X	X	X	X	X	X	X
Maplehofo Dairy, Inc.	Quarryville	PA	2.90	X	X	X	X	X	X	X	X	X	X	X	X
McNamara, Patrick/McNamara's Dairy	Plainfield	NH	2.80	X	X	X	X	X	X	X	X	X	X	X	X
Monument Farms, Inc.	Weybridge	VT	2.60	X	X	X	X	X	X	X	X	X	X	X	X
Perrydell Farm	York	PA	2.90	X	X	X	X	X	X	X	X	X	X	X	X
Richardson's Farms, Inc.	Middleton	MA	3.25	X	X	X	X	X	X	X	X	X	X	X	X
Tanner Brothers & Sons, Inc.	Ivyland	PA	3.05	X	X	X	X	X	X	X	X	X	X	X	X
Whittier Farms, Inc.	Shrewsbury	MA	3.10	X	X	X	X	X	X	X	X	X	X	X	X
Willard J. Stearns & Sons, Inc. dba Mountain Dairy	Storrs	CT	3.15	X	X	X	X	X	X	X	X	X	X	X	X
Wright's Dairy Farm, Inc.	N. Smithfield	RI	3.25	X	X	X	X	X	X	X	X	X	X	X	X
Exempt Distributing Plants:															
Bayside State Prison	Leesburg	NJ	3.05	X	X	X	X	X	X	X	X	X	X	X	X
California Natural Products - Georgia	Savannah	GA	3.45												
Christiansen Dairy Company	N. Providence	RI	3.25	X	X	X	X	X	X	X	X	X	X	X	X
Chrome Dairy Farms	Oxford	PA	3.05	X	X	X	X	X	X	X	X	X	X	X	X
Coopers Hilltop Farm	Rochdale	MA	3.10	X	X	X	X	X	X	X	X	X	X	X	X
Cornell University Dept. of Food Science	Ithaca	NY	2.50	X	X	X	X	X	X	X	X	X	X	X	X
Donald J. Bangma Dairy	Uxbridge	MA	3.10	X	X	X	X	X	X	X	X	X	X	X	X
Dutchway Farm Market, Inc.	Myerstown	PA	2.80	X	X	X	X	X	X	X	X	X	X	X	X
Emerald Farms	New Bedford	MA	3.25	X	X	X	X	X	X	X	X	X	X	X	X
Emmons Willowbrook Farm, Inc.	Pemberton	NJ	3.05	X	X	X	X	X	X	X	X	X	X	X	X
Fish Family Farm, Inc.	Bolton	CT	3.15	X	X	X	X	X	X	X	X	X	X	X	X
Freddy-Hill Farms	Lansdale	PA	3.05	X	X	X	X	X	X	X	X	X	X	X	X
H E Heindel & Sons dba The Brown Cow Country Market	Brogue	PA	2.90	X	X	X	X	X	X	X	X	X	X	X	X
Jean Moniz, dba Arruda's Dairy Farm	Tiverton	RI	3.25	X	X	X	X	X	X	X	X	X	X	X	X
Kolbs Farm Store	Spring City	PA	3.05	X	X	X	X	X	X	X	X	X	X	X	X
Lapp Valley Farm	New Holland	PA	2.90	X	X	X	X	X	X	X	X	X	X	X	X
Manino, Samuel A. dba Dairy-Del Dairy	Frankfort	NY	2.50	X	X	X	X	X	X	X	X	X	X	X	X

(Continued on following page)

Plant Classification Information, 2004 (Continued)

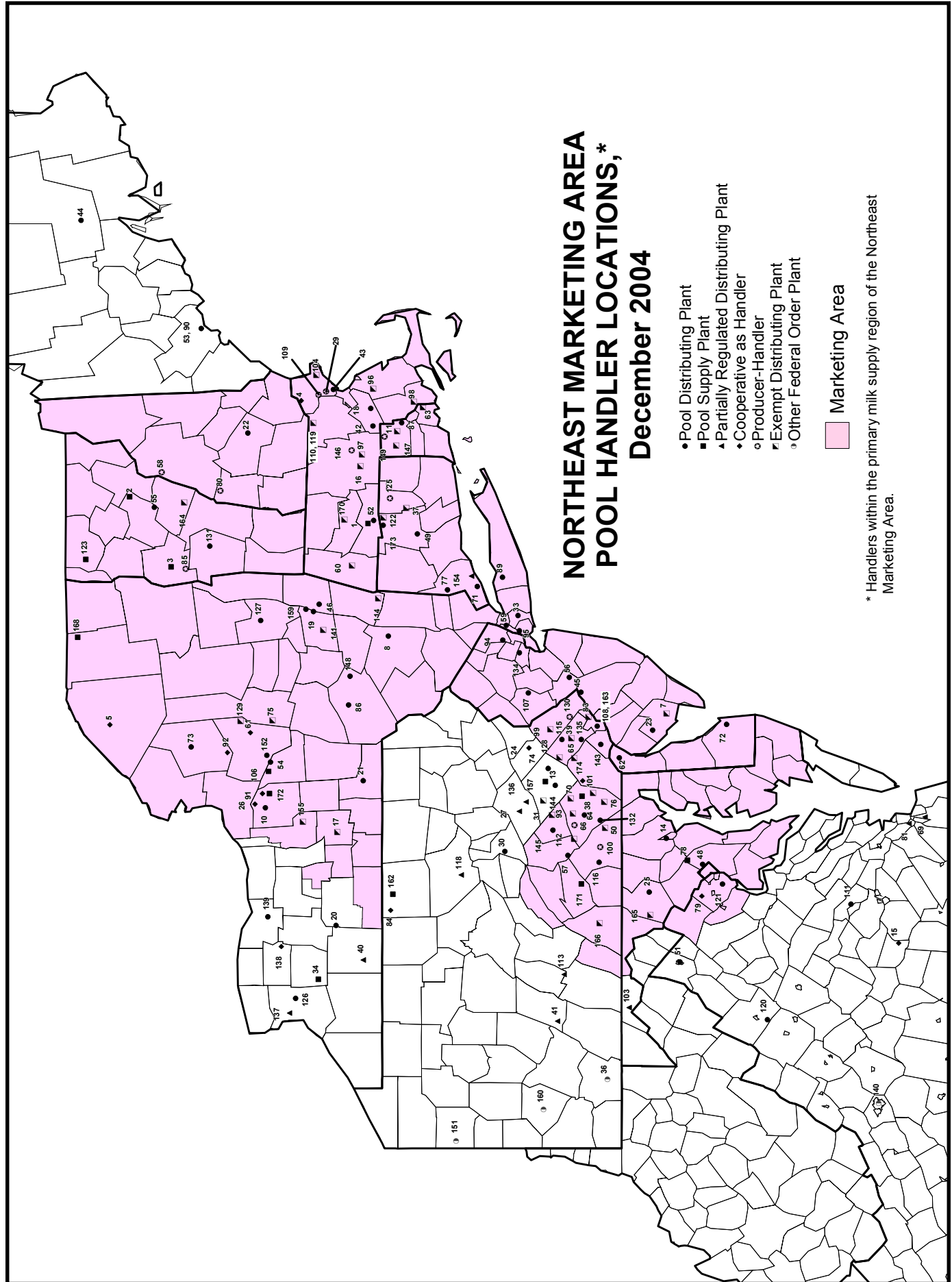
Plant Name	City	State	Class I Differential	Jan	Feb	Mar	Apr	May	Jun	Jul	Aug	Sep	Oct	Nov	Dec
Exempt Distributing Plants (continued):															
Mapleholfe Dairy, Inc.	Quarryville	PA	2.90			X		X		X	X	X	X	X	X
Mapleline Farm Home Delivery Service, Inc.	Hadley	MA	3.00			X		X	X	X	X	X	X	X	X
Martin, Nevin L LLC dba Hillcrest Dairy	Moravia	NY	2.30	X		X	X	X	X	X	X	X	X	X	X
Merrymeade Farm, Inc.	Lansdale	PA	3.05	X	X	X	X	X	X	X	X	X	X	X	X
Oregon Dairy	Lititz	PA	2.90	X	X	X	X	X	X	X	X	X	X	X	X
Peaceful Meadows Ice Cream, Inc.	Whitman	MA	3.25	X	X	X	X	X	X	X	X	X	X	X	X
Pearson, Robert L. dba Elmhurst Dairy	W. Millbury	MA	3.10	X	X	X	X	X	X	X	X	X	X	X	X
Pedro, Joseph dba Pedro's Dairy Farm	Fall River	MA	3.25	X	X	X	X	X	X	X	X	X	X	X	X
Penn View Farm	Perkasie	PA	3.05	X	X	X	X	X	X	X	X	X	X	X	X
Perrydell Farm	York	PA	2.90	X	X	X	X	X	X	X	X	X	X	X	X
Pine View Acres, Inc.	Lancaster	PA	2.90	X	X	X	X	X	X	X	X	X	X	X	X
Puleo's Dairy	Salem	MA	3.25	X	X	X	X	X	X	X	X	X	X	X	X
Quality Milk, Inc.	Ware	MA	3.00	X	X	X	X	X	X	X	X	X	X	X	X
Richardson, G.H. Dairy	Dracut	MA	3.25	X	X	X	X	X	X	X	X	X	X	X	X
Ridge View Farms, Inc.	Elizabethtown	PA	2.90	X	X	X	X	X	X	X	X	X	X	X	X
Ronnybrook Farm Dairy, Inc.	Ancramdale	NY	2.70	X	X	X	X	X	X	X	X	X	X	X	X
S.B. Winsor Dairy, Inc.	Johnston	RI	3.25	X	X	X	X	X	X	X	X	X	X	X	X
Shaw Farm Dairy, Inc.	Dracut	MA	3.25	X	X	X	X	X	X	X	X	X	X	X	X
Smyth, Michael E. dba Trinity Farm	Enfield	CT	3.15	X	X	X	X	X	X	X	X	X	X	X	X
South Mountain Creamery, L.L.C.	Middletown	MD	2.90	X	X	X	X	X	X	X	X	X	X	X	X
Strafford Organic Creamery	Stratford	VT	2.60	X	X	X	X	X	X	X	X	X	X	X	X
Suloman's Milk	Gilbertsville	PA	3.05	X	X	X	X	X	X	X	X	X	X	X	X
Synakowski, Walter J & Daniel S dba Valley Side Farm	Remsen	NY	2.50	X	X	X	X	X	X	X	X	X	X	X	X
Trickling Springs Creamery LLC	Chambersburg	PA	2.80	X	X	X	X	X	X	X	X	X	X	X	X
Van Wie, Charles F. dba Meadowbrook Farms Dairy	Clarksville	NY	2.70	X	X	X	X	X	X	X	X	X	X	X	X
Way-Har Farms	Bernville	PA	2.80	X	X	X	X	X	X	X	X	X	X	X	X
Partially Regulated Plants:															
Cacique, Inc.	City of Industry	CA	2.10			X		X		X	X	X	X	X	X
Dan-Ed Corporation, T/A Guers Dairy	Pottsville	PA	2.80	X	X	X	X	X	X	X	X	X	X	X	X
Dannon Company, Inc., The	Fort Worth	TX	3.00	X	X	X	X	X	X	X	X	X	X	X	X
Dannon Company, Inc., The	West Jordan	UT	1.90			X	X	X	X	X	X	X	X	X	X
Friendship Dairies, Inc.	Friendship	NY	2.30	X	X	X	X	X	X	X	X	X	X	X	X
Galliker Dairy Company	Johnstown	PA	2.30	X	X	X	X	X	X	X	X	X	X	X	X
Gossner Foods, Inc.	Logan	UT	1.90			X	X	X	X	X	X	X	X	X	X
Jasper Products, L.L.C.	Joplin	MO	2.20	X	X	X	X	X	X	X	X	X	X	X	X
Kohler Mix Specialties, LLC	Newington	CT	3.15	X	X	X	X	X	X	X	X	X	X	X	X
Kohler Mix Specialties, LLC	White Bear Lake	MN	1.70	X	X	X	X	X	X	X	X	X	X	X	X
Land-O-Sun Dairies, LLC	Portsmouth	VA	3.20	X	X	X	X	X	X	X	X	X	X	X	X
Marva Maid Dairy	Newport News	VA	3.20	X	X	X	X	X	X	X	X	X	X	X	X
Milk Products of Alabama, LLC	Decatur	AL	3.45	X	X	X	X	X	X	X	X	X	X	X	X
Morningstar Foods Inc.	Gustine	CA	1.70	X	X	X	X	X	X	X	X	X	X	X	X

(Continued on following page)

Plant Classification Information, 2004 (Continued)

Plant Name	City	State	Class I Differential	Jan	Feb	Mar	Apr	May	Jun	Jul	Aug	Sep	Oct	Nov	Dec
Partially Regulated Plants (continued) :															
Potomac Farms Dairy	Cumberland	MD	2.60	X	X	X	X	X	X	X	X	X	X	X	X
Ready Food Products, Inc.	Philadelphia	PA	3.05	X											
Ritchey's Dairy, Inc.	Martinsburg	PA	2.30	X	X	X	X	X	X	X	X	X	X	X	X
Tuscan/Lehigh Dairies, Inc.	Schuylkill Haven	PA	2.80	X	X	X	X	X	X	X	X	X	X	X	X
Upstate Farms Cooperative, Inc.	Buffalo	NY	2.20	X	X	X	X	X	X	X	X	X	X	X	X
Section 1000.9 (c) Handlers:															
Agri-Mark, Inc.	Methuen	MA		X	X	X	X	X	X	X	X	X	X	X	X
Allied Federated Co-ops, Inc.	Canton	NY		X	X	X	X	X	X	X	X	X	X	X	X
Cooperative Milk Producers Association	Blackstone	VA		X	X	X	X	X	X	X	X	X	X	X	X
Cumberland Valley Milk Producers	Allentown	PA		X	X	X	X	X	X	X	X	X	X	X	X
Dairy Farmers of America, Inc.	Henderson	CO		X	X	X	X	X	X	X	X	X	X	X	X
Dairy Farmers of America, Inc.	Knoxville	TN		X	X	X	X	X	X	X	X	X	X	X	X
Dairy Marketing Services, LLC	Syracuse	NY		X	X	X	X	X	X	X	X	X	X	X	X
H.P. Farmers Cooperative, Inc.	Holland Patent	NY		X	X	X	X	X	X	X	X	X	X	X	X
LANCO-Pennland Quality Milk Producers	Bellevue	FL		X	X	X	X	X	X	X	X	X	X	X	X
Maryland and Virginia Milk Producers Cooperative, Inc.	Reston	VA		X	X	X	X	X	X	X	X	X	X	X	X
Middlebury Cooperative Milk Producers Association	Little Marsh	PA		X	X	X	X	X	X	X	X	X	X	X	X
NFO - Organic	La Farge	WI		X	X	X	X	X	X	X	X	X	X	X	X
Oneida-Lewis Milk Producers Cooperative, Inc.	West Leyden	NY		X	X	X	X	X	X	X	X	X	X	X	X
Oneida-Madison Milk Producers Cooperative Association, Inc.	Syracuse	NY		X	X	X	X	X	X	X	X	X	X	X	X
Steamburg Milk Producers Cooperative, Inc.	Otto	NY		X	X	X	X	X	X	X	X	X	X	X	X
Upstate Farms Cooperative, Inc.	LeRoy	NY		X	X	X	X	X	X	X	X	X	X	X	X
Other Order Plants:															
Aurora Organic Dairy	Platteville	CO	2.45								X	X	X	X	X
Dean Foods Company	Sharpsville	PA	2.10	X	X	X	X	X	X	X	X	X	X	X	X
Fike's Dairy, Inc.	Uniontown	PA	2.30	X	X	X	X	X	X	X	X	X	X	X	X
Gossner Foods, Inc.	Logan	UT	1.90	X	X	X	X	X	X	X	X	X	X	X	X
Hunter Jersey Farms, Inc.	High Point	NC	3.10	X	X	X	X	X	X	X	X	X	X	X	X
Kohler Mix Specialties, LLC	White Bear Lake	MN	1.70	X	X	X	X	X	X	X	X	X	X	X	X
Lifeway Foods, Inc.	Morton Grove	IL	1.80	X	X	X	X	X	X	X	X	X	X	X	X
Milkco, Inc.	Asheville	NC	2.95	X	X	X	X	X	X	X	X	X	X	X	X
Morningstar Foods Inc.	Murray	KY	2.40	X	X	X	X	X	X	X	X	X	X	X	X
Morningstar Foods Inc.	Sulphur Springs	TX	3.00	X	X	X	X	X	X	X	X	X	X	X	X
Parmlat White Knight Packaging	Wyoming	MI	1.80	X	X	X	X	X	X	X	X	X	X	X	X
Pride of Main Street Dairy, LLC	Sauk Centre	MN	1.70	X	X	X	X	X	X	X	X	X	X	X	X
Promised Land Dairy Distribution, Inc.	Floresville	TX	3.45	X	X	X	X	X	X	X	X	X	X	X	X
Safeway, Inc.	Clackamas	OR	1.90	X	X	X	X	X	X	X	X	X	X	X	X
Schneiders Dairy, Inc.	Pittsburgh	PA	2.10	X	X	X	X	X	X	X	X	X	X	X	X
Schroeder Milk Co., Inc.	Maplewood	MN	1.70	X	X	X	X	X	X	X	X	X	X	X	X
United Dairy, Inc.	Uniontown	PA	2.30	X	X	X	X	X	X	X	X	X	X	X	X
Valley Rich	Roanoke	VA	2.80	X	X	X	X	X	X	X	X	X	X	X	X

Note: In months without an 'x' plant may be classified under another category, not pooled under Order No. 1, or not operating.



**NORTHEAST MARKETING AREA
POOL HANDLER LOCATIONS, *
December 2004**

- Pool Distributing Plant
- Pool Supply Plant
- ▲ Partially Regulated Distributing Plant
- ◆ Cooperative as Handler
- ◊ Producer-Handler
- ▴ Exempt Distributing Plant
- ◌ Other Federal Order Plant

■ Marketing Area

* Handlers within the primary milk supply region of the Northeast Marketing Area.

Northeast Marketing Area Pool Handler Locations Index, December 2004

Map Plant No.	Qualified Status*	Plant Name	Plant/Cooperative Location	State	Differential	Adjustment Base Differential
87	PD	A. B. MUNROE DAIRY, INC.	EAST PROVIDENCE	RI	\$3.25	\$0.00
1	PS	AGRI-MARK, INC.	WEST SPRINGFIELD	MA	\$3.00	(\$0.25)
2	PS	AGRI-MARK, INC.	CABOT	VT	\$2.60	(\$0.65)
3	PS	AGRI-MARK, INC.	MIDDLEBURY	VT	\$2.60	(\$0.65)
4	9C	AGRI-MARK, INC.	METHEUN	MA		
168	PS	AGRI-MARK, INC.	CHATEAUGAY	NY	\$2.30	(\$0.95)
5	9C	ALLIED FEDERATED CO-OPS, INC.	CANTON	NY		
7	ED	BAYSIDE STATE PRISON	LEESBURG	NJ	\$3.05	(\$0.20)
8	PD	BOICE BROTHERS DAIRY, INC.	KINGSTON	NY	\$2.80	(\$0.45)
10	PD	BYRNE DAIRY INC.	N. SYRACUSE	NY	\$2.50	(\$0.75)
11	ED	CHRISTIANSEN DAIRY COMPANY	NO. PROVIDENCE	RI	\$3.25	\$0.00
13	PD	CLOVER FARMS DAIRY COMPANY	READING	PA	\$2.80	(\$0.45)
14	PD	CLOVERLAND/GREEN SPRING DAIRY	BALTIMORE	MD	\$3.00	(\$0.25)
15	9C	COOPERATIVE MILK PRODUCERS ASSOCIATION	BLACKSTONE	VA		
16	ED	COOPERS HILLTOP FARM	ROCHDALE	MA	\$3.10	(\$0.15)
17	ED	CORNELL UNIVERSITY DEPT. OF FOOD SCIENCE	ITHACA	NY	\$2.50	(\$0.75)
18	PD	CRESCENT RIDGE DAIRY, INC.	SHARON	MA	\$3.25	\$0.00
19	PD	CROWLEY FOODS, LLC	ALBANY	NY	\$2.70	(\$0.55)
20	PD	CROWLEY FOODS, LLC	ARKPORT	NY	\$2.30	(\$0.95)
21	PD	CROWLEY FOODS, LLC	BINGHAMTON	NY	\$2.70	(\$0.55)
108	PD	CROWLEY FOODS, LLC	PHILADELPHIA	PA	\$3.05	(\$0.20)
23	PD	CUMBERLAND DAIRY, INC.	BRIDGETON	NJ	\$3.05	(\$0.20)
24	9C	CUMBERLAND VALLEY MILK PRODUCERS	ALLENTOWN	PA		
25	PD	DAIRY MAID DAIRY, INC.	FREDERICK	MD	\$2.90	(\$0.35)
26	9C	DAIRY MARKETING SERVICES, LLC	SYRACUSE	NY		
157	PS	DAIRY MARKETING SERVICES, LLC	READING	PA	\$2.80	(\$0.45)
27	PR	DAN-ED CORPORATION, T/A GUERS DAIRY	POTTSVILLE	PA	\$2.80	(\$0.45)
151	OF	DEAN FOODS COMPANY	SHARPSVILLE	PA	\$2.10	(\$1.15)
162	PS	DIETRICH'S MILK PRODUCTS LLC	MIDDLEBURY CENTER	PA	\$2.50	(\$0.75)
29	PH	DUNAJSKI DAIRY, INC.	PEABODY	MA	\$3.25	\$0.00
30	PD	DUTCH VALLEY FOOD COMPANY, INC.	SUNBURY	PA	\$2.70	(\$0.55)
31	ED	DUTCH WAY FARM MARKET, INC.	MYERSTOWN	PA	\$2.80	(\$0.45)
33	PD	ELMHURST DAIRY, INC.	JAMAICA	NY	\$3.15	(\$0.10)
34	PS	EMKAY TRADING CORPORATION	ARCADE	NY	\$2.20	(\$1.05)
37	ED	FISH FAMILY FARM, INC.	BOLTON	CT	\$3.15	(\$0.10)
38	PS	FLEUR DE LAIT FOODS LTD.	NEW HOLLAND	PA	\$2.90	(\$0.35)
39	ED	FREDDY-HILL FARMS	LANSDALE	PA	\$3.05	(\$0.20)
163	PD	FRESH MADE, INC.	PHILADELPHIA	PA	\$3.05	(\$0.20)

(Continued on following page)

Northeast Marketing Area Pool Handler Locations Index, December 2004 *Continued*

Map Plant No.	Qualified Status*	Plant Name	Plant/Cooperative Location	State	Differential	Adjustment	
						Base	Differential
40	PR	FRIENDSHIP DAIRIES, INC.	FRIENDSHIP	NY	\$2.30	(\$0.95)	(\$0.95)
41	PR	GALLIKER DAIRY COMPANY	JOHNSTOWN	PA	\$2.30	(\$0.95)	(\$0.95)
42	PD	GARELICK FARMS, INC.	FRANKLIN	MA	\$3.25	\$0.00	\$0.00
43	PD	GARELICK FARMS, INC.	LYNN	MA	\$3.25	\$0.00	\$0.00
44	PD	GARELICK FARMS, INC.	BANGOR	ME	\$2.80	(\$0.45)	(\$0.45)
45	PD	GARELICK FARMS, INC.	FLORENCE	NJ	\$3.05	(\$0.20)	(\$0.20)
46	PD	GARELICK FARMS, INC.	E. GREENBUSH	NY	\$2.70	(\$0.55)	(\$0.55)
48	PD	GIANT FOOD, INC.	LANDOVER	MD	\$3.00	(\$0.25)	(\$0.25)
49	PD	GUIDA-SEIBERT DAIRY CO.	NEW BRITAIN	CT	\$3.15	(\$0.10)	(\$0.10)
50	ED	H E HEINDEL & SONS D/B/A THE BROWN COW COUNTRY MARKET	BROGUE	PA	\$2.90	(\$0.35)	(\$0.35)
51	PD	HP HOOD LLC	WINCHESTER	VA	\$2.80	(\$0.45)	(\$0.45)
52	PD	HP HOOD LLC	AGAWAM	MA	\$3.00	(\$0.25)	(\$0.25)
53	PD	HP HOOD LLC	PORTLAND	ME	\$3.00	(\$0.25)	(\$0.25)
54	PD	HP HOOD LLC	ONEIDA	NY	\$2.50	(\$0.75)	(\$0.75)
152	PD	HP HOOD LLC	VERNON	NY	\$2.50	(\$0.75)	(\$0.75)
55	PD	HP HOOD LLC	BARRE	VT	\$2.60	(\$0.65)	(\$0.65)
173	PD	HP HOOD LLC	SUFFIELD	CT	\$3.15	(\$0.10)	(\$0.10)
22	PD	HP HOOD LLC	CONCORD	NH	\$3.00	(\$0.25)	(\$0.25)
56	PD	HALO FARM, INC.	TRENTON	NJ	\$3.10	(\$0.15)	(\$0.15)
57	PD	HARRISBURG DAIRIES INC	HARRISBURG	PA	\$2.80	(\$0.45)	(\$0.45)
58	PH	HATCHLAND DAIRY	NO. HAVERHILL	NH	\$2.60	(\$0.65)	(\$0.65)
59	PD	HERMANY FARMS, INC.	BRONX	NY	\$3.15	(\$0.10)	(\$0.10)
60	ED	HIGH LAWN FARM, LLC	LEE	MA	\$2.80	(\$0.45)	(\$0.45)
61	9C	H. P. FARMERS COOPERATIVE, INC.	HOLLAND PATENT	NY			
62	PD	HY-POINT DAIRY FARMS, INC.	WILMINGTON	DE	\$3.05	(\$0.20)	(\$0.20)
63	ED	JEAN MONIZ, D/B/A ARRUDA'S DAIRY FARM	TIVERTON	RI	\$3.25	\$0.00	\$0.00
64	PD	KEMPS FOODS, INC.	LANCASTER	PA	\$2.90	(\$0.35)	(\$0.35)
154	PR	KOHLER MIX SPECIALTIES, LLC	NEWINGTON	CT	\$3.15	(\$0.10)	(\$0.10)
65	ED	KOLBS FARM STORE	SPRING CITY	PA	\$3.05	(\$0.20)	(\$0.20)
66	PH	KREIDER DAIRY FARMS, INC.	MANHEIM	PA	\$2.90	(\$0.35)	(\$0.35)
174	9C	LANCO-PENNLAND QUALITY MILK PRODUCERS	HONEY BROOK	PA			
171	PS	LAND O'LAKES, INC.	MT. HOLLY SPRINGS	PA	\$2.80	(\$0.45)	(\$0.45)
69	PR	LAND-O-SUN DAIRIES, LLC	PORTSMOUTH	VA	\$3.20	(\$0.05)	(\$0.05)
70	ED	LAPP VALLEY FARM	NEW HOLLAND	PA	\$2.90	(\$0.35)	(\$0.35)
72	PD	LEWES DAIRY, INC.	LEWES	DE	\$3.05	(\$0.20)	(\$0.20)
73	PD	LEWIS COUNTY DAIRY CORP.	LOWVILLE	NY	\$2.30	(\$0.95)	(\$0.95)
74	PD	LONGACRE'S MODERN DAIRY, INC.	BARTO	PA	\$2.80	(\$0.45)	(\$0.45)
75	ED	MANINO, SAMUEL A. D/B/A DAIRY-DEL DAIRY	FRANKFORT	NY	\$2.50	(\$0.75)	(\$0.75)

(Continued on following page)

Northeast Marketing Area Pool Handler Locations Index, December 2004 *Continued*

Map Plant No.	Qualified Status*	Plant Name	Plant/Cooperative Location	State	Differential	Adjustment Base Differential
76	ED	MAPLEHOFE DAIRY, INC.	QUARRYVILLE	PA	\$2.90	(\$0.35)
170	ED	MAPLELINE FARM HOME DELIVERY SERVICE, INC.	HADLEY	MA	\$3.00	(\$0.25)
77	PD	MARCUS DAIRY, INCORPORATED	DANBURY	CT	\$3.15	(\$0.10)
155	ED	MARTIN, NEVIN L LLC D/B/A HILLCREST DAIRY	MORAVIA	NY	\$2.30	(\$0.95)
81	PR	MARVA MAID DAIRY	NEWPORT NEWS	VA	\$3.20	(\$0.05)
78	PS	MARYLAND AND VIRGINIA MILK PRODUCERS COOPERATIVE, INC.	LAUREL	MD	\$3.00	(\$0.25)
79	9C	MARYLAND AND VIRGINIA MILK PRODUCERS COOPERATIVE, INC.	RESTON	VA		
80	PH	MARYLAND AND VIRGINIA MILK PRODUCERS COOPERATIVE, INC.	PLAINFIELD	NH	\$2.80	(\$0.45)
83	ED	MCNAMARA, PATRICK/MCNAMARAS DAIRY	LANSDALE	PA	\$3.05	(\$0.20)
84	9C	MERRYMEAD FARM, INC.	LITTLE MARSH	PA		
159	PD	MIDDLEBURY COOPERATIVE MILK PRODUCERS ASSOCIATION	MENANDS	NY	\$2.70	(\$0.55)
85	PH	MIDLAND FARMS, INC.	WEYBRIDGE	VT	\$2.60	(\$0.65)
86	PD	MONUMENT FARMS, INC.	FRASER	NY	\$2.70	(\$0.55)
120	PD	MORNINGSTAR FOODS INC.	FRASER	NY	\$2.80	(\$0.45)
89	PD	MORNINGSTAR FOODS INC.	MT. CRAWFORD	VA	\$3.15	(\$0.10)
90	PD	OAK TREE FARM DAIRY, INC.	EAST NORTHPORT	NY	\$3.00	(\$0.25)
91	9C	OAKHURST DAIRY	PORTLAND	ME		
92	9C	ONEIDA-MADISON MILK PRODUCERS COOPERATIVE ASSOCIATION, INC.	SYRACUSE	NY		
93	ED	ONEIDA-LEWIS MILK PRODUCERS COOPERATIVE, INC.	WEST LEYDEN	NY		
131	PD	OREGON DAIRY, INC.	LITITZ	PA	\$2.90	(\$0.35)
94	PD	ORIN THOMAS AND SONS INCORPORATED D/B/A THOMAS DAIRY	RUTLAND	VT	\$2.60	(\$0.65)
95	PD	PARMALAT/FARMLAND (DIP)	WALLINGTON	NJ	\$3.15	(\$0.10)
96	ED	PARMALAT/SUNNYDALE (DIP)	BROOKLYN	NY	\$3.15	(\$0.10)
97	ED	PEACEFUL MEADOWS ICE CREAM, INC.	WHITMAN	MA	\$3.25	\$0.00
98	ED	PEARSON, ROBERT L. D/B/A ELMHURST DAIRY	WEST MILLBURY	MA	\$3.10	(\$0.15)
99	ED	PEDRO, JOSEPH D/B/A PEDRO'S DAIRY FARM	FALL RIVER	MA	\$3.25	\$0.00
100	PH	PENN VIEW FARM	PERKASIE	PA	\$3.05	(\$0.20)
101	ED	PERRYDELL FARM	YORK	PA	\$2.90	(\$0.35)
103	PR	PINE VIEW ACRES, INC.	LANCASTER	PA	\$2.90	(\$0.35)
104	ED	POTOMAC FARMS DAIRY	CUMBERLAND	MD	\$2.60	(\$0.65)
106	PS	PULEO'S DAIRY	SALEM	MA	\$3.25	\$0.00
107	PD	QUEENSBORO FARM PRODUCTS, INC.	CANASTOTA	NY	\$2.50	(\$0.75)
109	PH	READINGTON FARMS, INC.	WHITEHOUSE	NJ	\$3.10	(\$0.15)
110	ED	RICHARDSON'S FARMS, INC.	MIDDLETON	MA	\$3.25	\$0.00
111	PD	RICHARDSON, G. H. DAIRY	DRACUT	MA	\$3.25	\$0.00
112	ED	RICHFOOD, INC.	RICHMOND	VA	\$3.10	(\$0.15)
113	PR	RIDGE VIEW FARMS, INC.	ELIZABETHTOWN	PA	\$2.90	(\$0.35)
114	ED	RITCHEY'S DAIRY, INC.	MARTINSBURG	PA	\$2.30	(\$0.95)
	ED	RONNYBROOK FARM DAIRY, INC.	ANCRAMDAL	NY	\$2.70	(\$0.55)

(Continued on following page)

Northeast Marketing Area Pool Handler Locations Index, December 2004 *Continued*

Map Plant No.	Qualified Status*	Plant Name	Plant/Cooperative Location	State	Differential	Adjustment Base Differential
115	PD	ROSENBERGER'S DAIRIES, LLC	HATFIELD	PA	\$3.05	(\$0.20)
116	PD	RUTTER BROS. DAIRY, INC.	YORK	PA	\$2.90	(\$0.35)
147	ED	S. B. WINSOR DAIRY, INC.	JOHNSTON	RI	\$3.25	\$0.00
118	PR	SCHNEIDER-VALLEY FARMS, INC.	WILLIAMSPORT	PA	\$2.50	(\$0.75)
160	OF	SCHNEIDER'S DAIRY, INC.	PITTSBURGH	PA	\$2.10	(\$1.10)
119	ED	SHAW FARM DAIRY, INC.	DRACUT	MA	\$3.25	\$0.00
121	PD	SHENANDOAH'S PRIDE, LLC	SPRINGFIELD	VA	\$3.00	(\$0.25)
122	ED	SMYTH, MICHAEL E, D/B/A TRINITY FARM	ENFIELD	CT	\$3.15	(\$0.10)
165	ED	SOUTH MOUNTAIN CREAMERY, L.L.C.	MIDDLETOWN	MD	\$2.90	(\$0.35)
123	PS	ST. ALBANS COOPERATIVE CREAMERY, INC.	ST. ALBANS	VT	\$2.40	(\$0.85)
126	PD	STEUBEN FOODS, INCORPORATED	ELMA	NY	\$2.20	(\$1.05)
71	PD	STEWART J. LEONARD, D/B/A STEW LEONARD'S DAIRY	NORWALK	CT	\$3.15	(\$0.10)
127	PD	STEWART'S PROCESSING CORP.	GREENFIELD	NY	\$2.70	(\$0.55)
164	ED	STRAFFORD ORGANIC CREAMERY	STRAFFORD	VT	\$2.60	(\$0.65)
128	ED	SULOMAN'S MILK	GILBERTSVILLE	PA	\$3.05	(\$0.20)
145	PD	SWISS PREMIUM DAIRY/DIV. OF DEAN FOODS, INC.	LEBANON	PA	\$2.80	(\$0.45)
129	ED	SYNAKOWSKI, WALTER J & DANIEL S D/B/A VALLEY SIDE FARM	REMSEN	NY	\$2.50	(\$0.75)
130	PH	TANNER BROTHERS & SONS, INC.	IVYLAND	PA	\$3.05	(\$0.20)
166	ED	TRICKLING SPRINGS CREAMERY LLC	CHAMBERSBURG	PA	\$2.80	(\$0.45)
132	PD	TURKEY HILL DAIRY	CONESTOGA	PA	\$2.90	(\$0.35)
134	PD	TUSCAN/LEHIGH DAIRIES, INC.	UNION	PA	\$3.15	(\$0.10)
135	PD	TUSCAN/LEHIGH DAIRIES, INC.	LANSDALE	NJ	\$3.05	(\$0.20)
136	PR	TUSCAN/LEHIGH DAIRIES, INC.	SCHUYLKILL HAVEN	PA	\$2.80	(\$0.45)
172	PS	ULTRA DAIRY, LLC	EAST SYRACUSE	NY	\$2.50	(\$0.75)
36	OF	UNITED DAIRY, INC.	UNIONTOWN	PA	\$2.30	(\$0.95)
137	PR	UPSTATE FARMS COOPERATIVE, INC.	BUFFALO	NY	\$2.20	(\$1.05)
138	9C	UPSTATE FARMS COOPERATIVE, INC.	LE ROY	NY	\$2.30	(\$0.95)
139	PD	UPSTATE FARMS COOPERATIVE, INC.	ROCHESTER	NY	\$2.30	(\$0.95)
140	OF	VALLEY RICH	ROANOKE	VA	\$2.80	(\$0.45)
141	ED	VAN WIE, CHARLES F. D/B/A MEADOWBROOK FARMS DAIRY	CLARKSVILLE	NY	\$2.70	(\$0.55)
143	PD	WAWA DAIRY FARMS	WAWA	PA	\$3.05	(\$0.20)
144	ED	WAY-HAR FARMS	BERNVILLE	PA	\$2.80	(\$0.45)
146	PH	WHITTIER FARMS, INC.	SHREWSBURY	MA	\$3.10	(\$0.15)
125	PH	WILLARD J. STEARNS & SONS, INC. D/B/A MOUNTAIN DAIRY	STORRS	CT	\$3.15	(\$0.10)
148	PD	WORCESTER CREAMERIES CORP.	ROXBURY	NY	\$2.70	(\$0.55)
149	PH	WRIGHT'S DAIRY FARM, INC.	NORTH SMITHFIELD	RI	\$3.25	\$0.00

* PD = Pool Distributing Plant, PS = Pool Supply Plant, PR = Partially Regulated Distributing Plant, 9C = Cooperative as Handler, ED = Exempt Distributing Plant, OF = Other Federal Order Plant.

Cooperatives Marketing in the Northeast as of December 31, 2004

Addison Cooperative Milk Producers Association Inc.
 Agri-Mark, Inc.
 Boonville Farms Cooperative, Inc.
 Burke Milk Producers Co-operative Inc.
 Butternut Farms Organic Coop Inc.
 Canajoharie Co-operative Milk Producers, Inc.
 Canton Producers Cooperative, Inc.
 Cape Vincent Milk Producers Cooperative, Inc.
 Cedarville Milk Producers Cooperative, Inc.
 Central Pennsylvania Milk Marketing Cooperative*
 Champlain Milk Producers Cooperative, Inc.
 Conesus Milk Producers Co-operative Inc.
 Cooperative Milk Producers Association
 Cortland Bulk Milk Producers Co-operative Inc.
 Coventry Producers' Cooperative, Inc.
 Cumberland Valley Milk Producers
 Dairy Farmers of America, Inc.
 Dairylea Cooperative Inc.
 Deer River Bulk Co-op, Inc.
 Down State Milk Producers Cooperative Inc.
 Empire-Keystone Milk Producers Cooperative, Inc.
 Farmers Friendly Coop. Inc.*
 Fingerlakes Milk Cooperative Inc.
 Glen Milk Producers Cooperative, Inc.
 Gouverneur Cooperative Dairyman, Inc.
 H. P. Farmers Cooperative, Inc.
 Independent Dairyman's Cooperative
 Association, Inc.
 Interstate Bulk Milk Producers Co-operative, Inc.
 Jefferson Bulk Milk Co-op Inc.
 Konhokton Milk Producers Cooperative
 Association, Inc.
 Lancaster Organic Farmers Cooperative*
 Lanco Dairy Farms Co-Op
 Land O'Lakes, Inc.
 Liberty Valley Cooperative Milk Producers
 Association
 Lisbon Producers Cooperative, Inc.
 Little Falls Milk Producers Coop, Inc.*
 Lowville Producers Dairy Cooperative, Inc.
 Malone Milk Producers Cooperative, Inc.
 Marble City Bulk Milk Co-op. Inc.
 Maryland and Virginia Milk Producers Cooperative
 Association, Inc.

Massachusetts Cooperative Milk Producers
 Federation, Inc.
 Middlebury Cooperative Milk Producers Association
 Mohawk Valley Cooperative, Inc.
 Mount Joy Farmers Cooperative Association, Inc.
 National Farmers Organization
 Niagara Milk Cooperative, Inc.
 North Lawrence Milk Producers Cooperative
 Association, Inc.
 North Penn Bulk Milk Producers Cooperative, Inc.
 Northern New York Bulk Milk Producers
 Cooperative, Inc.
 Northern Tier Farmers Union Milk Producers*
 Oneida-Lewis Milk Producers Cooperative, Inc.
 Oneida-Madison Milk Producers Cooperative
 Association, Inc.
 Organic Dairy Farmers Cooperative, Inc.*
 Owasco Valley Milk Producers Cooperative, Inc.
 Port Allegany Cooperative Milk Producers
 Association
 Preble Milk Cooperative Association, Inc.
 Producers' Co-operative, Inc.
 Progressive Dairyman's Cooperative, Inc.
 Quality Milk Producers Coop., Inc.
 Rock Royal Cooperative, Inc.
 Rockdale Producers Cooperative Association, Inc.
 Scenic Mountain Milk Producers Cooperative Inc.
 Schenevus-Elk Creek Producers Co-op., Inc.
 Schoharie County Cooperative Dairies, Inc.
 Seaway Bulk Milk Producers Coop. Inc.
 South New Berlin Milk Cooperative, Inc.
 Southern Tier Independent Milk Producers
 Co-op, Inc.
 St. Albans Cooperative Creamery, Inc.
 St. Lawrence Valley Bulk Milk Producers Co-
 operative, Inc.
 Sullivan County Co-operative Dairy Association, Inc.
 Tioga Valley Cooperative Bulk Milk Producers
 Association
 Tughill Milk Producers Co-operative, Inc.
 United North Country Bargaining Co-op, Inc.
 Upstate Farms Cooperative, Inc.
 Westco Milk Producers Cooperative

* Cooperative does not have a USDA Capper-Volstead voting determination.

29 Producer Receipts by State and County*, 2004

State and county	January		February		March	
	No. of	Volume	No. of	Volume	No. of	Volume
	producers	of milk 1,000 lbs	producers	of milk 1,000 lbs	producers	of milk 1,000 lbs
Maine						
Androscoggin	38	4,631	38	4,561	38	4,891
Aroostook	10	882	10	727	10	735
Cumberland	15	1,542	15	1,404	15	1,611
Franklin	23	994	22	928	21	1,037
Kennebec	66	11,097	66	10,312	66	11,242
Knox	7	425	7	400	7	413
Lincoln	11	1,139	11	1,085	11	1,089
Oxford	11	1,115	11	1,076	11	1,203
Penobscot	66	11,197	64	10,482	65	11,373
Piscataquis	16	1,458	16	1,368	15	1,490
Sagadahoc	6	321	5	280	5	312
Somerset	59	8,862	60	8,237	59	8,954
Waldo	48	5,057	48	4,907	48	5,286
York	16	1,120	16	1,057	16	1,274
All Other**	1	33	1	46	1	59
Total/Average	393	49,873	390	46,870	388	50,969
Maryland						
Baltimore	20	3,951	20	3,619	21	4,778
Caroline	19	3,781	19	3,631	19	3,950
Carroll	129	15,858	126	15,518	126	16,220
Cecil	35	4,606	33	4,279	33	4,930
Charles	4	153	4	150	3	138
Frederick	115	17,996	115	18,527	116	22,438
Garrett	14	1,208	13	738	13	748
Harford	29	4,163	29	3,923	29	4,243
Kent	25	5,142	26	7,709	26	5,514
Montgomery	7	997	7	950	7	1,119
Queen Anne's	14	1,926	13	1,852	13	2,003
St. Mary's	22	794	22	776	23	940
Talbot	5	565	4	577	4	607
Washington	154	20,915	154	19,643	153	21,704
All Other**	10	1,513	10	1,467	10	1,632
Total/Average	602	83,570	595	83,360	596	90,962
New Jersey						
Burlington	5	1,988	5	1,953	5	2,127
Cumberland	3	503	3	458	3	534
Gloucester	8	1,727	8	1,632	8	1,773
Hunterdon	9	800	9	776	9	891
Ocean	3	196	3	168	3	197
Salem	26	4,256	24	4,020	24	4,425
Sussex	32	3,136	30	2,984	30	3,208
Warren	41	3,136	39	2,932	38	3,260
All Other**	7	809	7	839	7	819
Total/Average	134	16,550	128	15,762	127	17,233
New York						
Albany	15	1,772	15	1,660	14	1,848
Allegany	120	9,402	118	8,976	119	9,638
Broome	65	10,262	60	9,536	61	10,284
Cattaraugus	103	7,548	135	8,127	117	8,278
Cayuga	160	51,671	149	48,291	149	52,065
Chautauqua	30	4,172	37	4,138	29	4,118
Chemung	29	3,737	29	3,609	29	3,830
Chenango	277	21,769	265	20,406	263	22,694
Clinton	144	27,501	142	26,119	140	28,778
Columbia	47	11,356	47	10,600	47	11,580
Cortland	158	21,929	152	20,593	149	22,267
Delaware	185	16,442	175	15,479	175	16,777
Dutchess	27	3,450	27	3,223	29	3,625
Erie	72	10,814	73	10,378	71	11,161
Essex	18	2,511	18	2,325	18	2,509

(Continued on following page)

29 **Producer Receipts by State and County*, 2004** (Continued)

State and county	January		February		March	
	No. of	Volume	No. of	Volume	No. of	Volume
	producers	of milk	producers	of milk	producers	of milk
		1,000 lbs		1,000 lbs		1,000 lbs
New York (continued)						
Franklin	180	23,809	182	22,507	181	24,636
Fulton	47	4,836	46	4,532	45	4,849
Genesee	93	31,716	94	30,165	95	32,853
Greene	31	2,036	31	1,952	32	2,129
Herkimer	205	18,328	203	17,107	198	18,745
Jefferson	304	47,128	303	43,922	301	48,322
Lewis	296	35,773	294	33,551	293	36,634
Livingston	72	25,843	72	24,114	72	25,826
Madison	244	28,491	228	26,224	227	28,397
Monroe	20	5,621	20	5,252	20	5,767
Montgomery	234	23,136	232	21,005	231	23,082
Niagara	8	2,754	8	2,496	8	2,817
Oneida	315	33,132	312	31,298	313	34,196
Onondaga	114	30,234	113	28,349	110	31,061
Ontario	111	26,572	106	24,934	106	27,245
Orange	86	9,835	84	9,688	84	10,084
Orleans	22	3,656	22	3,499	22	3,696
Oswego	75	4,657	75	4,167	74	4,801
Otsego	267	20,672	269	19,523	265	21,225
Rensselaer	76	16,118	77	15,254	77	16,490
Saratoga	46	11,239	46	10,561	46	11,275
Schenectady	11	1,119	10	1,024	10	1,165
Schoharie	97	9,418	94	8,691	94	9,499
Schuyler	24	4,995	24	4,891	25	5,412
Seneca	89	8,822	83	7,983	83	8,756
St. Lawrence	364	46,838	359	43,893	358	48,544
Steuben	243	25,340	244	23,803	244	25,940
Sullivan	44	4,282	44	4,030	44	4,393
Tioga	90	12,016	89	11,437	90	12,268
Tompkins	78	14,053	74	13,130	74	14,181
Ulster	6	583	6	612	6	651
Washington	171	28,908	171	27,981	167	29,841
Wayne	73	12,540	73	11,864	72	12,776
Westchester	3	524	3	473	3	568
Wyoming	182	50,268	181	48,722	181	52,634
Yates	226	15,146	207	14,388	207	15,636
All Other**	1	495	1	494	1	535
Total/Average	5,996	845,271	5,922	796,979	5,869	866,377
Pennsylvania						
Adams	56	6,967	53	7,666	53	12,899
Allegheny	11	793	9	713	9	770
Bedford	140	13,643	136	12,007	121	11,629
Berks	271	34,175	270	32,411	271	35,576
Blair	136	19,658	123	22,341	124	25,737
Bradford	372	33,160	366	31,561	369	34,911
Bucks	21	2,721	21	2,490	21	2,751
Cambria	13	1,865	12	1,639	11	1,825
Centre	117	9,069	100	9,422	97	9,579
Chester	333	32,962	325	31,989	323	35,774
Clearfield	8	491	8	418	8	485
Clinton	105	7,651	79	6,025	81	6,445
Columbia	64	3,856	39	3,631	39	4,133
Crawford	7	737	6	729	6	779
Cumberland	222	25,165	200	23,009	200	24,972
Dauphin	85	7,499	76	7,797	75	8,801
Fayette	19	1,187	19	1,095	19	1,076
Franklin	422	63,755	409	60,291	414	68,319
Fulton	49	5,854	49	5,349	50	5,808
Huntingdon	105	13,090	102	15,265	101	16,973
Indiana	4	268	4	221	3	222
Juniata	129	9,440	124	8,932	125	9,363
Lackawanna	28	1,319	28	1,218	28	1,348

(Continued on following page)

29 Producer Receipts by State and County*, 2004 (Continued)

State and county	January		February		March	
	No. of producers	Volume of milk	No. of producers	Volume of milk	No. of producers	Volume of milk
		1,000 lbs		1,000 lbs		1,000 lbs
Pennsylvania (continued)						
Lancaster	1,972	169,757	1,929	167,680	1,929	187,799
Lebanon	295	39,610	293	37,492	295	41,114
Lehigh	14	2,003	14	1,840	14	2,018
Luzerne	15	835	12	824	12	888
Lycoming	110	7,303	90	6,813	92	7,861
McKean	20	1,169	20	1,075	20	1,238
Mifflin	205	17,960	198	16,845	187	17,069
Montgomery	19	1,872	19	1,766	18	1,924
Montour	40	3,449	35	3,316	35	3,736
Northampton	30	2,883	30	2,723	31	2,950
Northumberland	62	4,895	53	4,624	51	4,911
Perry	114	13,994	108	12,874	110	14,563
Potter	47	8,052	47	7,365	46	7,999
Schuylkill	24	1,690	21	1,683	20	1,598
Snyder	81	5,793	75	5,463	76	5,929
Somerset	73	6,544	72	5,602	72	6,610
Sullivan	23	2,512	23	2,451	21	2,532
Susquehanna	165	12,519	147	11,896	148	13,068
Tioga	187	12,374	179	11,559	180	13,114
Union	163	12,325	140	11,829	140	13,226
Wayne	127	6,904	109	6,323	109	7,104
Wyoming	108	6,892	97	6,477	97	7,269
York	130	12,443	127	11,873	125	13,268
All Other**	21	1,776	24	3,534	21	3,590
Total/Average	6,762	650,877	6,420	630,143	6,397	701,553
Vermont						
Addison	217	53,365	210	51,236	212	55,579
Bennington	13	2,468	13	2,266	13	2,446
Caledonia	103	12,664	102	11,940	102	12,768
Chittenden	64	8,966	63	8,425	60	9,098
Essex	25	4,672	25	4,390	26	4,702
Franklin	282	58,935	281	55,501	280	60,568
Grand Isle	21	4,224	21	3,954	21	4,339
Lamoille	49	5,201	49	4,955	49	5,299
Orange	112	13,743	111	12,789	111	13,794
Orleans	173	27,447	171	25,799	172	27,801
Rutland	108	10,766	107	9,992	106	10,651
Washington	47	6,893	47	6,455	46	7,047
Windham	31	5,469	31	5,091	31	5,670
Windsor	44	3,841	43	3,536	43	3,867
Total/Average	1,289	218,654	1,274	206,328	1,272	223,630
Virginia						
Augusta	14	1,511	14	1,278	14	1,663
Bedford	3	877	3	843	3	946
Clarke	3	857	3	740	3	792
Franklin	20	2,251	21	2,143	21	2,097
Harrisonburg City	20	1,490	29	2,671	21	3,080
Montgomery	4	154	4	222	4	212
Nottoway	4	900	4	804	4	960
Rockingham	78	8,835	69	8,837	72	12,739
All Other**	34	4,747	31	4,396	33	5,106
Total/Average	180	21,621	178	21,936	175	27,594
Other New England States***	544	81,592	531	77,240	527	83,238
Other States****	184	23,323	181	22,688	193	28,687
Grand Total/Average	16,084	1,992,330	15,619	1,901,305	15,544	2,090,243

* Producer receipts data based on audited producer payroll reports. Totals may not add due to rounding.

** Counties with fewer than 3 producers are restricted and have been consolidated into the "all other" category. Some counties had more than 3 producers, but had fewer than 3 handlers pooling milk during the month.

*** Represents restricted data for the states of Connecticut, Massachusetts, New Hampshire, and Rhode Island.

**** Represents restricted data for the states of Delaware, Kentucky, Michigan, Minnesota, Nevada, Ohio, Utah, West Virginia, and Wisconsin.

29 **Producer Receipts by State and County*, 2004** (Continued)

State and county	April		May		June	
	No. of	Volume	No. of	Volume	No. of	Volume
	producers	of milk 1,000 lbs	producers	of milk 1,000 lbs	producers	of milk 1,000 lbs
Maine						
Androscoggin	37	4,748	37	4,876	36	4,554
Aroostook	11	704	11	741	11	807
Cumberland	16	1,545	16	1,628	16	1,572
Franklin	22	1,040	23	1,175	23	1,170
Kennebec	67	11,198	67	11,976	66	11,937
Knox	8	416	7	466	8	453
Lincoln	11	1,088	11	1,188	11	1,152
Oxford	11	1,146	11	1,160	11	1,112
Penobscot	65	11,062	65	11,389	64	11,378
Piscataquis	14	1,446	13	1,442	13	1,433
Sagadahoc	6	303	6	323	6	325
Somerset	60	8,698	58	9,058	58	8,808
Waldo	48	5,223	48	5,604	48	5,486
York	16	1,231	16	1,290	16	1,314
All Other**	1	57	1	58	1	71
Total/Average	393	49,904	390	52,374	388	51,573
Maryland						
Baltimore	21	4,674	21	4,681	20	3,567
Caroline	19	3,684	19	3,797	19	3,457
Carroll	125	16,792	126	17,091	124	14,232
Cecil	32	4,804	31	4,726	31	4,179
Charles	3	130	3	134	3	102
Frederick	120	21,620	116	22,398	116	18,666
Garrett	12	751	12	814	12	731
Harford	27	4,094	27	4,222	27	3,877
Kent	26	8,036	26	8,028	24	4,836
Montgomery	7	1,120	7	1,134	7	1,045
Queen Anne's	13	1,945	13	2,009	13	1,642
St. Mary's	23	889	23	888	23	751
Talbot	4	633	4	598	4	501
Washington	152	21,227	150	21,245	149	19,387
All Other**	10	1,572	10	1,599	10	1,446
Total/Average	594	91,968	588	93,363	582	78,419
New Jersey						
Burlington	5	2,109	5	2,151	5	1,989
Cumberland	3	518	3	527	3	489
Gloucester	8	1,687	8	1,738	8	1,660
Hunterdon	9	864	9	864	9	781
Ocean	3	210	3	213	3	200
Salem	24	4,364	24	4,416	24	4,058
Sussex	30	3,178	32	3,306	30	3,051
Warren	36	3,034	35	3,171	35	2,943
All Other**	7	792	7	847	7	769
Total/Average	125	16,757	126	17,231	124	15,939
New York						
Albany	14	1,825	14	1,919	14	1,881
Allegany	63	5,157	62	5,599	61	5,490
Broome	61	9,965	61	10,135	60	9,781
Cattaraugus	75	6,089	72	6,512	75	6,508
Cayuga	150	50,365	151	51,950	149	52,223
Chautauqua	11	697	11	733	11	724
Chemung	8	518	8	602	8	571
Chenango	264	22,566	263	24,175	261	22,844
Clinton	69	11,136	68	11,611	68	11,248
Columbia	46	11,440	46	12,106	45	11,532
Cortland	148	21,812	147	22,748	148	21,533
Delaware	175	16,443	178	17,485	177	16,287
Dutchess	29	3,683	29	3,778	30	3,543
Erie	64	10,956	64	11,422	64	10,887
Essex	3	579	3	605	6	981

(Continued on following page)

29 Producer Receipts by State and County*, 2004 (Continued)

State and county	April		May		June	
	No. of producers	Volume of milk	No. of producers	Volume of milk	No. of producers	Volume of milk
		1,000 lbs		1,000 lbs		1,000 lbs
New York (continued)						
Franklin	90	14,681	89	15,061	87	14,551
Fulton	44	4,570	44	4,822	44	4,240
Genesee	81	31,256	80	31,755	81	30,448
Greene	31	2,064	32	2,244	31	2,066
Herkimer	198	18,690	195	19,768	196	18,933
Jefferson	173	21,406	174	22,930	173	22,259
Lewis	107	13,239	108	14,692	109	14,606
Livingston	41	17,503	43	18,218	43	17,433
Madison	227	27,580	226	29,165	226	27,932
Monroe	19	5,559	20	5,712	20	5,434
Montgomery	234	23,703	233	24,937	229	23,407
Niagara	8	2,803	7	2,836	7	2,725
Oneida	298	33,390	296	35,752	291	34,200
Onondaga	111	30,590	112	32,237	112	31,383
Ontario	89	20,330	89	20,939	90	20,959
Orange	82	9,887	82	10,152	81	9,338
Orleans	21	3,590	21	3,587	21	3,477
Oswego	44	3,047	45	3,221	45	3,161
Otsego	265	20,936	263	22,505	262	21,429
Rensselaer	78	16,325	79	17,219	79	16,464
Saratoga	47	11,234	46	11,291	46	10,866
Schenectady	10	1,132	10	1,158	10	1,111
Schoharie	95	9,267	95	9,800	90	9,294
Schuyler	5	100	5	144	5	139
Seneca	56	6,146	55	6,612	55	6,462
St. Lawrence	343	45,141	343	48,231	337	47,090
Steuben	166	14,783	165	15,924	164	15,169
Sullivan	44	4,385	44	4,542	43	4,127
Tioga	75	9,748	72	10,135	73	9,489
Tompkins	60	11,914	59	12,346	59	11,800
Ulster	5	592	5	604	5	581
Washington	155	28,142	157	29,187	156	27,983
Wayne	69	12,212	69	12,848	69	12,302
Westchester	3	539	3	517	3	445
Wyoming	148	47,240	148	50,772	146	53,536
Yates	136	10,895	138	11,462	137	10,714
All Other**	1	546	1	562	1	523
Total/Average	4,839	708,396	4,830	745,268	4,803	722,107
Pennsylvania						
Adams	52	11,598	52	12,937	58	11,398
Allegheny	10	794	10	935	10	857
Bedford	120	10,250	128	12,171	136	11,931
Berks	242	30,028	235	29,561	233	27,316
Blair	116	24,419	107	21,555	122	18,367
Bradford	300	28,619	301	30,100	303	28,155
Bucks	21	2,608	21	2,586	20	2,384
Cambria	11	1,772	10	1,885	10	1,739
Centre	102	10,622	101	11,375	100	10,564
Chester	319	34,431	320	34,578	315	30,860
Clearfield	8	447	8	474	8	446
Clinton	74	6,015	73	6,540	73	6,111
Columbia	39	4,100	40	4,507	39	4,204
Crawford	6	743	7	792	7	782
Cumberland	200	25,265	206	26,360	206	24,414
Dauphin	75	8,446	75	8,623	75	7,874
Fayette	18	1,040	9	307	19	1,101
Franklin	411	65,807	410	68,893	410	62,229
Fulton	49	5,712	50	6,135	49	5,935
Huntingdon	100	12,356	100	16,262	103	11,477
Indiana	3	234	3	262	3	257
Juniata	125	9,205	126	9,700	130	9,344
Lackawanna	25	1,245	25	1,324	25	1,260

(Continued on following page)

29 **Producer Receipts by State and County*, 2004** (Continued)

State and county	April		May		June	
	No. of producers	Volume of milk 1,000 lbs	No. of producers	Volume of milk 1,000 lbs	No. of producers	Volume of milk 1,000 lbs
Pennsylvania (continued)						
Lancaster	1,920	181,710	1,920	179,953	1,924	162,853
Lebanon	290	39,409	287	39,514	286	36,929
Lehigh	13	1,549	13	1,612	13	1,471
Luzerne	12	917	12	996	12	894
Lycoming	92	7,869	89	8,237	87	7,597
McKean	20	1,200	19	1,237	19	1,137
Mifflin	185	16,915	184	17,672	199	17,913
Montgomery	18	1,868	18	1,771	17	1,542
Montour	35	3,624	35	3,733	35	3,458
Northampton	29	2,785	29	2,853	28	2,640
Northumberland	50	4,785	50	4,934	50	4,548
Perry	109	14,010	109	14,263	109	13,468
Potter	46	7,771	45	8,311	44	7,988
Schuylkill	21	1,704	21	1,753	21	1,587
Snyder	75	5,395	67	4,617	72	5,524
Somerset	75	5,855	74	5,645	72	5,445
Sullivan	22	2,552	22	2,749	22	2,556
Susquehanna	130	12,333	131	12,976	130	11,970
Tioga	177	13,048	175	14,231	173	13,387
Union	141	12,828	134	13,236	138	12,423
Wayne	107	7,048	107	7,637	106	7,300
Wyoming	93	6,931	92	7,245	92	6,754
York	123	12,762	120	12,896	120	11,742
All Other**	17	2,872	17	1,104	16	1,007
Total/Average	6,226	663,496	6,187	677,038	6,239	621,143
Vermont						
Addison	104	26,235	105	27,516	110	27,468
Bennington	13	2,276	13	2,382	12	2,252
Caledonia	102	12,313	103	12,838	102	12,344
Chittenden	32	5,517	32	5,907	38	6,458
Essex	26	4,541	26	4,672	25	4,448
Franklin	264	53,443	261	55,938	258	53,612
Grand Isle	20	3,804	20	3,984	20	3,811
Lamoille	49	5,271	49	5,841	50	5,624
Orange	105	13,058	105	13,592	103	12,851
Orleans	170	27,171	172	28,681	168	27,870
Rutland	70	7,460	68	7,888	68	7,402
Washington	46	6,801	48	7,063	48	6,864
Windham	31	5,368	32	5,619	31	5,357
Windsor	22	2,208	20	2,388	29	3,079
Total/Average	1,054	175,465	1,054	184,308	1,062	179,442
Virginia						
Augusta	16	1,681	11	1,278	9	706
Bedford	3	815	3	899	3	895
Clarke	4	784	4	385	4	664
Franklin	21	2,052	32	2,285	21	1,775
Harrisonburg City	26	3,276	28	2,583	18	2,398
Montgomery	4	319	4	197	4	313
Nottoway	4	946	4	911	4	803
Rockingham	79	12,593	69	10,301	70	9,461
All Other**	40	5,018	36	5,079	35	4,242
Total/Average	197	27,486	191	23,918	168	21,254
Other New England States***	522	80,264	523	83,043	525	79,149
Other States****	126	17,204	130	17,215	126	14,053
Grand Total/Average	14,076	1,830,940	14,019	1,893,758	14,017	1,783,080

* Producer receipts data based on audited producer payroll reports. Totals may not add due to rounding.

** Counties with fewer than 3 producers are restricted and have been consolidated into the "all other" category. Some counties had more than 3 producers, but had fewer than 3 handlers pooling milk during the month.

*** Represents restricted data for the states of Connecticut, Massachusetts, New Hampshire, and Rhode Island.

**** Represents restricted data for the states of Delaware, Kentucky, Michigan, Minnesota, Nevada, Ohio, Utah, West Virginia, and Wisconsin.

29 Producer Receipts by State and County*, 2004 (Continued)

State and county	July		August		September	
	No. of	Volume	No. of	Volume	No. of	Volume
	producers	of milk	producers	of milk	producers	of milk
		1,000 lbs		1,000 lbs		1,000 lbs
Maine						
Androscoggin	36	4,633	36	4,415	35	4,124
Aroostook	11	836	11	728	11	707
Cumberland	16	1,587	16	1,445	16	1,389
Franklin	22	1,167	22	1,119	22	1,088
Kennebec	66	12,405	66	12,138	66	11,557
Knox	8	455	8	481	8	454
Lincoln	11	1,117	11	1,192	11	1,136
Oxford	10	1,059	10	1,054	10	989
Penobscot	64	11,727	63	11,383	62	10,579
Piscataquis	13	1,396	14	1,350	13	1,317
Sagadahoc	6	334	6	307	6	310
Somerset	58	8,934	59	8,714	59	8,308
Waldo	48	5,689	47	5,740	47	5,407
York	16	1,450	16	1,364	16	1,315
All Other**	1	71	1	54	1	54
Total/Average	386	52,860	386	51,484	383	48,735
Maryland						
Baltimore	20	3,647	21	3,440	22	3,452
Caroline	19	2,770	19	2,575	18	2,584
Carroll	122	14,507	119	13,545	118	12,855
Cecil	31	4,328	31	4,176	31	4,094
Charles	3	112	3	109	3	88
Frederick	117	19,326	119	15,395	118	15,123
Garrett	12	619	12	756	12	678
Harford	27	3,883	27	3,728	27	3,532
Kent	24	4,843	24	4,777	24	4,626
Montgomery	7	1,047	7	1,085	7	1,061
Queen Anne's	12	1,656	12	1,640	12	1,640
St. Mary's	23	787	23	740	23	704
Talbot	4	502	4	503	5	496
Washington	149	19,510	149	18,776	146	17,611
All Other**	10	1,390	10	1,445	10	1,332
Total/Average	580	78,925	580	72,685	576	69,875
New Jersey						
Burlington	5	1,970	5	1,820	5	1,737
Cumberland	3	493	3	451	3	437
Gloucester	8	1,699	8	1,695	8	1,657
Hunterdon	9	818	9	775	9	728
Ocean	3	203	3	205	3	189
Salem	24	4,082	24	3,808	24	3,700
Sussex	30	3,138	30	3,064	32	2,994
Warren	34	2,886	33	2,732	33	2,570
All Other**	6	684	6	656	6	643
Total/Average	122	15,973	121	15,208	123	14,654
New York						
Albany	14	1,913	15	1,956	14	1,852
Allegany	116	9,688	115	7,194	115	5,904
Broome	61	10,093	62	9,890	60	9,521
Cattaraugus	110	8,361	133	9,202	134	7,831
Cayuga	149	52,597	151	49,342	149	46,644
Chautauqua	12	732	28	1,909	30	1,897
Chemung	30	3,836	30	3,827	30	3,598
Chenango	260	22,945	260	22,351	256	21,177
Clinton	139	28,870	139	28,466	141	27,300
Columbia	45	11,652	45	11,489	45	11,068
Cortland	148	21,961	148	21,807	148	20,825
Delaware	178	16,014	179	15,562	175	14,873
Dutchess	30	3,517	29	3,458	30	3,350
Erie	73	11,087	74	11,019	74	10,473
Essex	18	2,626	18	2,628	18	2,494

(Continued on following page)

29 **Producer Receipts by State and County*, 2004** (Continued)

State and county	July		August		September	
	No. of	Volume	No. of	Volume	No. of	Volume
	producers	of milk	producers	of milk	producers	of milk
		1,000 lbs		1,000 lbs		1,000 lbs
New York (continued)						
Franklin	177	24,845	176	24,592	175	23,207
Fulton	50	4,747	46	4,826	47	4,745
Genesee	89	31,683	87	21,390	88	18,170
Greene	32	2,023	30	1,920	30	1,805
Herkimer	198	19,168	197	18,769	197	17,769
Jefferson	298	50,085	297	49,615	298	46,473
Lewis	287	39,466	286	38,752	284	36,744
Livingston	71	25,655	71	16,190	70	13,075
Madison	226	28,209	224	27,618	224	26,356
Monroe	21	5,329	21	5,067	21	4,717
Montgomery	235	24,080	233	24,096	233	22,691
Niagara	7	2,699	7	2,629	7	2,518
Oneida	303	34,564	301	33,484	297	31,663
Onondaga	110	31,766	113	31,177	112	29,622
Ontario	105	26,660	105	21,186	105	19,339
Orange	81	9,593	82	9,456	80	8,970
Orleans	21	3,502	21	3,558	21	3,302
Oswego	77	4,971	77	4,734	74	4,508
Otsego	261	21,392	258	20,847	256	19,620
Rensselaer	80	16,769	80	16,624	80	15,813
Saratoga	46	11,495	46	11,393	46	11,013
Schenectady	10	1,170	10	1,081	10	1,054
Schoharie	93	9,451	91	9,225	89	8,664
Schuyler	24	5,476	24	5,364	24	5,083
Seneca	87	9,010	87	8,501	88	8,095
St. Lawrence	351	51,890	348	50,808	347	48,434
Steuben	242	26,292	242	23,489	243	21,796
Sullivan	43	3,946	42	4,009	42	3,834
Tioga	90	11,053	91	11,065	90	10,960
Tompkins	74	13,744	73	13,424	72	12,811
Ulster	5	569	5	563	4	490
Washington	165	28,787	164	28,779	166	27,679
Wayne	73	12,942	73	9,194	72	7,814
Westchester	3	440	3	406	3	405
Wyoming	174	55,642	172	37,411	171	31,298
Yates	207	15,356	206	14,391	204	13,614
All Other**	1	541	1	549	1	517
Total/Average	5,800	870,901	5,815	806,283	5,790	753,473
Pennsylvania						
Adams	56	6,695	56	6,716	56	6,586
Allegheny	10	861	10	875	10	814
Bedford	137	13,502	138	13,677	137	13,188
Berks	257	31,294	256	30,645	258	29,234
Blair	126	18,813	125	18,117	126	17,558
Bradford	362	33,668	361	33,510	359	31,751
Bucks	20	2,422	20	2,314	20	2,246
Cambria	10	1,761	10	1,678	10	1,427
Centre	98	9,667	96	9,371	94	8,705
Chester	313	31,623	313	31,030	312	29,695
Clearfield	8	499	8	478	8	454
Clinton	73	6,117	72	5,887	73	5,610
Columbia	40	4,464	40	4,305	37	4,096
Crawford	7	786	7	814	7	785
Cumberland	206	25,375	206	23,528	206	21,684
Dauphin	76	8,153	75	6,927	74	6,556
Fayette	18	1,071	19	1,077	18	898
Franklin	409	64,026	408	61,028	410	57,824
Fulton	49	5,890	49	6,031	49	5,772
Huntingdon	101	11,603	100	11,092	100	10,656
Indiana	3	254	3	260	3	237
Juniata	129	9,529	129	9,265	128	8,655
Lackawanna	25	1,268	25	1,213	26	1,193

(Continued on following page)

29 **Producer Receipts by State and County*, 2004** (Continued)

State and county	July		August		September	
	No. of producers	Volume of milk	No. of producers	Volume of milk	No. of producers	Volume of milk
		1,000 lbs		1,000 lbs		1,000 lbs
Pennsylvania (continued)						
Lancaster	1,917	166,627	1,913	158,773	1,912	152,692
Lebanon	288	38,261	287	37,065	286	35,523
Lehigh	14	1,947	14	1,886	14	1,782
Luzerne	12	854	12	892	12	802
Lycoming	86	7,572	87	7,111	84	6,676
McKean	19	1,082	18	1,060	18	1,088
Mifflin	196	18,394	196	17,616	196	16,872
Montgomery	17	1,509	17	1,553	17	1,499
Montour	36	3,641	36	3,512	35	3,201
Northampton	28	2,755	28	2,665	28	2,565
Northumberland	53	4,761	53	4,733	54	4,563
Perry	109	13,830	109	13,132	110	12,568
Potter	44	7,970	45	7,580	43	7,226
Schuylkill	22	1,608	22	1,678	22	1,563
Snyder	72	5,636	72	5,520	72	5,254
Somerset	72	5,946	94	6,652	76	5,732
Sullivan	22	2,567	22	2,605	22	2,421
Susquehanna	145	12,425	143	12,166	142	11,531
Tioga	177	13,593	176	12,959	175	12,132
Union	138	12,662	138	12,332	136	11,803
Wayne	105	7,251	106	6,959	104	6,551
Wyoming	95	7,052	94	6,788	93	6,367
York	120	11,943	121	11,482	120	11,009
All Other**	15	948	18	1,075	11	749
Total/Average	6,335	640,178	6,347	617,633	6,303	587,791
Vermont						
Addison	209	53,307	209	52,424	209	49,927
Bennington	12	2,141	12	2,050	12	1,960
Caledonia	102	12,539	103	12,355	104	11,854
Chittenden	62	9,309	62	9,090	60	8,675
Essex	25	4,549	25	4,356	25	4,211
Franklin	271	59,945	270	58,637	272	55,335
Grand Isle	21	4,409	22	4,314	22	4,110
Lamoille	50	5,740	50	5,839	49	5,533
Orange	111	13,435	110	13,165	110	12,784
Orleans	165	28,395	163	27,872	163	26,367
Rutland	102	9,996	103	9,612	104	9,261
Washington	47	6,997	47	6,651	47	6,190
Windham	31	5,305	31	5,165	32	5,023
Windsor	40	3,798	40	3,690	41	3,569
Total/Average	1,248	219,866	1,247	215,221	1,250	204,800
Virginia						
Augusta	10	1,488	10	1,417	11	1,508
Bedford	3	764	3	867	4	822
Clarke	4	760	3	243	3	293
Franklin	21	1,711	18	1,495	19	1,273
Harrisonburg City	16	1,654	11	1,629	11	1,584
Montgomery	4	298	4	354	4	171
Nottoway	4	682	3	682	3	622
Rockingham	93	10,544	80	10,271	75	9,585
All Other**	47	5,381	34	4,008	46	5,639
Total/Average	202	23,281	166	20,966	176	21,495
Other New England States***	527	79,911	523	77,720	523	73,814
Other States****	126	13,738	125	13,347	114	12,975
Grand Total/Average	15,326	1,995,632	15,310	1,890,550	15,238	1,787,610

* Producer receipts data based on audited producer payroll reports. Totals may not add due to rounding.

** Counties with fewer than 3 producers are restricted and have been consolidated into the "all other" category. Some counties had more than 3 producers, but had fewer than 3 handlers pooling milk during the month.

*** Represents restricted data for the states of Connecticut, Massachusetts, New Hampshire, and Rhode Island.

**** Represents restricted data for the states of Delaware, Kentucky, Michigan, Minnesota, Nevada, Ohio, Utah, West Virginia, and Wisconsin.

29 **Producer Receipts by State and County*, 2004** (Continued)

State and county	October		November		December		Annual	
	No. of	Volume	No. of	Volume	No. of	Volume	No. of	Volume
	producers	of milk 1,000 lbs	producers	of milk 1,000 lbs	producers	of milk 1,000 lbs	producers	of milk 1,000 lbs
Maine								
Androscoggin	35	4,160	34	4,004	34	4,309	36	53,906
Aroostook	11	749	11	675	11	671	11	8,963
Cumberland	17	1,427	17	1,317	17	1,375	16	17,844
Franklin	21	1,063	21	994	22	1,100	22	12,874
Kennebec	67	11,662	65	10,920	64	10,848	66	137,291
Knox	8	445	8	414	8	445	8	5,266
Lincoln	11	1,132	11	1,071	10	1,144	11	13,533
Oxford	10	1,030	10	973	10	1,020	11	12,938
Penobscot	62	10,765	63	10,455	63	11,180	64	132,969
Piscataquis	12	1,303	12	1,376	12	1,507	14	16,886
Sagadahoc	6	327	6	303	6	304	6	3,748
Somerset	59	8,344	58	7,999	56	8,548	59	103,463
Waldo	47	5,451	47	5,177	46	5,383	48	64,411
York	16	1,310	16	1,174	16	1,182	16	15,080
All Other**	1	61	1	56	1	63	1	683
Total/Average	383	49,228	380	46,908	376	49,079	386	599,855
Maryland								
Baltimore	20	3,602	21	3,558	20	3,663	21	46,632
Caroline	18	2,731	18	2,662	19	2,759	19	38,380
Carroll	116	13,259	116	13,189	116	14,139	122	177,204
Cecil	31	4,301	31	4,273	31	4,600	32	53,296
Charles	3	100	3	88	3	124	3	1,428
Frederick	117	15,492	114	16,068	114	18,158	116	221,206
Garrett	12	671	12	672	12	694	12	9,079
Harford	27	3,697	26	3,711	25	4,053	27	47,125
Kent	24	4,919	24	4,897	24	4,984	25	68,312
Montgomery	7	1,090	7	1,052	7	1,131	7	12,830
Queen Anne's	12	1,754	12	1,821	12	2,027	13	21,916
St. Mary's	23	741	23	764	23	801	23	9,574
Talbot	5	584	5	616	5	694	4	6,877
Washington	146	19,092	147	18,951	148	19,996	150	238,052
All Other**	10	1,420	10	1,438	10	1,517	10	17,771
Total/Average	571	73,454	569	73,761	569	79,341	584	969,682
New Jersey								
Burlington	5	1,586	4	1,275	4	1,450	5	22,156
Cumberland	3	446	3	446	3	506	3	5,809
Gloucester	8	1,810	8	1,845	8	1,929	8	20,850
Hunterdon	9	719	9	677	9	691	9	9,383
Ocean	3	183	3	174	3	164	3	2,303
Salem	24	3,875	24	3,796	23	4,086	24	48,886
Sussex	32	3,064	32	2,889	32	3,036	31	37,047
Warren	33	2,602	32	2,450	32	2,543	35	34,260
All Other**	6	631	6	607	6	660	7	8,753
Total/Average	123	14,916	121	14,158	120	15,065	125	189,447
New York								
Albany	14	1,829	14	1,717	14	1,788	14	21,960
Allegany	117	6,160	116	5,935	116	6,242	103	85,386
Broome	60	9,734	61	9,583	63	10,286	61	119,069
Cattaraugus	132	7,985	101	5,180	100	5,246	107	86,868
Cayuga	147	48,118	147	46,801	145	50,286	150	600,353
Chautauqua	30	1,984	15	900	15	929	22	22,933
Chemung	30	3,599	29	3,424	30	3,733	24	34,885
Chenango	255	21,217	250	19,945	254	20,920	261	263,009
Clinton	140	27,728	138	26,557	137	28,046	122	283,361
Columbia	45	11,248	46	10,734	46	11,463	46	136,269
Cortland	148	21,304	149	20,379	150	21,454	149	258,612
Delaware	176	15,208	172	14,471	173	15,501	176	190,541
Dutchess	30	3,554	30	3,509	28	3,762	29	42,451
Erie	73	10,739	71	10,295	73	11,140	71	130,369
Essex	18	2,585	18	2,593	18	2,741	15	25,179

(Continued on following page)

29 Producer Receipts by State and County*, 2004 (Continued)

State and county	October		November		December		Annual	
	No. of	Volume	No. of	Volume	No. of	Volume	No. of	Volume
	producers	of milk 1,000 lbs	producers	of milk 1,000 lbs	producers	of milk 1,000 lbs	producers	of milk 1,000 lbs
New York (continued)								
Franklin	175	23,502	174	22,175	171	23,186	155	256,753
Fulton	46	4,837	47	4,260	47	4,462	46	55,726
Genesee	88	18,283	85	17,818	87	24,254	87	319,791
Greene	31	1,848	31	1,762	29	1,931	31	23,779
Herkimer	200	18,350	197	16,750	194	17,706	198	220,083
Jefferson	292	47,416	288	45,190	283	47,866	265	492,614
Lewis	283	37,331	284	35,332	285	37,069	243	373,189
Livingston	70	13,335	71	12,617	71	13,677	64	223,485
Madison	223	27,171	225	25,944	223	27,237	227	330,325
Monroe	21	5,058	21	4,796	20	5,200	20	63,513
Montgomery	230	23,061	230	21,936	230	23,213	232	278,347
Niagara	7	2,719	7	2,589	7	2,654	7	32,238
Oneida	299	32,171	297	29,891	294	31,732	301	395,471
Onondaga	111	30,529	109	29,362	107	31,017	111	367,326
Ontario	103	19,868	104	19,098	104	20,365	101	267,496
Orange	80	9,281	79	9,030	79	9,640	82	114,954
Orleans	20	3,371	20	3,153	20	3,211	21	41,604
Oswego	74	4,578	75	4,242	74	4,360	67	50,445
Otsego	262	20,189	251	18,839	251	19,757	261	246,934
Rensselaer	80	16,231	81	15,649	82	16,935	79	195,891
Saratoga	46	11,504	45	11,107	45	11,989	46	134,968
Schenectady	10	1,094	10	1,027	10	1,048	10	13,183
Schoharie	89	8,942	91	8,518	91	8,932	92	109,700
Schuyler	23	5,239	23	4,962	23	5,236	19	47,042
Seneca	87	8,234	88	7,853	87	8,216	79	94,689
St. Lawrence	348	49,266	344	46,607	340	49,278	349	576,020
Steuben	240	22,140	241	21,098	242	22,478	223	258,252
Sullivan	42	3,922	42	3,721	42	3,947	43	49,139
Tioga	89	11,557	88	11,146	88	11,798	85	132,672
Tompkins	71	13,211	73	12,977	73	13,974	70	157,565
Ulster	4	500	5	546	5	589	5	6,881
Washington	166	28,612	173	28,031	165	29,929	165	343,859
Wayne	71	7,938	71	7,265	72	7,628	71	127,323
Westchester	3	428	3	448	3	523	3	5,716
Wyoming	174	30,946	170	30,179	171	32,423	168	521,071
Yates	204	14,018	204	13,429	204	14,100	190	163,147
All Other**	1	513	1	492	1	538	1	6,304
Total/Average	5,778	770,186	5,705	731,862	5,682	781,636	5,569	9,398,739
Pennsylvania								
Adams	56	7,034	58	7,012	56	7,366	55	104,873
Allegheny	10	756	10	752	10	787	10	9,709
Bedford	136	12,975	137	13,145	137	13,601	134	151,718
Berks	261	30,730	264	30,449	262	32,803	257	374,223
Blair	123	17,075	127	17,445	123	17,816	123	238,902
Bradford	357	32,205	358	30,983	358	33,207	347	381,831
Bucks	19	2,372	19	2,314	18	2,529	20	29,738
Cambria	9	1,702	9	1,643	9	1,757	10	20,691
Centre	94	8,709	97	8,591	95	9,013	99	114,688
Chester	311	30,769	310	30,670	309	32,783	317	387,164
Clearfield	8	456	7	422	7	432	8	5,502
Clinton	73	5,692	73	5,537	73	5,842	77	73,473
Columbia	37	4,175	37	4,059	37	4,253	41	49,783
Crawford	7	814	7	854	7	888	7	9,502
Cumberland	202	19,714	200	19,907	199	24,343	204	283,734
Dauphin	73	6,551	73	6,547	74	6,951	76	90,724
Fayette	18	973	17	887	17	970	18	11,682
Franklin	408	58,525	405	58,205	405	63,409	410	752,310
Fulton	49	6,054	49	5,825	49	6,085	49	70,452
Huntingdon	98	10,827	100	10,693	95	11,406	100	151,701
Indiana	3	224	3	203	3	223	3	2,865
Juniata	126	8,970	128	8,544	127	9,288	127	110,235
Lackawanna	26	1,271	26	1,240	26	1,271	26	15,170

(Continued on following page)

29 **Producer Receipts by State and County*, 2004** (Continued)

State and county	October		November		December		Annual	
	No. of	Volume	No. of	Volume	No. of	Volume	No. of	Volume
	producers	of milk 1,000 lbs	producers	of milk 1,000 lbs	producers	of milk 1,000 lbs	producers	of milk 1,000 lbs
Pennsylvania (continued)								
Lancaster	1,907	158,444	1,909	157,889	1,902	170,457	1,921	2,014,635
Lebanon	284	37,039	286	35,891	284	38,110	288	455,955
Lehigh	14	1,777	14	1,772	14	1,940	14	21,598
Luzerne	11	806	11	766	11	838	12	10,312
Lycoming	83	6,833	85	6,476	84	6,622	89	86,970
McKean	18	1,139	18	1,057	18	1,105	19	13,587
Mifflin	195	17,102	195	16,765	193	17,661	194	208,784
Montgomery	17	1,544	16	1,523	16	1,710	17	20,081
Montour	34	3,231	34	3,123	35	3,306	35	41,330
Northampton	28	2,640	28	2,597	28	2,737	29	32,793
Northumberland	54	4,785	54	4,733	54	5,011	53	57,282
Perry	110	13,288	109	12,954	109	13,756	110	162,700
Potter	43	7,499	43	7,470	43	8,269	45	93,500
Schuylkill	21	1,605	21	1,636	21	1,835	21	19,940
Snyder	72	5,547	72	5,356	71	5,659	73	65,693
Somerset	75	6,033	77	6,017	77	5,888	76	71,969
Sullivan	22	2,450	22	2,420	22	2,578	22	30,393
Susquehanna	141	11,644	142	11,111	140	12,034	142	145,674
Tioga	173	12,172	170	11,159	172	11,775	176	151,504
Union	136	12,255	137	12,054	136	12,839	140	149,811
Wayne	104	6,823	106	6,498	106	6,864	108	83,264
Wyoming	91	6,483	91	6,161	91	6,431	95	80,849
York	119	11,306	118	11,247	120	11,989	122	143,960
All Other**	11	818	10	745	14	886	16	19,103
Total/Average	6,267	601,834	6,282	593,348	6,257	637,323	6,337	7,622,359
Vermont								
Addison	207	51,529	206	50,147	203	53,869	183	553,603
Bennington	12	1,953	12	1,885	12	2,098	12	26,178
Caledonia	104	12,173	104	11,670	104	12,331	103	147,790
Chittenden	61	8,765	61	8,470	62	9,029	55	97,710
Essex	25	4,332	25	4,148	25	4,482	25	53,503
Franklin	271	56,518	271	54,211	269	57,013	271	679,655
Grand Isle	22	4,119	22	3,853	21	4,031	21	48,950
Lamoille	49	5,472	48	5,164	48	5,281	49	65,219
Orange	110	13,174	109	12,790	108	13,767	109	158,943
Orleans	161	26,697	164	25,796	161	27,486	167	327,384
Rutland	103	9,422	103	9,085	101	9,910	95	111,444
Washington	46	6,304	46	6,120	46	6,593	47	79,977
Windham	31	5,304	31	5,188	33	5,541	31	64,101
Windsor	41	3,605	40	3,438	39	3,693	37	40,713
Total/Average	1,243	209,365	1,242	201,966	1,232	215,124	1,206	2,455,170
Virginia								
Augusta	10	1,547	9	1,213	9	1,230	11	16,517
Bedford	4	1,082	4	1,064	4	995	3	10,869
Clarke	4	430	4	460	4	466	4	6,873
Franklin	21	1,469	17	1,431	21	1,354	21	21,337
Harrisonburg City	11	1,452	12	1,783	12	1,917	18	25,517
Montgomery	4	245	4	306	4	445	4	3,235
Nottoway	3	663	3	672	3	740	4	9,383
Rockingham	71	9,136	69	9,147	72	9,690	75	121,139
All Other**	42	5,314	38	4,880	38	4,985	38	58,790
Total/Average	170	21,338	160	20,954	167	21,821	195	273,662
Other New England States***	518	75,721	514	73,772	511	78,979	525	944,444
Other States****	124	13,354	127	13,431	157	15,384	218	205,397
Grand Total/Average	15,177	1,829,399	15,100	1,770,158	15,071	1,893,751	15,144	22,658,756

* Producer receipts data based on audited producer payroll reports. Totals may not add due to rounding.

** Counties with fewer than 3 producers are restricted and have been consolidated into the "all other" category. Some counties had more than 3 producers, but had fewer than 3 handlers pooling milk during the month.

*** Represents restricted data for the states of Connecticut, Massachusetts, New Hampshire, and Rhode Island.

**** Represents restricted data for the states of Delaware, Kentucky, Michigan, Minnesota, Nevada, Ohio, Utah, West Virginia, and Wisconsin.

Bulletin Highlights—2004

January

The USDA extended the time period from January 30 to September 30, 2004, for interested parties to submit additional proposals for consideration of a hearing to amend the fluid milk product definition in all federal milk marketing orders.

Higher prices for block Cheddar, barrel cheese, and butter on the Chicago Mercantile Exchange (CME) and their effect on milk prices were discussed. Charts illustrated CME block Cheddar and butter prices from 2002 to the beginning of 2004.

The average producer butterfat, protein, and other solids levels in 2003 were compared for selected states/areas and shown in a table.

A map showed the average daily deliveries per producer (DDP) by county that was pooled in the Northeast Milk Marketing Area during 2003.

February

A referendum was conducted on a tentative final decision that would adopt proposals to change the product classification of milk used to produce evaporated milk or sweetened condensed milk in consumer-type packages from Class III to Class IV. The amendment applied to all ten federal milk marketing orders, and the referendum concluded on March 18.

Changes in the Northeast Order that resulted from farm exits, handler pooling changes, and other production related factors were discussed. A table gave selected statistics for the month of January 2000 vs. January 2004.

The factors that stunted the total U.S. milk production during 2003 were discussed, and a table showed the top ten states ranked by milk production.

The cause-and-effect relationship between U.S. milk production and the average uniform price was explained, and a graph presented the year-to-year percentage change for the years 1997–2004.

The Market Administrator's bulk tank verification program was explained, and a tentative schedule was given for 2004.

March

A negative value for the producer price differential (PPD) at all zones was expected to be included in the April calculation of the statistical uniform price (SUP). An explanation was given as to how a negative PPD could occur.

Federal order Class I prices were expected to hit record highs. The dramatic increases in commodity prices were given as the reason, and a table showed the actual and estimated dairy product prices used in the April 2004 class price calculation.

Milk prices strengthened because of the increasing demand for milk since 2003; demand recovery was expected to continue in 2004. A table showed the commercial disappearance, total milk, and selected dairy products for 2003 and 2004.

A pool summary for all federal orders was given in a table for January–March, 2003–2004.

April

The PPD was negative at all zones. The situation occurred because the combined value of producer milk components exceeded the total value of the Northeast Order pool. This was reflected in the table on the computation of producer price differential and statistical uniform price.

The operation of dairy cooperatives was discussed, and a table showed the dairy plants owned and operated by cooperatives performing various functions for the years 1997 and 2002.

USDA's National Agricultural Statistics Service (NASS) released their *Dairy Products Annual for 2003*. A chart illustrated the whole milk equivalents used in manufactured products.

May

USDA extended the comment deadline on the proposal to exempt producers and marketers of solely 100 percent organic products from paying commodity promotion assessments to June 25, 2004.

The categories of U.S. dairy exports were explained, along with their impact on dairy prices. A table listed the metric tons of dairy export products for 2003 and the percent change from 2002.

The market situation for butter and block Cheddar cheese prices at the Chicago Mercantile Exchange (CME) was discussed and illustrated in a chart for mid-February through mid-June, 2004.

The top ten contributing counties in terms of producer milk receipts pooled on the Northeast Order for 2003 were given. A map depicted the top ten ranked supply counties and included selected statistics for 2003.

June

The market prices for butter and block Cheddar cheese at the CME peaked as demand softened. Charts illustrated the weekly prices from January 2003 to July 2004.

The results from the November 2003 container sales survey for the Northeast Milk Marketing Area were released. Charts illustrated the sales by product type and container size.

A pool summary for all federal orders was given in a table for January–June, 2003–2004.

(Continued on following page)

Bulletin Highlights—2004 *(Continued)*

July

The utilization of milk pooled under Order No. 1 was discussed. A table depicted the utilization in million pounds by class and selected products for January–June with the percent change from 2003 to 2004.

The volume of milk receipts in the Northeast Marketing Area was highlighted, and charts illustrated the contributions to the pool by state for 2003 and from January to June 2004.

The prices and levels of milk components were given for the first 7 months of 2004. Charts showed tests for butterfat, protein, and other solids for 2003, 2004 and the 4-year average, and for component prices for butterfat and protein for January 2003 through July 2004.

August

Dana Coale was selected as the new deputy administrator of USDA's Agricultural Marketing Service Dairy Programs; she replaced Richard McKee who retired in April 2004.

A review of how class prices are calculated by the USDA based on competitive market surveys by NASS of certain wholesale dairy commodities was given, and the influence of the CME was explained. Two examples of NASS weekly reports of dairy product prices were illustrated in charts.

Total milk production in the United States during July 2004 grew over the previous year in the top 20 states. A table showed the total U.S. milk production vs. the uniform price from January 2003 to July 2004.

Bulk milk movements by handlers pooled on the Northeast Order that were shipped to and received from handlers pooled on other federal orders during August were discussed.

September

The USDA announced a final decision that reclassified milk used to produce evaporated milk or sweetened condensed milk in consumer-type packages from Class III to Class IV. A tentative final decision on these same amendments was voted on and approved by producers in March 2004; because of the urgency of this issue, the classification change was done on a temporary basis and implemented effective May 1, 2004. The referendum ended on October 15, 2004. A chart illustrated the decision process for the amendment to the classification of milk provisions.

Bulk milk shipments to other federal orders in the South increased, and there were more shipments than receipts.

The deadline for submitting proposals for consideration on an amendment to the fluid milk product definition in all federal milk marketing orders was extended from September 30, 2004, to January 31, 2005.

The Commodity Credit Corporation (CCC) purchases were down from last year and only nonfat dry milk (NFDM) was purchased under the support program. A table showed CCC dairy product purchases from 1991 through 2004.

A pool summary for all federal orders was given in a table for January–September, 2003–2004.

October

Milk receipts in the combined states of New York, Pennsylvania, and Vermont declined during the months of August–October 2004; however, total U.S. milk production increased during the same period.

The 2004 Northeast Regional Dairy Outlook Conference was held November 9. A table showed the uniform prices for 2003, the actual and estimated prices for 2004, and the estimated prices for 2005.

The USDA sought nominations for the National Fluid Milk Processor Promotion Board.

Farms that marketed at least 1.5 million pounds of milk during September 2004 in the Northeast Order were discussed; a table showed milk by state and farm size.

Market signals remained mixed as the CME's AA Butter and 40-lb block Cheddar cheese prices increased. A chart illustrated the weekly CME butter and cheese prices from June to November 2004.

November

A calendar was given for 2005 that showed the payment dates for partial and final payments to producers who are not members of cooperatives.

Annual average producer butterfat tests by county for 2003 were discussed and illustrated in a map.

Cheese and butter prices dropped on the CME, and charts illustrated the weekly average CME prices for block Cheddar and AA Butter from July to December 2003 and 2004.

The final rule permanently adopted classification of milk use provisions in all ten federal milk markets, effective December 1, 2004. Milk used to produce evaporated milk in consumer-type packages or sweetened condensed milk in consumer-type packages was reclassified from Class III to Class IV. The amendments were previously approved and implemented on an interim basis, effective May 1, 2004.

December

The Northeast Order's statistics for 2004 were summarized, and a table showed the pool statistics for 2003 and 2004.

Annual average producer protein tests by county for 2003 were discussed and illustrated in a map.

A pool summary for all federal orders was given in a table for 2003 and 2004.

Market Administrator Northeast Marketing Area Administration Fund

INCOME AND EXPENSE STATEMENT For the Year Ended December 31, 2004

	Administrative Fund	Marketing Service Fund
INCOME		
Assessments or Deductions	\$ 10,264,216.48	\$ 2,669,782.28
Late-Payment Charges		
Assessed	385,244.42	0.00
Interest Earned	11,985.89	717.73
Miscellaneous	18,678.86	0.00
TOTAL INCOME	\$ 10,680,125.65	\$ 2,670,500.01
EXPENSES		
Salaries & Services	\$ 5,451,628.98	\$ 1,673,885.30
Travel	524,573.66	123,970.62
Communications	320,006.51	62,190.19
Employer Payroll Contributions	1,240,996.91	424,164.89
Insurance	31,207.98	13,589.16
Rent—Buildings & Equipment	708,732.19	22,410.80
Repairs & Maintenance	339,999.67	9,256.43
Supplies	231,148.03	89,668.62
Testing & Weighing	0.00	225,768.70
Utilities	37,407.50	6,757.84
Depreciation of Fixed Assets	278,917.88	91,095.46
Conferences & Meetings	46,278.30	512.78
Training	71,334.25	1,295.00
Uncollectible Accounts	2,036.55	0.00
Miscellaneous	78,294.33	1,221.79
TOTAL EXPENSES	\$ 9,362,562.74	\$ 2,745,787.58
NET SURPLUS/(Deficit)	\$ 1,317,562.91	\$ (75,287.57)

BALANCE SHEET As of December 31, 2004

	Administrative Fund	Marketing Service Fund
ASSETS		
Current Assets:		
Cash	\$ 2,438,706.94	\$ 314,594.20
Investments	2,000,000.00	0.00
Accounts Receivable:		
Handlers	\$ 1,225,158.84	\$ 253,716.80
Other	10,179.89	14,563.09
Allowance for Uncollectible Accounts	0.00	0.00
Accrued Interest Receivable	950.00	0.00
Other Assets:		
Prepaid Expenses	\$ 147,453.15	\$ 11,360.52
Deposits	12,336.58	912.24
Fixed Assets:		
Motor Vehicles	\$ 23,583.61	\$ 199,240.00
Accumulated Depreciation	(9,267.84)	(140,439.39)
Furniture & Equipment	1,631,150.70	160,686.00
Accumulated Depreciation	(1,307,103.64)	(154,595.87)
Laboratory Equipment	0.00	205,815.12
Accumulated Depreciation	0.00	(132,979.82)
Leasehold Improvements	353,994.96	85,905.30
Accumulated Depreciation	(189,907.99)	(20,565.89)
TOTAL ASSETS	\$ 6,337,235.20	\$ 798,212.30
LIABILITIES		
Current Liabilities:		
Accounts Payable		
Handlers	\$ 218.19	\$ 121.14
Trade Creditors	71,890.31	30,244.93
Other	0.00	0.00
Accrued Employee Salaries	78,607.04	49,261.35
Accrued Employee Annual Leave	482,829.37	67,344.48
Payroll Contr. & Withholdings	22,382.16	12,492.44
Other Liabilities:		
Miscellaneous	0.00	0.00
Operating Balance	5,681,308.13	638,747.96
TOTAL LIABILITIES & OPERATING BALANCE	\$ 6,337,235.20	\$ 798,212.30

USDA Equal Opportunity Policy

The U.S. Department of Agriculture (USDA) prohibits discrimination in all its programs and activities on the basis of race, color, national origin, gender, religion, age, disability, political beliefs, sexual orientation, or marital or family status. (Not all prohibited bases apply to all programs.) Persons with disabilities who require alternative means for communication of program information (Braille, large print, audiotape, etc.) should contact USDA's TARGET Center at (202) 720-2600 (voice and TDD).

To file a complaint of discrimination, write USDA, Director, Office of Civil Rights, Room 326-W, Whitten Building, 1400 Independence Avenue, SW, Washington, DC 20250-9410 or call (202) 720-5964 (voice or TDD). USDA is an equal opportunity provider and employer.



MARKET ADMINISTRATOR
One Columbia Circle
Albany, NY 12203-6379

RETURN SERVICE REQUESTED

PRSRT STD
US POSTAGE
PAID
ALEXANDRIA, VA
Permit #355